

THE POULTRY YARD.

THE MALAY COCK.

GENERAL CHARACTERISTICS.

The body smaller than that of the Cochon; form more erect than of any other variety; flesh ordinary, hard, and dense; feathers long and straight, lying close on the body; thighs, shanks, and feet strong and long; shoulders projecting; tail slender and short; comb triple and very thick; skin red; beak and feet yellow.

Weight.—Eleven pounds.

Height.—Twenty-nine inches and a half from the head to under the feet.

Body.—Conical, large in front, and becoming gradually smaller to behind, where it becomes pointed. This shape and the plumage is so slippery and close-fitting on the bird that it is difficult to hold it. The body is much inclined from before to the tail, and the arched back forms an angle of 45° . The thighs and shanks are long, strong, and thick. There is no variety that has so much flesh on the breast and pinions. The wings are placed very high and very close to the sides, which makes the shoulders very large.

Head.—Strong, short, and conical, flattened on the skull, and wide between the eyes. The red fleshy part which envelopes the whole head is very apparent.

Comb.—Thick in a single lump, yet one of the triple combs covering the base of the beak and extending to the middle of the skull.

Wattles.—Middle-sized.

Ears.—Proportioned to the length of the wattles.

Checks.—Large, bare, and red.

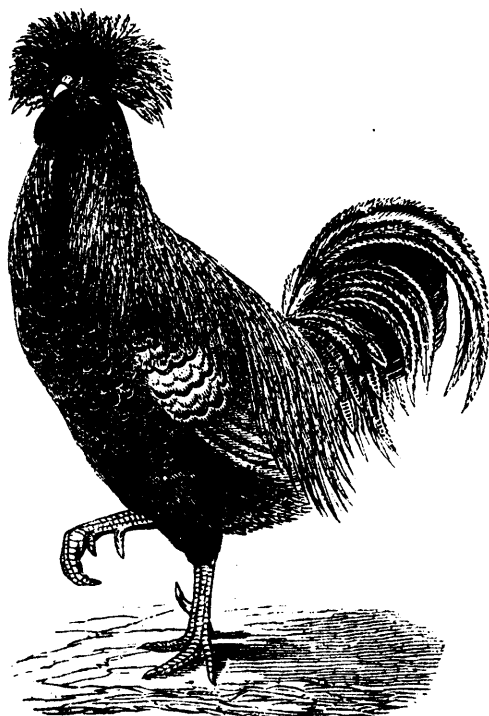
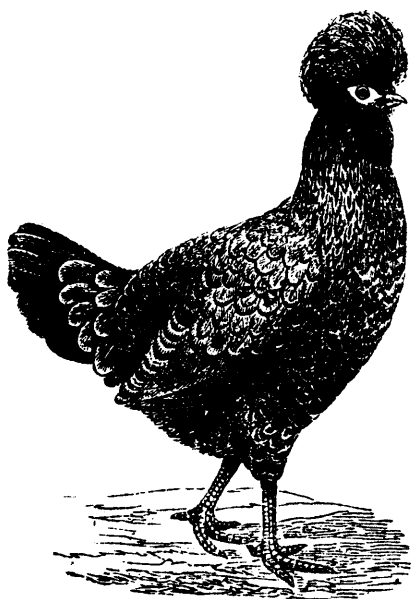
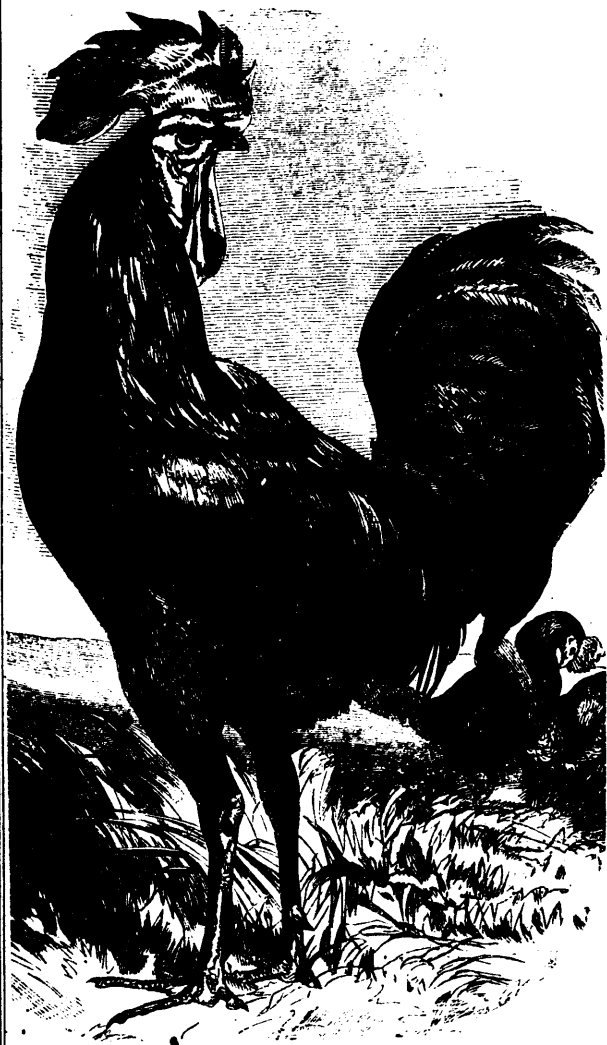
Beak.—Short and conical, very strong, bent down, and clear yellow.

Eye.—Malicious, having the expression of that of an eagle; iris rosy yellow; pupil very dark; eye covered by an eyelid so much developed that when seen in front the eye is not visible. The bird's look is always savage and menacing.

Shank of Leg.—Very long and very strong, of a bright yellow colour.

Toes.—Strong, long, and well clawed, of the same colour as the leg.

(Continued on page 286.)



PADUAS OR POLANDS.