

# McCormick Turbines

State your Requirements - and send for Catalogue



Estimates furnished for Complete Power Plants, and Results Guaranteed

Represents a pair of 30-inch McCormick Turbines, with Governor and Fly-Wheel for regulating speed. The Turbine Shaft is direct-connected to a 750 k.w. Generator.

Four Outfits like this, developing 5,000 h.p., and one pair of 51 inch of 1,450 h.p., furnished the Sacramento Electric, Gas & Railway Co., Colusa, Cal. Power is transmitted 22 miles.

**S. MORGAN SMITH CO. - YORK, PA., U.S.A.**

For those wishing to do business in the electrical field an advertisement in the CANADIAN ELECTRICAL NEWS is a paying investment. Write for terms for this desirable space to C. H. MORTIMER, Publisher, Confederation Life Building, Toronto.

## VICTORIA FOSSIL MEAL COVERING



You are losing money if you have not your Boilers and Pipes covered. When covering, USE THE BEST! We claim, and Users say, this is our Prepared Fossil Meal. One inch thickness only required. Very Light, Adhesive, Easily Applied, and can be used over and over again. Locates a leak instantly. Applied to Elbows as easily as to a Straight Pipe. PRICE, \$3.00 PER 100 LBS., WHICH COVERS 50 SQ. FEET.

Good References on Application.

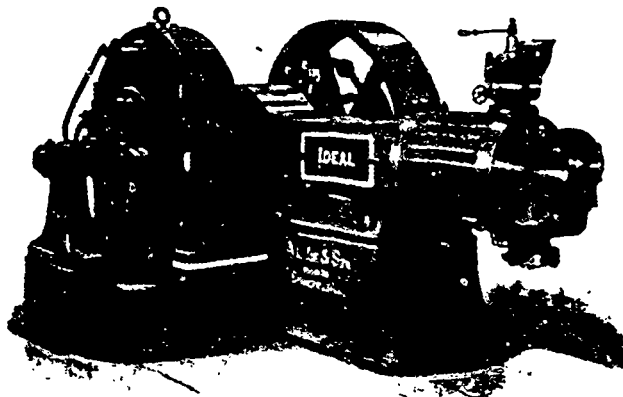
*Crude Infusorial Earth for filling in Walls, Etc., as a Non-Conductor of Sound*

**VICTORIA TRIPOLITE COMPANY, Limited - North Sydney, Nova Scotia**

# THE Goldie & McCulloch Co. LIMITED

MANUFACTURERS OF

**IMPROVED STEAM ENGINES AND BOILERS**



Flouring Mills, And the Location of Same in the Most Complete Style of Modern Improvement.

Wool Machinery, Wood-Working Machinery, Saw Mill, Shingle and Stave Machinery, Fire and Burglar-Proof Safes and Vault Doors.

THE "IDEAL" HIGH SPEED ENGINE, DIRECT-CONNECTED.

SPECIAL ATTENTION called to the "WHEBLOCK" IMPROVED STEAM ENGINE, also the "IDEAL" HIGH SPEED ENGINE, cut of which appears above, as being Unequaled for Simplicity, Efficiency and Economy in Working, and Especially Adapted for Electric Lighting, Street Railways, Etc.

† GALT, ONT.