

Knott & Sangster

ROOM 101, MASONIC TEMPLE, PHONE 650.

GRAND TRUNK PACIFIC TOWN LOTS. WAINWRIGHT—A LARGE NUMBER OF LOTS HAVE BEEN SOLD IN THE LAST WEEK. A LONDON SYNDICATE HAS PURCHASED ONE HUNDRED LOTS, AND PAID IN THE NEIGHBOURHOOD OF \$15,000. THESE LOTS WILL NOT LAST LONG.

WATROUS, MELVILLE, BIGGAR, TOFIELD, ARE OTHER GOOD TOWNS. ALL DIVISIONAL POINTS, AND ALL THE LOTS WE HAVE FOR SALE ARE FOR THE GRAND TRUNK PACIFIC RAILWAY. WE ARE SOLE AGENTS FOR LONDON FOR THESE LOTS. OTHER PARTIES ARE OFFERING LOTS FURTHER OUT. CALL AND GET PARTICULARS OF BONAFIDE GRAND TRUNK PACIFIC RAILWAY TOWN LOTS. YOU CAN BUY A LOT BY PAYING ONE-TENTH DOWN, AND BALANCE IN NINE MONTHLY PAYMENTS. NO TAXES UNTIL 1912, AND NO INTEREST ON DEFERRED PAYMENTS.

DUNDAS STREET—1½-story brick, 3 bedrooms, modern conveniences, lot 60x315 feet. Price, \$3,200.

DEAN STREET—Frame cottage, brick foundation, 2 bedrooms, cellar, chicken coop, fruit and shade trees, lot 48x129.6 feet. Price, \$1,400.

2-2½ acres Pipe Line near Wonderland, frame cottage, stone foundation, barn, poultry house, hog pen, etc., good poultry farm. Price, \$1,200. Would exchange for 40 or 50 acres.

GROSVENOR STREET—1½-story brick, 3 bedrooms, bath and w.c., furnace, lot 32x140 feet. Price, \$2,600.

SOUTH LONDON—1½-story brick, veneer, cement block foundation, 2 bedrooms, room for bath, gas and electric light, lot 40x156 feet. Call for particulars.

FOR SALE OR TO LET—Bridport street, 2½-story red pressed brick, cement block foundation, modern conveniences, mantel and grate; lot 42x140 feet. Call for particulars.

150 ACRES—Brick cottage, 4 bedrooms, parlor, dining-room, kitchen, pantry, cellar, furnace, new bank barn, stone stables under, arched floor, drive, barn, good well and windmill, clay loam. Will exchange for small farm or city property.

PROSPERITY AVENUE—Two-story brick, 4 bedrooms and den, modern conveniences, lot 46x140 feet. Call for particulars.

BEACONSFIELD AVENUE—2½-story brick, cement block foundation, 4 bedrooms, kitchen cupboard, laundry with stationary tubs, lot 35x121 feet. Call for particulars.

PRINCESS AVENUE—1½-story brick, brick foundation, with cement block facing, 2 bedrooms, modern conveniences, verandah, lot 32x122 feet. Price, \$2,000.

LONDON SOUTH—Two-story frame, brick foundation, 4 bedrooms, modern conveniences, lot 32x129 feet. Price, \$2,200. Easy terms, \$20 down and \$20 per month.

CENTRAL AVENUE—Frame cottage, 3 bedrooms, lot 20.5x150 feet. \$1,550.

MATLAND STREET—1½-story frame, brick foundation, 4 bedrooms, gas, lot 32x130 feet. Price, \$2,350.

RAILWAY STREET—Two-story brick, 4 bedrooms, modern conveniences; lot 40x130 feet. Price, \$3,200.

ELMWOOD AVENUE—Two-story red brick, 4 bedrooms, modern conveniences. Price, \$2,600.

One of the best corners in the North End. 2½-story red pressed brick house, stone foundation, 5 bedrooms, all modern conveniences, lot 50x126 feet. Call for particulars.

COLDBURN STREET—2-story red brick, cement block foundation, all modern conveniences. Call for particulars.

QUEBEC STREET—1½-story brick veneer, cement block foundation, 2 bedrooms, modern conveniences, lot 22x150 feet. Price, \$3,000.

A Farm of Your Own

Farming is the surest foundation for a life of independence, comfort, health and happiness. Buy a farm in Ontario now while they are cheap. We have farms for sale in every county in Western Ontario. The following are short descriptions of a few of the farms we have for sale:

No. 6426—50 acres in the Township of Caistor, County of Lincoln, soil gravelly and clay loam, 10 acres timber, maple, oak, pine and elm, 4 acres of orchard, 14½-acre frame house 18x28, log barn 18x24, log implement house with loft above 14x15, ten miles to Dunnville market one mile to electric railway, one mile to Warner P. O.

No. 6418—House and ½ acres in the Township of Westminster, County of Middlesex, soil clay loam, all kinds of fruit, new 1-story frame house 36x24, barn 12x12, wagon shop and paint shop; 3 miles to Dorchester railroad station, ¼ mile to Nilestone P. O.

No. 6417—1 acre and house in the Township of North Dorchester, County of Middlesex, soil clay loam, ¼ acre of strawberries, plums and pears, also raspberries, 1-story frame house 24x28, frame barn 16x20 on cement foundation; 3 miles to Dorchester railroad station, 7 miles to Nilestone market.

No. 6412—200 acres in the Township of Deerpark, County of Oxford, soil clay and clay loam, 35 acres bush, 1 acre of orchard, 1½-acre of alfalfa, 18x24, barn 60x109 on cement basement, barn 24x45, a number of other outbuildings; 5 miles to Nilestone market and railway station, 1 mile to Brownsville P. O.

For further list of farms which we have for sale, send today's Free Press, or send for our catalogue.

THE WESTERN REAL ESTATE EXCHANGE, LTD.

TELEPHONE 696. 78 DUNDAS STREET, LONDON, ONT.

REAL ESTATE FOR SALE.

TENDERS WILL BE RECEIVED until Monday, 19th December, 1910, for the purchase of the following property, namely: First—Brick residence, No. 160 Central Avenue, in the City of London, modern conveniences. Second—Brick residence, No. 340 Grosvenor Street, in the City of London, modern conveniences. The above property to be sold subject to approval of official guardian of infants. Highest or any tender will be accepted. THE LONDON AND WESTERN TRUSTS COMPANY, LIMITED, administrators. JOHN D. O'NEILL, solicitor, London, Ont.

A. A. Campbell

Real Estate, Loans and Investments, 428 Richmond St. LONDON, ONT.

All classes of property for sale or exchange. Estates managed. 237-ty

FOR SALE—FIFTY ACRES OF FARM

pasture land, lot 8, con. 5, Lobo. For information apply to W. A. Zavitz, Poplar Hill, Ont.

FOR SALE—FRAME COTTAGE

all conveniences, good locality, fifteen minutes' walk from market. Box 103, Advertiser.

FOR SALE OR RENT—100 ACRES, LOT 11, con. 6, Westminster Township

Apply Janet Nichol, 7 Maryboro Place, London, Ont.

Anderson & Hatch

ROOM 22, BANK OF TORONTO CHAMBERS, PHONE 2322.

REAL ESTATE FOR SALE

3 acres—Large frame cottage on cut stone foundation, new furnace, small store and postoffice in connection, 2½ miles to the city market. Apply Anderson & Hatch.

50 acres—3 miles to London; reduced in price for quick sale. Apply Anderson & Hatch.

50 acres—9 miles to London. Will exchange for city property. Apply Anderson & Hatch.

50 acres—London Township. Would exchange for house in city. Apply Anderson & Hatch.

150 acres—Brick house, bank barn, 3 miles from the village of Lobo, Price, \$1,500 cash. Apply Anderson & Hatch.

75 acres—Township of Lobo; bank barn, 15 acres of fall wheat, 14 acres of rye. Price, \$2,600. Apply Anderson & Hatch.

100 acres—Township of Lobo, first-class land; good house and outbuildings. Price, \$6,000.

MEDICAL CARDS.

DR. G. L. CLARKE—EYE, EAR, NOSE and throat. 394 Dundas street.

J. B. CAMPBELL, M.A., M.D.—SPECIALTY, diseases stomach. Hours, 2-4, 7-8, and appointment.

DR. NELSON GEORGE, 332 DUNDAS street, northwest corner Waterloo. Phone 309.

DR. THOMAS R. PHIPPS—OFFICE, Corner Wellington and Grey streets. Phone 3310.

DR. MEEK, QUEEN'S AVENUE—Specialty, diseases of women. Hours, 10 to 2.

D. HUTCHESON, HOGG, M.D., C.M.—Surgical diseases. Corner York and Talbot streets.

DR. ALICE JAMIESON—REMOVED TO 322 Queen's Avenue. Phone 1923 for appointments.

F. L. BURDON, M.D., L.R.C.P. AND S. (Edinburgh)—Special attention diseases women, children. Office and residence, 451 Waterloo street. Phone 258.

DR. SEPTIMUS THOMPSON, 443 PARK avenue, corner Queen's—Eye, ear, nose, throat.

DR. E. PARDEE BUCKE, 207 QUEEN'S avenue—Eye, ear, nose and throat.

DR. JAS. L. STAPLETON, 405 DUNDAS. Phone 2713. Hours, 2-4, 7-8.

DR. ERNEST WILLIAMS—PHYSICIAN.

DR. McLELLAN, EYE, EAR, NOSE, throat. Hours, 10 to 4, 6 to 7:30. Sundays by appointment only. 564 Richmond.

R. W. SHAW, M.D., L.R.C.P. AND M.B.C.S. (England), 297 King. Phone 839.

DR. PINGEL—OFFICE, 316 QUEEN'S avenue, London. Electrical treatment. Diseases of women a specialty.

DR. NORMAN R. HENDERSON, CORNER Park and Dufferin. Eye, ear, nose, throat.

DR. COOLIDGE, QUEEN'S AVENUE—Specialty, diseases of women. Hours, 10 to 12.

LEGAL CARDS.

T. H. LUSCOMBE, BARRISTER, SOLICITOR, etc., 159 DUNDAS, near Richmond. Money at lowest rates.

W. H. BARTRAM, BARRISTER, SOLICITOR, etc., Office, 59 Dundas street.

STUART & SCANDRETT, BARRISTERS, etc., 58 Dundas. Money to loan. Alex. Stuart, K.C.; T. W. Scandrett.

GRAYDON & GRAYDON, BARRISTERS, solicitors, notaries, 415 Talbot street, N. Parke Graydon; A. H. Marshall Graydon.

GIBBONS, HARPER & GIBBONS, BARRISTERS, etc., corner Richmond and Carling. George C. Gibbons; Fred F. Harper; George S. Gibbons.

CRONYN & BETTS & COVERIDGE, barristers, etc., Huron and Erie building. Private funds to loan, lowest rates.

BUCHNER & GUNN, BARRISTERS, solicitors, etc., corner Talbot and Carling. Phone 99. Money to loan. U. A. Buchner; J. M. Gunn, B.A.

BLACKBURN & WEEKES, BARRISTERS, solicitors, notaries, etc., 124 Carling street. G. N. Weekes; H. S. Blackburn.

JARVIS & VINING, BARRISTERS, etc., 101 Dundas. C. G. Jarvis; Jared Vining, B.A.

MACPHERSON & PERRIN, BARRISTERS, solicitors. Money to loan. Robinson Hall Chambers.

McKILLOP & MURPHY—OAK HALL BUILDING.

J. M. McEVOY, BARRISTER, SOLICITOR, Robinson Hall Chambers. Money to loan.

J. F. FAULDS, BARRISTER, ETC.—Robinson Hall Chambers.

J. H. A. BEATTIE, BARRISTER, ETC., 87½ Dundas street. Money to loan on real estate.

PURDON & PURDON, BARRISTERS, solicitors, etc., Masonic Temple building, corner Richmond and King. Thos. H. Purdon, K.C.; Alexander Purdon.

TENNENT & CAMPBELL, BARRISTERS, solicitors, etc., 75 Dundas. Money to loan, lowest rates.

FITZGERALD & FITZGERALD, BARRISTERS, Money to loan. Masonic Temple, London.

MONEY TO LOAN.

PRIVATE AND TRUST MONEY TO loan on farm and city property; lowest rates, amounts and terms to suit; no commission charged. T. W. Scandrett, solicitor, 98 Dundas street.

PRIVATE FUNDS TO LOAN ON MORTGAGES on real estate, Macpherson & Perrin, 57 Dundas street.

PRIVATE FUNDS AT LOWEST RATES—M. P. McDougall, barrister, 413 Talbot.

MONEY TO LOAN AT LOWEST RATES—Knott & Sangster, Room 101, Masonic Temple, London.

PRIVATE FUNDS TO LOAN—LOWEST rates, Buchner & Gunn, corner Talbot and Carling.

STOCKBROKERS.

FOR SALE—LONDON LOAN AND Dominion Loan Companies' shares. John Wright, stockbroker, London, Ont. Phone 693.

PATENTS.

P. J. EDMUNDS, REGISTERED ATTORNEY and Solicitor of Patents, London, Canada.

MUSICAL INSTRUCTION.

London Choral Society. A few voices, ladies and gentlemen, to complete limited number. Apply Hyatt Avenue Methodist Church, Tuesday evening, 7:30.

MR. BERT WEIR HAS RESUMED teaching at his studio, 493 Adelaide street.

MISS JEAN WALKER, TEACHER OF elocution. Concert engagements accepted. Studio, 212 Dundas street.

JAS. CRESSWELL, MUSICAL DIRECTOR Grand Opera House—Violin, band and orchestral instruments. 495 King.

KENWICK MALE QUARTETTE OPEN for engagements, concerts, banquets specialty. A. Bowman, 193 Dundas street.

JACK PATTERSON, CHARACTER comedian, Canada's Harry Lauder. Booking strong. Companies supplied. 82 Rectory.

MR. CHARLES E. WHEELER HAS resumed teaching. Studio, 429 Waterloo street. Telephone.

VETERINARY SURGEONS.

C. S. TAMLIN, V.S.—OFFICE AND hospital, 453 Talbot. Phone 665; residence, 768.

WILLIAM McDONALD, SUCCESSOR to J. H. Tennant, Office, 137 King; residence, 121 Bathurst street. Phones, office and residence.

SMALLMAN & INGRAM, LIMITED

WEATHER PROBS. COLDER.

SMALLMAN & INGRAM, LIMITED

These Are the Days To Do Your Christmas Shopping



While your thoughts are cool and collected, while you are far enough from Christmas not to be worried and hurried into making your selections, while Christmas stocks are full and the choosing so easy.

With the modern equipment and store conveniences shopping is made a pleasure at this store. With nearly 20,000 square feet of floor space on every floor, you may walk leisurely from aisle to aisle and from floor to floor and view the greatest and best stock of seasonable merchandise ever displayed at this store, and we venture to say the greatest Christmas stock under one roof in Western Ontario. Have your wraps or luggage checked at Parcel Room on Main Floor, and if you wish to save time ask for a Transfer Card with your first purchase and thus avoid waiting for change at each counter by arranging for payment of all at Transfer Office when finished.

New American Silk Foulards

At Muslin Counter—For Evening Wear.

We have just received a shipment of this pretty American Evening Wear Silk from the manufacturer in New York, a sheer silk with just enough cotton mixture to give it strength and durability, in plain grounds, printed in pretty dotted designs in pale blue and black, navy and white, black and white, champagne and black, brown and white, black and purple and reseda and white, also in self colors of saxe blue and champagne, 27 inches wide. At, per yard, 50¢.

Also SILK-STRIPED MULLS, in pretty self-colored stripes of reseda, pink, pale blue, saxe blue, champagne and ivory, 27 inches, at, per yard, 39¢.

French Flannels and Kimono Cloth

For Ladies' Waists, Sacks, House Dresses, Kimonos, Bath Robes, etc.

FRENCH FLANNELS—Paisley designs, in pale blue, black and mauve, mauve and green, pink and tan, and red, also fancy stripes in green, Alice blue, tan, pale blue, mauve, purple and many other colors; 27 inches wide. At, per yard, 55¢.

GERMAN VELOURS, in pale blue and white, reseda and white, red and white, red and green, navy and pale blue, gray and white, scroll and stripe designs, good heavy weight and very soft, 42 inches wide. At, per yard, 50¢.

German Velour in gray and white, navy and white, pink and white, pale blue and white, and reseda and white, small figured design, extra heavy quality, soft, 27 inches wide. Per yard, 25¢.

VELVET-FINISHED GERMAN WRAPPERETTE, all the newest colorings, in plaids, stripes, etc., perfectly fast colors, 27 inches wide. At, per yard, 30¢.

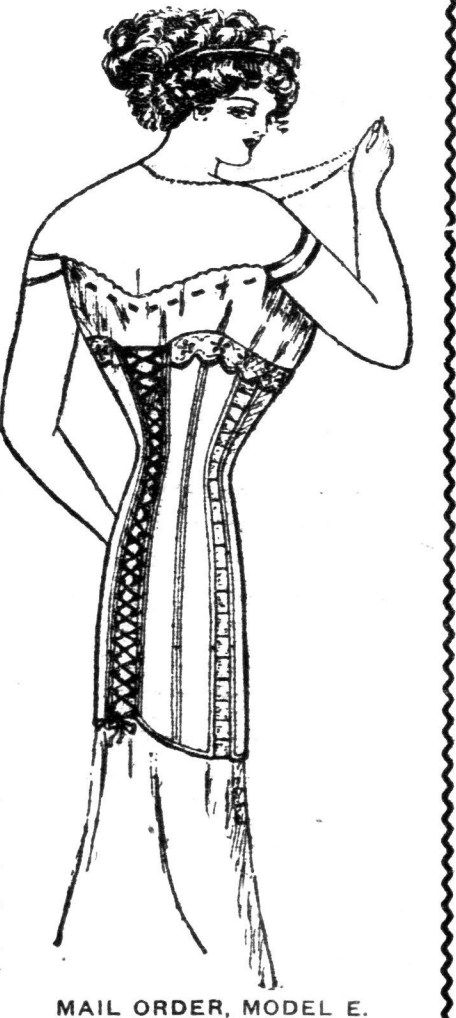
AMERICAN KIMONO CLOTH, in navy, green, red and brown, Japanese fan designs, also brown, red and green Paisley patterns, etc., 27 inches wide. At, per yard, 20¢ and 25¢.

Make an early selection of these while the range is complete. Many useful and acceptable Christmas gifts will be made from the above materials. A waist length, sack or bath robe length are useful gift suggestions.

West Aisle—Dundas Street Section.

The New Model E

The picture is an illustration of our new "Artists'" Model Corset, which is a model cleverly designed for all figures and for all occasions, holding the flesh very snug and straight from the waist down, and is extremely long, yet the boning is short enough not to cause discomfort to the wearer. The bust is low in front and medium under arm and across back. Cut with sufficient fullness to hold the flesh without crowding, and still retain its graceful lines. The merits of the "Artists'" Model Corsets are well known to every woman who has ever worn them, and when once worn no other corset can replace them with the woman whose aim is to be correctly corseted, which is an absolute necessity if you desire to be properly gowned. Our new "Artists'" Model, style E, meets every requirement of modern dress and is designed to suit all figures. Mail orders promptly filled. Price, \$5.00.



MAIL ORDER, MODEL E.

SEE OUR UNBREAKABLE DOLLS IN TOY TOWN.

SMALLMAN & INGRAM, LIMITED

MISCELLANEOUS.

CALIFORNIA OIL MAP, SHOWING all the fields, will be mailed to you upon application; also our monthly trade paper, Sagar-Loomis Company, Phelan building, San Francisco, Cal.

JAMES McMILLAN, CHARTERED ACCOUNTANT, city and district, 295 Princess avenue.

ARCHITECTS.

WILLIAM G. MURRAY, ARCHITECT, 111 (first floor) Masonic Temple, Phone, 461 Talbot street.

REMOVAL—GEORGE CRADDOCK, architect, 461 Talbot street.

H. C. McBRIDE, ARCHITECT—SIXTH floor, Bank of Toronto Chambers.

SLATE ROOFING.

SLATE ROOFING, ASPHALT CEMENT paint for iron roofs, Walter Scott, 504 York street, London.

DENTAL CARDS.

DR. G. H. KENNEDY DENTIST—Removed to 169½ Dundas, opposite old office. Phone 975.

OSTEOPATHY.

DR. H. V. CATON HAS REMOVED TO 570 Richmond street. Phone 1573.

DR. MARIE H. HARKINS, GRADUATE American School Osteopathy, Kirksville, Mo. 114 Masonic Temple. Phone 1650.

SURVEYORS.

F. W. FARNCOMB, CIVIL ENGINEER and surveyor, Bank Toronto Chambers.

GARMENT CUTTING.

DRESSMAKERS WITHOUT A SCIENTIFIC method of preparing patterns and marking material should investigate our teaching. Established 1895. Cutting School, 243 Dundas street, London.

MARRIAGE LICENSES.

MARRIAGE LICENSES ISSUED BY W. H. Bartram, 99 Dundas street.

MARRIAGE LICENSES ISSUED BY H. J. Childs, druggist, 632 Dundas.

EDUCATIONAL.

FRENCH AND GERMAN—PRIVATE and class lessons. Miss Henrietta English, 255 Wharncliffe west. Telephone 1082.

PHYSICAL CULTURE.

HATTIE E. ROONEY, A.L.S.E., TEACHER of elocution, expression, physical culture. Studio, 253 Queen's avenue, Ont.

CHINESE LAUNDRIES.

LEE HING LAUNDRY COMPANY, 485 Richmond. Phone 1344. Goods called for and delivered. Our prices are very lowest that we can do first-class work for. Try first-class laundry.