

distance from the starting point on the Columbia river to Midway is 99 miles. Commencing at West Robson the road follows the Columbia for about 18 miles, gaining in altitude all the while, so that where it turns more westerly it is high above the river level. Running in a generally westerly direction it follows up Brooklyn

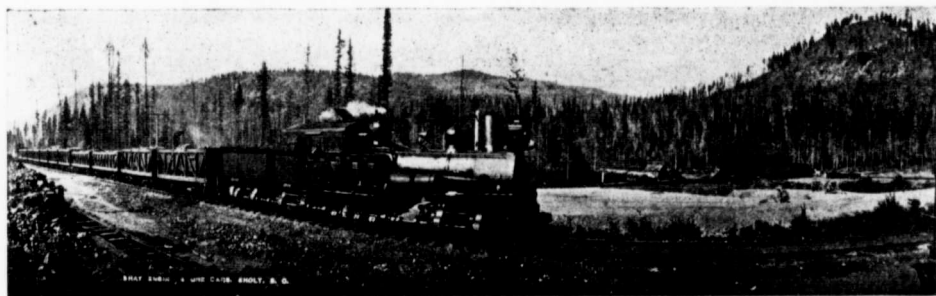
river and about 4,000 feet above sea level, this being the highest altitude attained along the line. From Summit to Cascade, at the foot of Christina lake, the distance is 24 miles and the general direction southerly. On this long descent into the valley of the Kettle river the line passes through the Burnt basin, in McRae pass,



KETTLE RIVER BRIDGE AT CASCADE, B. C.

creek to the divide between the head of this creek and Dog creek on the other side. Here there is a big tunnel, known as the Bull Dog tunnel, 3,000 feet long, 16 feet wide and 23 feet high. Some 40,000 cubic yards of rock were taken out of it, and the work of driving it through the mountain took nearly 18 months. This

and the small town of Gladstone, down McRae creek to Christina lake, and thence along the eastern side of the lake to Cascade. From Cascade, about 13 miles to the adjoining towns of Grand Forks and Columbia, the road runs along the valley of the Kettle river. Then a turn northward is made up the north fork



SHAY ENGINE AND ORE CARS, EHOLT, B. C.

tunnel reduces the elevation 500 feet, the summit of the mountain over which the road would otherwise have had to go being that much higher than the tunnel level.

From Tunnel the line runs up Dog creek eight miles to Summit, which is 2,575 feet above the Columbia

of Kettle river, ascending once again, and after passing Niagara—a deserted construction town—a westerly direction is maintained up Brown's creek until Eholt is reached at about 14 miles from Grand Forks. Leaving Eholt, where the Phoenix branch joins the main line,