

Students press for relocation of Dean's office

By DERWIN GOWAN

Everything from the yearbook to Student Union Building expansion was discussed at last week's Alumni sponsored leadership conference. Of immediate interest is that a movement has been started to relocate the Dean of Students in the SUB.

The Dean, Barry Thompson said that he was responsible for all UNB students in approximately 35 departments and 19 undergraduate programs. He is concerned with everything concerning the student except what happens in the classroom. He is supposed to make sure that students are informed, and know how they fit into the university community. However, the Dean continued, a lot of students do not know about the Dean's office, or even where it is.

This prompted Dave Miller, Director of CHSR to state that, as far as he knew, ours is the only Student Union in Canada without counselling services in the Student Union Building.

After further debate, it was decided that the SUB was the logical place for the Dean of Students, as more traffic goes through there and more students could get to know him. Also, since it is planned to eventually move student services to the SUB, it was the general feeling of the campus leaders that the Dean of Students was a logical place to start.

The Dean said that some of the services coming under his jurisdiction are both residence and off campus housing, counselling services, overseas students services, high school relations, and so on. He said he believes that all of these services should come from under one roof. He expressed special concern with respect to getting services to off campus students.

At the present time, student services are spread across the campus. They are co-ordinated by a group of student services officers. Still, it is usually hard for the student to find what he is looking for. One answer suggested was that a campus co-ordinator be appointed, with an office in the SUB, to direct people to the right places.

Upon question, Thompson said that a sub-committee of the student services committee of the Senate is being struck with respect to the question of discrimination by professors towards students with respect to race, sex, et cetera. He said that there are some professors who knowingly or unknowingly discriminate.

He also talked of student financial aid, saying that he is on the scholarship committee, and, in some cases, can get emergency funds. He can also have some influence with the Canada Student Loans people.

The Dean of Students has also started a column in The Brunswickan. He advised everyone to read it.

Thompson does not believe that athletics should be under the direction of the Dean of Students, as he would become too involved in administrative detail to be able to meet students on an individual basis. He said that students should be able to see the Dean when the problem arises, and not two weeks later.

This is to include problems with respect to the new university centre, he said. For example, if people were refused ice time for no good reason, he would intervene.

SUB expansion was another area of major debate, particularly with respect to centralizing student services.

The SUB is incapable of handling everything demanded of it according to SUB Board of Directors chairman Roy Neale. Neale commented that the toilet facilities are in particularly poor condition. A lot of the things hoped for the building did not materialize, and he described the present facilities as "useless."

With the realization that changes are needed, it has been decided to look into the possibility of extending the building. A letter is to be sent, in the near future, he said, to the leaders of all campus organizations to get student input and find out what their space requirements are.

Neale continued by saying that since student services are to be integrated within a single building, and since Annex B is scheduled to come down, there will be no place else for the services to go if the SUB is not expanded.

The expansion committee has been discussing the idea of a commercial mall as well as a room that can seat 1,000 people.

Neale wants each organization to set down its space priorities so that they can find out what the real space demands are.

The campus leaders then discussed how the expansion should be funded. Roy Neale stated that it would likely be a few years before construction begins. However, he said that we should take a student fee increase now so that future students will benefit. This is essentially for the good of the organization and not for our immediate good. We should leave the place better than it was when we came here, he continued. SRC Comptroller Chris Gilliss said that the Union should look into the financial aspects of expansion before we settle on any definite fee increase. It was mentioned by Miller that we presently have a bad arrangement with the mortgage agreement, as it is going to take ten years to pay off the present debt. SRC President Peter Galoska state that if we do not start paying now, students in the future will suffer, and the SUB will never be expanded.

Student Senator Warren McKenzie stated that it would be bad to let the administration pay too much, as happened at some other Canadian universities, they could take over.

SRC Financial Advisor Wayne Charters said that we should start investing money now, putting all surpluses we show from year to year in a special building fund. With this in mind, Miller mentioned that the SUB already has \$40,000 invested. Part of this could be set aside each year without cutting services. The same is true for SRC surpluses.

The debate on SUB expansion financing brought up the whole subject of student union fee increases. CHSR News Director Chris Pratt said that before fees can be increased, the SRC will have to let students know what the present \$35 is being spent on.

Gilliss retorted that anyone can look through the annual budget. He went on to say that the vast majority of union money comes from the fees, which have not gone up since 1963. UNB has the second lowest student union fees in the Atlantic Provinces, and the only institution with lower fees has no SUB.

Gilliss said that the UNB Student Union has shown a surplus in the last few years, and this is the only reason why there was no deficit this year. The greatest expenditure is on the SUB mortgage, and money was allocated to twice as many groups as two years ago. Most of these new organizations are student services, and he feels that most Student Union supported programs are important. Without a fee increase, non-service programs will have to be cut. He said that a five-dollar increase will just cover inflation next year. When SUB expansion is added to this, Gilliss said he can see a ten dollar increase.

Our SUB is semi-autonomous, and keeps its own revenue. The Administrative Board is trying to cut costs where possible, but new student services are being planned, and 99 per cent of the funds for these will come from student fees, Gilliss said.

Galoska said he would rather see an increase in fees than have student services and programs cut. He stated that the AB does not allow groups to carry on at luxury levels and we are saving as much as possible now without cutting back.

Galoska said that a lot of students do not seem to care how their money is spent, yet these same people are usually the first ones to complain when something goes wrong. He mentioned particularly the poor response to the open line CHSR program.

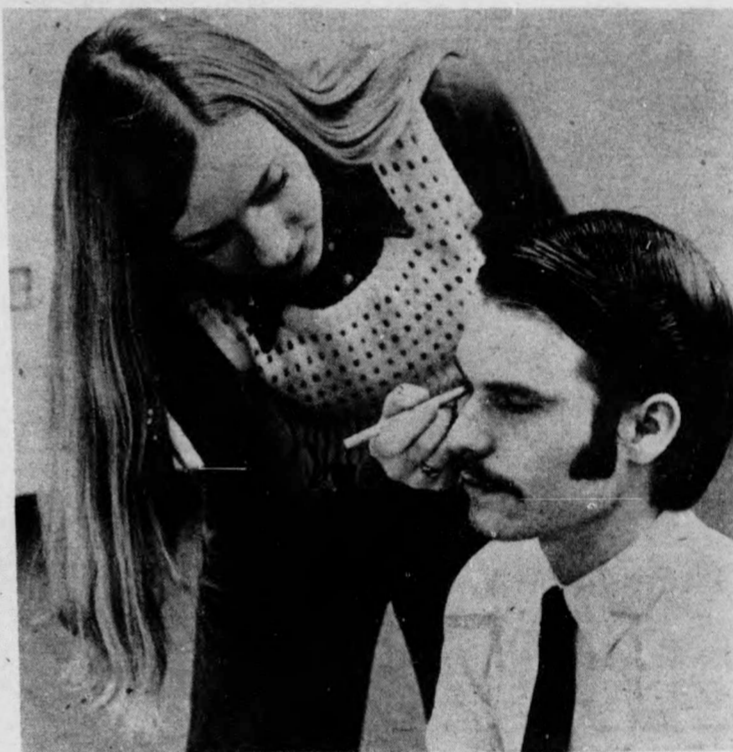
Heather Ratcliff, SRC Secretary, stated that most people would regard a ten dollar increase as unfair, but Galoska replied that

fees should not be increased any more than necessary, as this would be inflationary.

A graduate student present said that he would not like to see an increase as they would not benefit from it as much as other groups. He suggested membership fees for the various organizations instead. To this, an Alumnus replied that if student fees had not gone from \$30 to \$35 in 1963, then there would never have been a SUB today. Also McKenzie said that all students can benefit from broadening programs.

Gilliss mentioned that other universities in the region are considering fee increases. Also, our programs and activities are wider than most other universities in the Maritimes and Eastern Canada.

Galoska stated that part of the reason for this was because of the financial advisor who provides continuity from one year to the next. This helps prevent groups from being "ripped off." Everything here is unified under the



Cathy Payton applies make-up to Brock Peterson a member of the cast for Red 'n Black this year.

Red and Black in final stages

The auditions are finished, the costumes are made, the instruments are tuned and preparations for the 1974 version of Red 'n Black Revue are now in the final phases for what promises to be the most musical, fun-filled entertaining variety show ever held at UNB.

This year's program is scheduled to include a variety of unparalleled musical entertainment ranging from a single guitar to a complete eighteen piece "symphony orchestra" under the direction of a very special university administrator (who shall remain anonymous).

The show boasts performances by student artists, of a calibre equated with that of Elton John, Joni Mitchel and Gordon Lightfoot.

Performances by a 5-piece jazz band, a folk group, a gorgeous kickline of 16 luscious ladies, a 12-girl charleston dance group, and a soliloquy from "Saint Joan" are only a few of a long list of acts (totalling over 25) which will come together to produce an outstanding evening.

When acts such as these are combined with a battery of hilarious skits and comedy routines and tied together by the exciting voice of master-of-ceremonies Alan Bonner, one can do nothing else but guarantee an action-packed, enjoyable two hours of solid entertainment. The Assistant Director of Red 'n Black and Director of Music, Deryk Penk, comments that "the calibre

of actual talent involved in this year's show is by far the best I have ever seen in my four-year involvement. I think that an awful lot of students are going to be very surprised when they see how talented some of their classmates are."

With only the finishing touches left in the making of a show that has taken over a year to put together, Red 'n Black '74 goes on stage at the Playhouse, Nov. 12, 13, and 14. Tickets are on sale beginning today at the SUB Info Desk for the low, low price of \$2.00. This is one Red 'n Black you will not want to miss. Get your tickets soon. These tickets sell-out very quickly!



Here we see the third year nursing students practising their charleston routine.

Photo by James Walker

Photo by The Phantom Photog

Photo by The Phantom Photog

threatens meeting

al co-ordinator. ed his going to the entertainment Confer- saying that he has ce than the present Chairman as he has Orientation, Fall other events. He arn more about ng agencies, as the ly getting ripped off al agents. The chairman is going

oyra Berry noticed allowed ten dollars n is above the usual t. Gilliss said that dard rate, as the s being hosted at an te. McKenzie also ten dollars was not for that part of the

informed council that ill entertainment will money or break even ot for entertainment n spent. He hopes to n getting cheaper t from the confer-

ck Fisher wanted to McKenzie was only onorarium and t he allotted \$100. hat the honorarium McKenzie's half term Co-Ordinator, and not os. Fisher said that only doing the bare and that Warren d also performed the nt's function as well. anked Fisher for the aid that the dollar the honorarium was

continued on page 11

wise

erickton south.

1/2 Queen St.