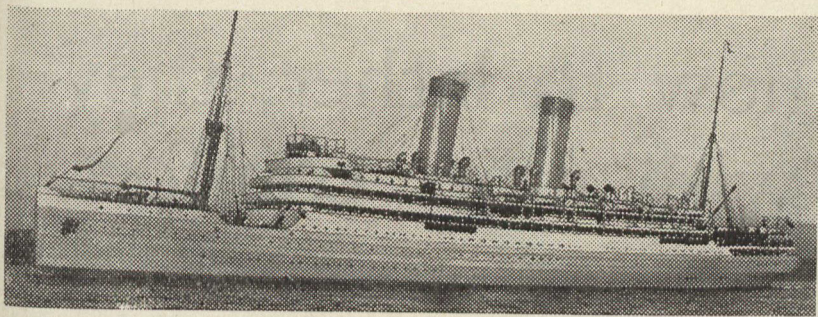


Canadian Northern Steamships Limited



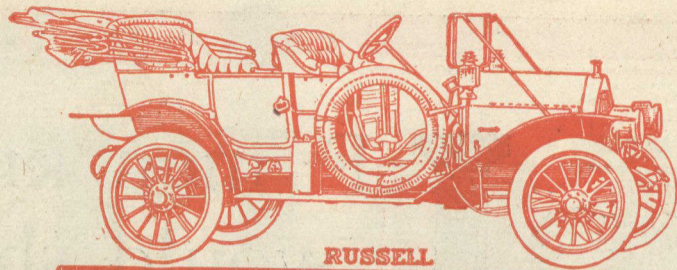
THE ROYAL LINE TRIPLE SCREW ROYAL EDWARD
TURBINE STEAMERS ROYAL GEORGE

The New Fast Route between MONTREAL, QUEBEC and BRISTOL

Sailing from Bristol		Sailing from Montreal
May 12th	ROYAL EDWARD	May 26th.
May 26th.	ROYAL GEORGE	June 9th.

and fortnightly thereafter

Tickets and full information on application to any steamship agent or
H. C. BOURLIER, General Agent for Ontario Toronto, Ont.
GUY TOMBS, G. F. and P. A., C. N. Q. R., Montreal, Que.



RUSSELL

Russell
"30"

**IF YOU
HAVEN'T
YET SEEN
THIS MODEL
DON'T BUY A
CAR TILL YOU DO**

Q In your own interest see what this car is and what it will do. Compare it with all other makes; compare it for material; compare it for workmanship; compare it for finish; compare it for style. Compare it by any standard, no matter how high, and you will say that you never saw such a car for the money—that it's a better car than you believed the market held at anywhere near the price—that it's high-grade in every sense of the term, as high-grade as a car can be.

Q This year's Russell "30" is a standardized car—a wonderful car—even better in some respects than last year, and sold at only

\$2,350, FULLY EQUIPPED

SPECIFICATIONS

115 inch wheel base, 34 inch wheels, selective transmission, metal to metal clutch, shaft drive, floating type of rear axle, choice of four splendid bodies

See this car—call and have it demonstrated. Let us show you how it takes the hills. It's a sensation.

CANADA CYCLE & MOTOR CO. LIMITED

MAKERS OF HIGH GRADE AUTOMOBILES
WEST TORONTO

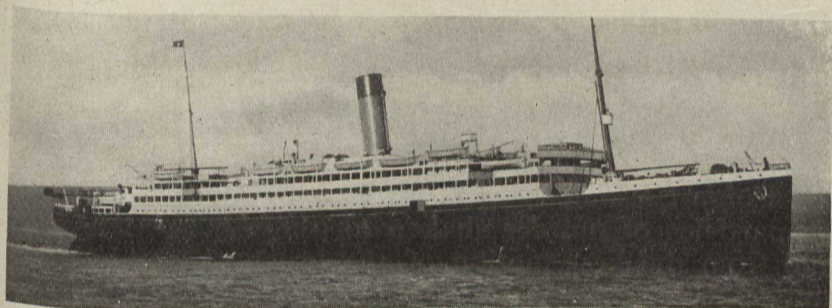
Branches: Toronto, Hamilton, Montreal, Winnipeg, Calgary, Vancouver, Melbourne, Aust.



TROUT FISHING

The season opens May 1st. and it is not too early to plan a Spring fishing trip—commence by securing copy of 1910 "Fishing and Shooting," *Sportsman's Map* and literature descriptive of Canada's fishing grounds best reached by the Canadian Pacific Railway.

Write for Illustrated Literature and all Information to
R. L. Thompson, District Passenger Agent, Toronto



WHITE - STAR DOMINION CANADIAN SERVICE
ROYAL MAIL STEAMERS

1910 — WEEKLY SAILINGS — 1910

R. M. S "LAURENTIC"	R. M. S. "MEGANTIC"
14,892 Tons Triple Screw	14,878 Tons Twin Screw

The largest and most modern Steamers on the St. Lawrence route

H. G. THORLEY, Passenger Agent - - 41 King Street East, TORONTO

HOLBROOK'S
WORCESTERSHIRE

The Sauce that makes the whole world hungry.

Made and Bottled in England

SAUCE



The Finest Fishing Resorts in America

Are located in "The Highlands of Ontario," Canada, and are reached by

The Grand Trunk Railway System
THE DOUBLE-TRACK TOURIST ROUTE

The Kind You Catch and Where They are Caught

LAKE OF BAYS—Speckled Trout, Salmon Trout and Black Bass.
ALGONQUIN PARK—Speckled Trout, Black Bass and Salmon Trout.
TEMAGAMI—Black Bass, Lake Trout, Speckled Trout, Wall-eyed Pike.
LAKE NIPISSING—Black Bass, Maskinonge, Pickerel, Pike.
GEORGIAN BAY—Black Bass, Salmon Trout, Lake Trout, Pickerel, Pike.

OPEN SEASONS

BLACK BASS—June 16 to April 14 following year	SPECKLED TROUT—May 1 to September 14
SALMON TROUT and LAKE TROUT—Dec. 1 to Oct. 31 following year.	MASKINONGE—June 16 to April 14 foll'ng year
	PICKEREL—May 16 to April 14 following year

The Beautiful Muskoka Lakes

Navigation on these delightful lakes is now open The gateway is via Grand Trunk and Muskoka Wharf.

Handsome descriptive literature relative to any of these districts sent on application to
J. D. McDONALD, Union Station, Toronto, Ontario
J. QUINLAN, Bonaventure Station, Montreal, Quebec

ARE YOU

on the list for a copy of

"Tours to Summer Haunts"

describing

Canadian
Tours

to

Canadian
Resorts

BY THE SEA

in Quebec, New Brunswick, Nova Scotia, Prince Edward Island.

Write Advertising Dept Intercolonial Railway, Moncton, N. B.