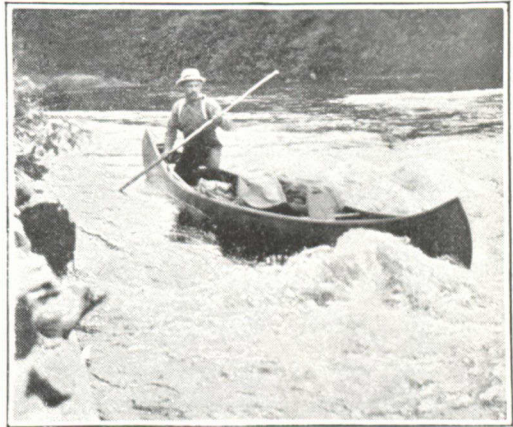


## PROF. MILLER AT YALE. --

Prof. R. B. Miller, recently of the University of New Brunswick's Department of Forestry, has been for some time acting as lecturer at Yale Forest School on Forest Management, and State Forest Law. In addition to these duties, Prof. Miller is engaging in special post-graduate studies.

In order to encourage slower eating and better mastication it is proposed to permit lumberjacks to talk at table. If they do, and the straw-boss will stick around, he will probably hear something to his disadvantage.—“The American Lumberman.”



## THINKING OF STARTING MOTION PICTURES ?

**For Travelling Lecturers and School Use, the  
“De Vry” Stands in its Own Class.**

- It weighs but twenty pounds.**
- Built the size of a suit case, 17 by 17 by 7 inches.**
- Attaches to any light socket.**
- Takes standard size reels and film.**
- Any size picture up to 12 feet.**
- Any throw up to 80 feet.**
- No setting up; no adjustments.**
- Ready instantly.**
- No special wiring required.**
- Splendidly constructed.**
- Built to endure.**
- Price \$200 complete.**

**Made by the De Vry Corporation, Chicago,  
and sold through the Canadian Forestry  
Journal.**

**Address, Canadian Forestry Journal,  
Supplies Department,  
206 Booth Building, Ottawa.**

In 51 years since Confederation, the forests of our Dominion provided 1,400 million dollars in export sales; cereal crops accounted for 200 millions.

## A Woodman's Canoe

**L**IGHT, capacious yet compact. Strong durable, capable of carrying big loads—that is the kind of canoe a Forester wants—and that is a description of a

### CHESTNUT CANOE

Indeed it is the ideal craft for everyone. The woodwork is of the toughest cedar. It is covered with a seamless canvas, in turn covered with an absolutely water-proofing preparation. It is leak-proof and weather-proof.

The pleasures of camping, hunting and fishing are more complete when your equipment includes a Chestnut Pleasure, Sponson, or Cruiser Canoe. You get every kind of service and pleasure out of a Chestnut Canoe including every comfort and safety.

## Chestnut Canoe Co. Limited

Box 460. FREDERICTON, N.B.

## REFOREST BARE HILLSIDES.

The scarcity of lumber for mine pillars and other mine uses has led to the creation of a forestry department by several of the large mining companies, one of which has just reforested Bear Creek watershed with 5,000 white pine, and 5,000 Norway spruce trees.

Thirty thousand more trees are in process of cultivation at Hauto, Pa., in the Panther Creek valley. When timber is ready to cut in the vicinity of the mines troublesome waits and long hauls will be eliminated.

More timber in the anthracite region would stop floods, add to the water supply, reduce the drought periods and enable the anthracite industry to add to its output. Many thousands of acres are available about the mines for reforestation.