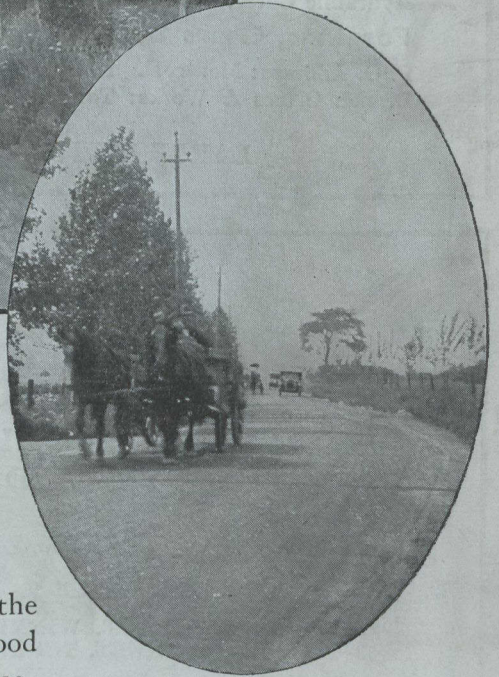
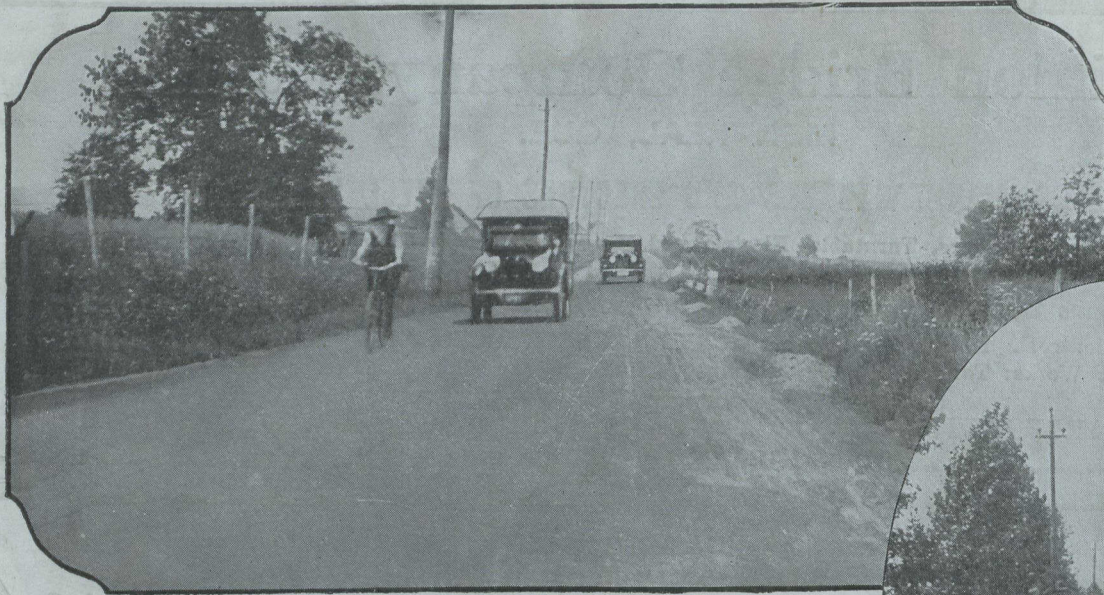


At left: King Edward Highway — O'Connor Section. Maintained with "Tarvia-B".

Below: King Edward Highway — La Presse Section. Constructed "Tarvia-X" Penetration Method. Maintained with "Tarvia-B".



Tarvia Highway at Links Two Nations—

KING EDWARD HIGHWAY is one of the main arteries connecting Canada and the United States. Over it a stream of automobile traffic surges back and forth between Montreal and the resorts and cities of Eastern New York.

The entire length of this famous highway, from Victoria Bridge to the Border, is maintained with Tarvia. That is why the surface is always firm and smooth—proof against the frosts of winter, free from dust in summer and from mud in spring and fall—that is why it so stubbornly resists the wear of hard service.

In all sections of the Dominion, Tarvia Roads

have taken the lead in the good roads movement.

They are ideally suited to Canadian requirements, because they are unaffected by extreme weather conditions. They are within the financial reach of every community—moderate in first cost and unequalled for maintenance economy.

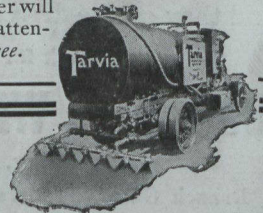
For every road purpose—new construction, salvaging worn-out macadam and gravel roads, maintenance, and repairs—Tarvia gives maximum results at minimum outlay. There are different grades of Tarvia for each of these uses.

Tarvia

*For Road Construction
Repair and Maintenance*

Special Service Department

This company has a corps of trained engineers and chemists who have given years of study to modern road problems. The advice of these men may be had for the asking by anyone interested. If you will write to the nearest office regarding road problems and conditions in your vicinity, the matter will be given prompt attention. *Booklets free.*



MONTREAL
MONTREAL
MONTREAL, N. B.

The *Barrett* Company
LIMITED

WINNIPEG
VANCOUVER
HALIFAX, N. S.