

USE  **QUEEN'S LAUNDRY BAR**
AND SAVE YOUR LINEN.

—BUY THE—
ALBERT TOILET SOAPS
IF YOU WANT THE BEST.
BEWARE OF IMITATIONS

For
Piles,
Burns,
Bruises,
Wounds,
Chafing,
Catarrh,
Soreness,
Lameness,
Sore Eyes,
Inflammation,
Hemorrhages,

USE
POND'S EXTRACT.



DEMAND POND'S EXTRACT.
ACCEPT NO SUBSTITUTE.

RIDGE'S FOOD

Not only to the sufferer wasted by disease does Ridge's Food supplement proper medicines and bring back strength needed, but the delicate mother will find in its daily use just what is needed to check and supplement the drain made upon a ure's forces. Try it, mothers, and be convinced. Ridge's Food is undoubtedly the most reliable food in the market for the rearing of children. Special directions for the most delicate. Send to WOOLRICH & CO., Palmer, Mass., for pamphlet free

LOOK HERE.

IF you are sick get GATE'S FAMILY MEDICINES, they are the oldest and most reliable preparations before the public. Their LIFE OF MAN BITTERS have made more cures of chronic diseases than all others combined. As a proof of this see certificates under oath from those who have been cured in all parts of the Lower Provinces. They will make a well person feel better. Beware of imitations, get the genuine. Sold everywhere at 50 cts per bottle, \$5.50 per doz. C. GATE'S, SON & CO., 9-11 Middleton, N.S.

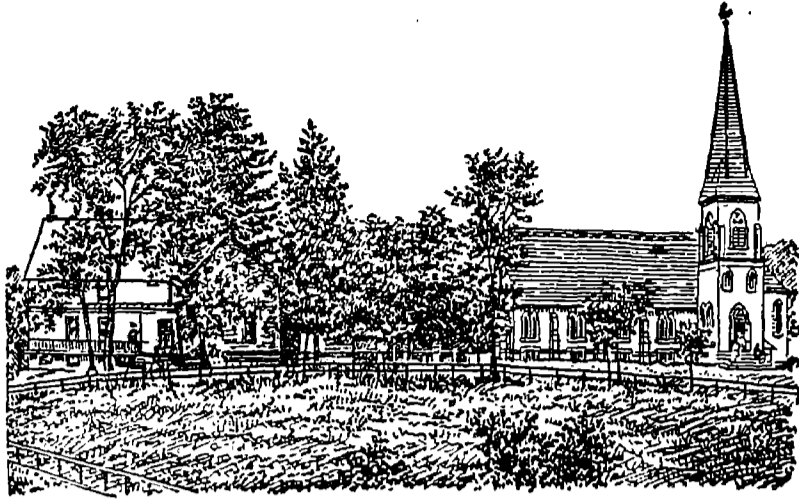
Canada Paper Co.,
Paper Makers & Wholesale Stationers

Offices and Warehouses:
78, 580 and 582 ORAIG ST., MONTREAL
1 FRONT ST., TORONTO.

Mills:
SPRINGVALE MILLS } WINDSOR MILL
WINDSOR MILL } P.Q.

Davidson & Ritchie
ADVOCATES, BARRISTERS, AND
ATTORNEYS AT LAW.

190 ST. JAMES STREET,
MONTREAL



Bishop Stewart School,
FRELIGHTSBURG, P. Q.

HOME PRIVILEGES. EXTENSIVE GROUNDS.
Personal Instruction and Supervision. Situation beautiful and healthful

Re-Opens September 3rd, 1890.

Address
CANON DAVIDSON, M. A.
Rector, Frelightsburg, P. Q.

(PREFATORY NOTE BY THE

MOST REVEREND THE METROPOLITAN.):

"Manuals of Christian Doctrine"

A COMPLETE SCHEME OF GRADED INSTRUCTION FOR
SUNDAY-SCHOOLS.

BY THE
REV. WALKER GWYNNE,
Rector of St. Mark's Church, Augusta, Maine.

EDITED BY THE
RIGHT REV. W. C. DOANE, S.T.D.,
Bishop of Albany.

LEADING FEATURES.

1. The Church Catechism the basis throughout.
 2. Each Season and Sunday of the Christian Year has its appropriate lesson.
 3. There are four grades. Primary, Junior, Middle and Senior, each Sunday having the same lesson in all grades, thus making systematic and general catechising practicable.
 4. Short Scripture readings and texts appropriate for each Sunday's lesson.
 5. Special teaching upon the Holy Catholic Church, (treated historically in six lessons), Confirmation, Liturgical Worship, and the History of the Prayer Book.
 6. A Synopsis of the Old and New Testament, in tabular form, for constant reference
 7. List of Books for Further Study.
 8. Prayers for Children.
- | | |
|---|------|
| Senior Grade for Teachers and Older Scholars..... | 25c. |
| Middle Grade..... | 15c. |
| Junior Grade..... | 10c. |
| Primary Grade..... | 8c. |

New Edition

THOROUGHLY REVISED, WITH ADDITIONS,

And adapted for use in both the English and American Churches.

INTRODUCTION BY THE
VERY REV. R. W. CHURCH, M.A., D.C.L., Dean of St. Paul's

PREPARATORY NOTE TO CANADIAN EDITION BY THE
Most Rev. The Metropolitan.

JAMES POTT & CO., CHURCH PUBLISHERS,
14 and 16 Astor Place, New York.

ROWSSELL & HUTCHISON,
TORONTO, CANADA.

M. S. BROWN & CO.,

ESTABLISHED A.D. 1840.

Dealers in Communion Plate, Brass
Altar Furniture, Jewellery and
Silver Ware.

128 Granville St., Halifax, N.S.

Our special chalice 7 1/2 inches high, gilt bowl and Paten 6 inches, with gilt surface of Superior quality E. P. on White Metal and Crystal Cruet with Maltese Cross stopper, at \$14 per set. Is admirably adapted for Missions or small Parishes, where appropriate articles at small cost are required.

The same set E.P. on Nickel, per set \$18.00
Crystal Cruets, singly, each \$3.50
E.P. Bread Boxes, hinged cover and front, 2 1/2 x 2 1/2 x 1 inch..... \$2.50
Brass Altar Crosses, 15 to 24 inch, \$10 to \$25
Brass Altar Desks..... \$8 to \$25
Brass Altar Candlesticks, per pair \$5 to \$10
Brass Altar Vases, plain and fluted \$5 to \$12
Brass Alms Dishes, 12 and 14 inch, partly or wholly decorated, ea. \$8.50 to \$18

Freight prepaid to Montreal on sales for Manitoba and further West.

KNABE

PIANO FORTES
UNEQUALLED IN
Tone, Touch, Workmanship & Durability

WILLIAM KNABE & Co.,
BALTIMORE 22 and 24 East Baltimore street
NEW YORK, 145 Fifth Ave.
WASHINGTON, 817 Market Space.

WILLIS & CO., Sole Agents,
1824 Notre Dame Street, Montreal

UNIVERSITY OF KING'S COLLEGE
WINDSOR, N. S.

PATRON:
THE ARCHBISHOP OF CANTERBURY,
Visitor and President of the Board of Governors:
THE LORD BISHOP OF NOVA SCOTIA,
Governor ex-officio, Representing Synod of New Brunswick:
THE METROPOLITAN,
Acting President of the College:
THE REV. PROF. WILLETS, M.A., D.O.L.

PROFESSIONAL STAFF:
Classics—Rev. Prof. Willets, M.A., D.O.L.
Divinity, including Pastoral Theology—The Rev. Professor Vroom, M.A.
Mathematics, including Engineering and Natural Phil.—Professor Butler, B.E.
Chemistry, Geology, and Mining—Professor Kennedy, M.A., B.A. Sc., F.G.S.
Economics and History, Professor Roberts, M.A.
Modern Languages—Professor Jones, M.A., Ph. D.

Lecturer in Apologetics and Canon Law—The Rev. F. Partridge, D.D.

Other Professional Chairs and Lectureships are under consideration. There are eight Divinity Scholarships of the annual value of \$150, tenable for three years. Besides these (there are) One BIRNEY Exhibition (\$50); Three STEVENSON Science Scholarships (\$50); One MCCAWLEY Hebrew Prize (\$38); One COGSWELL Scholarship (\$120), open for Candidates for Holy Orders; One MCCAWLEY Testimonial Scholarship (\$38); One AKINS Historical Prize (\$30); One ALMON-WELSFORD Testimonial (\$24); One HALIBURTON Prize (\$30); One COGSWELL Cricket prize. The necessary expenses of Board, Rooms, &c., average \$53 per annum. Nominated students do not pay tuition fees. These nominations, fifty in number, are open to all Matriculated Students, and are worth about \$30 for the three years course. All Matriculated Students are required to reside in College unless specially exempted. The Professor's reside within the limits of the University grounds.

THE COLLEGIATE SCHOOL is situated within the limits of the University grounds (40 acres), and is carried on under regulations prescribed by the Board of Governors. For CALENDAR and full information apply to the

REV. PROF. WILLETS,
President King's College,
Windsor, Nova Scotia

WATCHES FREE. 1000 absolutely free goods. Write and be convinced. Canadian Watch Co., Toronto, Canada