

A PINK NOTICE

A pink notice attached to this page shows that your subscription will expire the end of this month. We hope you have enjoyed The Guide and that you will send us \$1.50 for your renewal at once, using the blank coupon and the addressed envelope which will be enclosed. We always give several weeks' notice so that subscribers will have plenty of time to forward their renewals and not miss any copies of The Guide. We cannot supply back copies of The Guide, so we hope you will not delay in sending your renewal. When requesting a change of address, please give us three weeks' notice. If the date of the address label on your Guide is not changed within a month after you send your renewal, please notify us at once. It is always safer to send your money by postal or express money orders. Mail your \$1.50 today.

THE GRAIN GROWERS' GUIDE

"Equal Rights to All and Special Privileges to None"
A Weekly Journal for Progressive Farmers

Published under the auspices and employed as the Official Organ of the Manitoba Grain Growers' Association, the Saskatchewan Grain Growers' Association, and the United Farmers of Alberta.



The Guide is the only paper in Canada that is absolutely owned and controlled by the organized farmers—entirely independent, and not one dollar of political, capitalistic or special interest money is invested in it.

GEORGE F. CHIPMAN, Editor and Manager
Associate Editors: John W. Ward and Ernest J. Trott
Home Editor: Francis Marion Bygones

Authorized by the Postmaster-General, Ottawa, Can., for transmission as second class mail matter.

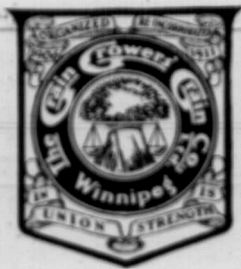
VOL. IX. March 8 No. 10

SUBSCRIPTIONS AND ADVERTISING

Published every Wednesday. Subscriptions in the British Empire \$1.50 per year. Foreign subscriptions \$2.00 per year. Single copies 5 cents.

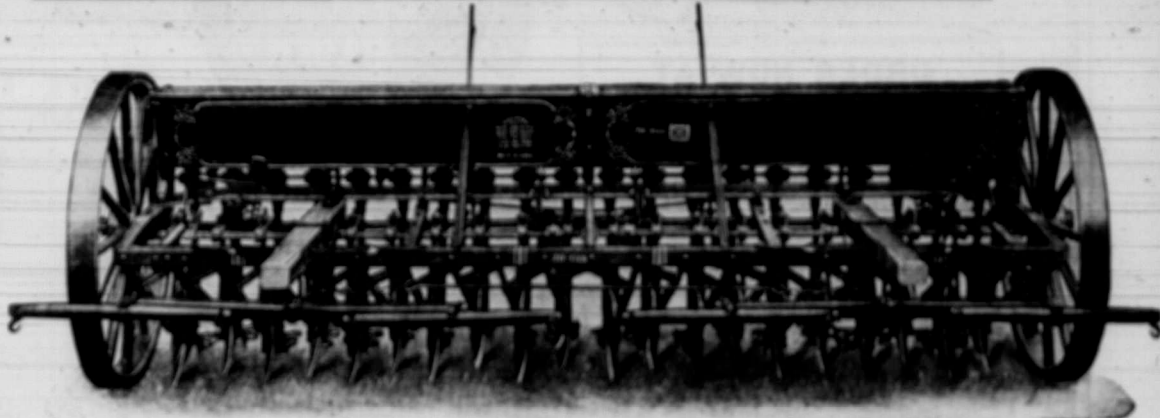
Advertising Rates

Commercial Display—18 cents per agate line. Livestock Display—14 cents per agate line. Classified—4 cents per word per issue. No discount for time or space on any class of advertising. All changes of copy and new matter must reach us seven days in advance of date of publication to ensure insertion. Reading matter advertisements are marked "Advertisement." No advertisement for patent medicines, liquor, mining stock, or extravagantly worded real estate will be accepted. We believe, thru careful enquiry, that every advertisement in The Guide is signed by trustworthy persons. We will take it as a favor if any of our readers will advise us promptly should they have reason to doubt the reliability of any person or firm who advertises in The Guide.



G.G.G. Seeding Machinery

Made to do the work well and to stand the wear and tear of a strenuous seed time



DRILL PRICES

F.O.B. WINNIPEG

	Double Disc	Single Disc	Shoe
No. 16	\$ 99.55	\$ 92.10	\$ 86.70
No. 20	120.75	111.50	104.65
No. 22	129.85	119.55	112.10

Press wheels extra per pair \$3.25.
All drills are fully equipped with poles, eveners and drag chains.

G.G.G. DRILLS have stiff angle frames, reinforced by cross braces and truss rods. Disc gangs are interchangeable with shoe gangs. Disc bearings are compact, giving great clearance, and they are warranted to last as long as the blades. This is the only drill equipped with automatic horse lift. The driver can operate the horse lift levers with knee or foot, leaving his hands free to look after the horses. Foot board runs full length of drill. The drill is perfectly balanced and being carried on 44 inch wheels, light draft is insured.

PLOWS

For your Spring plowing, or for use later in the season, you should get full particulars about G.G.G. Plows before you buy. They are close pointed and strong, and made to turn the furrow right.

Steel Beam Stubble Plow, 14 inches	\$15.00
16 inches	\$17.35
Foot Lift Sulky Plow, with 3-horse hitch	\$44.65
14 inch cut	\$45.70
16 inch cut	\$45.70
Foot Lift Gang, with 4-horse hitch	\$65.65
12 inch bottoms	\$67.85
14 inch bottoms	\$67.85

Write also about Engine Gangs and Prairie Breakers

DISCS

Much of the land that you could not find time to plow last Fall can be put into pretty good shape this Spring, with a good set of disc harrows. G.G.G. Discs have adjustable bracket controlling the center rods; hard maple bushings and bearings that are dust proof and oil tight.

14 Discs, 16 inches diameter, with 4-horse hitch and Tongue Truck	\$38.50
16 Discs, 16 inches diameter	\$41.00

Extra Tongue Trucks \$7.50 each.
Write also about Engine Discs.

HARROWS

No matter what the condition of your land, you must have good drag harrows. Let us fill your needs.

Four-Horse Boss Harrow, 150 teeth, 26 ft. wide	\$20.00
Channel Zig-Zag U Bar Lever Harrow, 3 sections, 15 ft. wide, with Evener, \$17.30; 4 Sections, 20 ft. wide, with Evener, \$24.15; Single Sections, without Evener, \$5.00	
Diamond Spike Tooth Harrow, 4 Sections, with draw bar	\$15.00
6 Sections, with draw bar	\$22.50
Single Sections	\$3.75
Harrow Cart	\$10.00

Write also for Harrow Attachments for your Plow, Gang Plow size, \$10.00; 3 Furrow size, \$11.00.

CULTIVATORS

Land that has been properly cropped for a few years can be put into ideal condition for seeding by using a Spring Tooth Cultivator. We can furnish the ordinary kind or our Special Forkner Tillage Tools. These latter are the latest improved style of Spring Tooth Cultivators made.

Ordinary Cultivator, complete with 17 teeth	\$40.00
7 inch Duck Foot Points, per set	\$4.00
No. 34 Forkner Cultivator, equipped with 18 No. 6 teeth, fitted with 4 inch reversible shovels, for 2 inch spacing	\$93.90
Forkner Cultivator, with 32 teeth for 4 inch spacing	\$102.25
10 inch Duck Foot Sweeps, 60 cts. each; 15 inch, 70 cts.; 20 inch, 85 cts.	

SEEDS—FOR FIELD OR GARDEN

No matter how you prepare your land, you should have real good seed, if you want biggest returns this season. Write us for any seeds you want for field crops, root crops, clovers or grass seeds, seed corn, or vegetable or flower seeds for your garden.

ANYTHING YOU NEED IN YOUR BUSINESS

In addition to the implements mentioned above, do not forget that this Farmers' Company handles Lathing Mills and Grain Pickers, Parkers, Manure Spreaders, Corn and Potato Machinery, Haying Machinery, Wagons, Buggies, Gasoline Engines, Grain Grinders, Feed Cutters, Wood Saws, Pumps, scales, Bushbars (hot air heated), Brooders, Washing Machines, Harness, Coal, Flour, Lumber, Cement, Builders' Supplies, Woven Wire Fencing, Barbed Wire, Fence Posts, Binder Twine and other commodities. Write us for particulars about our Grain Growers' Special Tractor, and our Power Farming Machinery.

GRAIN PURCHASED ON TRACK OR HANDLED ON CONSIGNMENT

The Grain Growers' Grain Co. Ltd.

Branches at REGINA, SASK. CALGARY, ALTA. FORT WILLIAM, ONT.

Winnipeg - Manitoba

Agency at NEW WESTMINSTER British Columbia

Our New Catalog. If you have not received a copy of our 1916 Catalog, write now for Catalog G. For Saskatchewan farmers a special Catalog has been issued jointly by the Saskatchewan Grain Growers' Association and this Company. Copies can be secured by writing to the Central Office of The S.G.G.A. at Moose Jaw, or direct to this Company.

GRAIN GROWERS' GUIDE COUPON

The Grain Growers' Grain Co. Ltd.,
Winnipeg, Man.
I have looked over the list of implements and supplies handled by your Company. Please let me have particulars and prices about

Signed _____
P.O. _____ Prov. _____