

Stop Using Feed For Fertilizer

Whole corn in your animals' droppings indicates that a part of the feed of even a healthy animal is wasted through non-digestion. Grinding the feed fails to save this waste, and the feeder must either let his hogs follow up the steers and eat this wasted grain or be content to realize what little he can from it as fertilizer. Saving a part of this wasted feed by *Improving Digestion* is known as "The Dr. Hess Idea," and back of it are the opinions of our ablest writers.


DR. HESS STOCK TONIC

the prescription of Dr. Hess (M. D., D. V. S.), improves digestion; it contains iron, the greatest of all blood and tissue builders, acts mildly on the kidneys, regulates the bowels, also expels worms and relieves the minor stock ailments. As proof that Dr. Hess Stock Tonic does all these things just show the formula on the label to your family physician. A poor ration well digested is better than a good ration poorly digested. Improved digestion insures more growth, more and richer milk.

Our proposition. You get of your dealer a 25 lb. pail of Dr. Hess Stock Tonic at \$2.00, or 100 lbs. at \$7.00 (smaller quantities at a slight advance). Use it all winter and spring. If it doesn't pay you and pay you well, get your money back. Every pound sold on this guarantee. If your dealer can't supply you, we will.

Free from the 1st to the 10th of each month—Dr. Hess (M. D., D. V. S.) will prescribe for your ailing animals. 96 page Veterinary Book free for the asking. Mention this paper and include 2c stamp.

DR. HESS & CLARK
Ashland, Ohio



DR. HESS POULTRY PAN-A-CE-A. A scientific fowl tonic, prepared by Dr. Hess to make hens lay more eggs. It acts beneficially on the digestive organs, keeps the egg organisms active, contains nitrates to drive out poisons and iron to build up the system. It fattens broilers quickly, helps chicks to maturity, cures minor fowl ailments. Very economical—a penny's worth feeds 30 fowls per day.

1½ lbs. 35c; 5 lbs. 85c; 12 lbs. \$1.75; 25 lb. pail \$3.50.
Duty paid.

INSTANT LOUSE KILLER KILLS LICE

Farnham Farm Oxfords and Hampshire Downs

We are offering very reasonably a number of first-class yearling and ram lambs, by our imported champion ram; also filly ewes of both breeds. Long-distance phone in house; ask Guelph for 152, two rings. **HENRY ARKELL & SON, ARKELL, ONTARIO**

Shropshire Sheep, Shire Horses and Poultry. I have bred very many winners in Shropshires, and never had a better lot of both sexes for sale. Order early. Also a big quality shire filly and White Wyandotte poultry. **W. D. MONKMAN Bond Head, Ont.**
Phone connection.

Hampshire Pigs

Get acquainted with the best bacon hog in existence. Both sexes for sale, bred from imported stock. Write for prices.

J. H. RUTHERFORD
Caledon East, Ont.

Box 62 Long-Distance Phone

Maple Grove Yorkshires ARE EQUAL TO THE BEST.

Present offering: Twenty-five sows bred to farrow from Aug. to Oct. All first-class, bred to No. 1 quality boars. All big, roomy, growthy stock, and ranging from six months to two years old. Eight young boars fit for use; choice long fellows of excellent breeding, and younger pigs of various ages. Pairs not related. Our prices will suit the average farmer, but are consistent with the best quality. Stock shipped C. O. D. and on approval. Correspondence and personal inspection invited. Long-distance phone via St. Thomas.

H. S. McDIARMID, FINGAL, ONTARIO.
Shedden Station, P. M. and M. C. R.

Hillcrest Tamworths

I ship to all parts of Canada and United States. Stock Boars, Bred Sows, and Exhibition Stock. Bell phone. **Herbert German, St. George, Ont.**

A LIFE-LIKE TALE.

Mother—"Johnny, you said you'd been to Sunday school."

Johnny (with a far-away look)—"Yes, mamma."

Mother—"How does it happen that your hands smell of fish?"

Johnny—"I carried home the Sunday-school paper, and the outside page is all about Jonah and the whale."



Maple Villa

Oxford Downs and Yorkshires

Are ideal in quality and type. Present offering is a grand lot of ram lambs for flock headers, also a number of shearing ewes and ewe lambs, sired by imp. Hamptonian 22nd, who is also for sale. Yorkshires of both sexes and all ages. Right good ones. Satisfaction assured.

J. A. CERSWELL

Bond Head P. O., Ont.

Bradford or Beeton Station.

Southdown Rams—Select your flock-header early. Come and see my home-bred stock.

Angus Cattle—Buy an Angus bull to produce steers that feed easily and top the market.

Collies that win at the shows and make excellent workers.

ROBT. McEWEN, Byron, Ont.

SHROPSHIRE BARGAINS AT FAIRVIEW

Choice shearing rams sired by grand champions, and out of the best of dams. We have in the lot flock headers and showing propositions. We guarantee them to be as described.

See representatives at Toronto's Canadian National.

J. & D. J. CAMPBELL, FAIRVIEW FARM, WOODVILLE, ONTARIO

Shropshires and Cotswolds

I am now offering for sale 25 shearing Shropshire rams and 15 shearing ewes, nearly all from imported ewes and ram. Also the best lot of lambs I ever raised. Am fitting some of all ages for showing. Prices very reasonable.

JOHN MILLER, Brougham, Ont.
Claremont Stn., C. P. R.



CATTLE and SHEEP LABELS

Metal ear labels with owner's name, address and any numbers required. They are inexpensive, simple and practical. The greatest thing for stock. Do not neglect to send for free circular and sample. Send your name and address to-day.

F. G. JAMES, Bowmanville, Ont.

American Shropshire Registry Association

Has the largest membership of any live-stock association in the world, and is steadily growing. Life membership \$5.00, no yearly dues. Write for information.

J. M. WADE, SECRETARY, LA FAYETTE, INDIANA



Monkland Yorkshires

I am making a special offering of 50 young bred sows. They will average 200 pounds in weight, and are from 6 to 7 months of age. An exceptionally choice lot, full of type and quality; also a limited number of young boars.

MATTHEW WILSON, FERGUS, ONTARIO

Newcastle Tamworths and Shorthorns

For sale: Choice young sows bred and ready to breed. Boars ready for service; nice things, 2 to 4 months, by imp. boar. Dam by Colwill's Choice. Canada champion boar, 1901-2-3-5. Two splendid young Shorthorn bulls and six heifers—bred. Prices right. Bell phone.

A. A. COLWILL, NEWCASTLE, ONTARIO

Willowdale Berkshires.

For sale: Nice lot of 5 months' sows, one 5 months' boar. Eggs from my famous flock of R. C. R. I. Reds, \$1 per 13. Express prepaid on 5 settings or more. Phone 52, Milton.

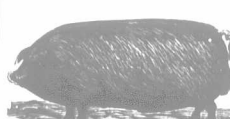
J. J. WILSON, Importer and Breeder, Milton, Ontario, C. P. R. and G. T. R.

PINE GROVE BERKSHIRES

Sold out of young boars. Have a few young sows three and four months old. Price right for quick sale. Milton, C. P. R.

W. W. Brownridge, Ashgrove, Ont.

Duroc - Jersey Swine.



Largest herd in Canada. 100 pigs ready to ship. Pairs and trios not akin; also a few sows ready to breed. Bell phone at the house.

MAC CAMPBELL & SONS, NORTHWOOD, ONT.

ELMWOOD STOCK FARM offers Ohio Improved Chester White Pigs. Largest Choice lot, 6 to 8 weeks old. Pairs furnished not akin. Express prepaid. Pedigrees and safe delivery guaranteed. **E. D. George & Sons, Putnam, Ont.**

SUNNYSIDE CHESTER WHITE HOGS—I am now offering some very choice young things of both sexes, of breeding age. A few Shropshire sheep of both sexes. Also Red Cap cockerels and pullets. **W. E. WRIGHT, Glanworth P. O., Ont.**

QUESTIONS AND ANSWERS Miscellaneous.

EVENING PRIMROSE.

I am sending you a weed in a box. Could you please let me know in next issue what it is? Have a field rather thick with it, which I plowed out of sod a year ago. Field had not been plowed for a number of years, and it was in pasture. Sowed it to peas a year ago last spring, and then disked it in the fall and sowed wheat on it, and this weed with a yellow flower is coming up quite thick now.

P. C.

Ans.—The weed is common evening primrose (*Oenothera biennis*). It is a tall biennial which occurs throughout the country, and can be recognized by its tall, branching habit, its soft, downy, lance-shaped leaves, and its large, showy, yellow flowers, which open in the evening. This weed only grows into a rosette of leaves the first year, consequently it appears only in crops sown in the autumn or on stubble. It sometimes occurs in thin clover fields or meadows. In clover fields the rosettes should be spudded out, or cut off below the crown the first season. The tall, flowering plants should be either cut off below the surface or pulled out before the seeds ripen. On stubble land, to be sown to grain, the plants should be destroyed by cultivation. This weed will not stand cultivation, and if you do not allow it to seed, the plowing of the field this fall, and the fall and spring cultivation, will likely eradicate it. It is not troublesome where a regular rotation and clean cultivation are followed.

WHITE GRUBS—SAWDUST FOR FERTILIZER—CEDAR HEDGE—DUTY ON FARM IMPLEMENTS.

1. We have a field which has been seeded down for four years, and last fall was plowed, and wheat put in one half and corn in the other. The seed came up, but did not do well, and some died off, and, on looking at the roots, found numerous large white grubs. The land is clay loam, and faces the south. They are also in the pasture, and are killing the grass. Please give some way to destroy them.

2. We have a large pit of sawdust on our farm. I would like to know if it is a good fertilizer? It is about fifteen years old.

3. When is the proper time to trim a cedar hedge?

4. What is the duty on farm implements taken from the United States to Canada, and what will be the duty if reciprocity carries?

D. P.

Ans.—1. The insect is the white grub. These grubs are larvae of the May beetles or June bugs, so called from their great abundance in June. The eggs are laid in the ground, and require three years to mature. There are no remedies for white grubs in most crops, but as the eggs are laid in grass lands, it is important that sod not be left down too long, and that grass land which has been seeded for a long time not be planted to corn or potatoes. A short rotation of crops is advisable. Hogs pasturing on rape sown on the ground, the first year out of sod, will often destroy many, and poultry following the plow get many of them. Clover is seldom attacked by these grubs, consequently it is a good crop for infested land.

2. Sawdust would be little use as a fertilizer, but if used as bedding to soak up the liquid animal excrement, it might be applied to the soil along with manure to good advantage.

3. Cedar hedges should be pruned and trimmed in June.

4. Canada's general duty is 20 per cent. on plows, harrows, drills and planters, horse rakes, cultivators, threshing machines, manure spreaders, weeders and windmills; 25 per cent. on wagons, hay loaders, potato diggers, fanning mills, feed cutters, hay tedders and rollers, and 17½ per cent. on harvesters and mowers. The proposed reduction by Canada under reciprocity is 2½ per cent. on wagons, reapers and mowers, and 5 per cent. on the others mentioned, with the exception of weeders, windmills and rollers.