

of com-
on or com-
their de-
l.
of insects—
of insects
toxicity may
y discussed
is. They
possible, to
the insect
natives men-
they would
farmer, but
ous insects,
the farmer
a destroy—
of entomol-
University

ction
potato field
leaving by the
tubers and
importance of
ed by many,
taken from
r after year,
entually lead
toes.
the great op-
on is offered,
plant spread
matter to as-
t have given
most desir-
are free from
from such
rathered and
the following
ed at digging
as an extra
work, but it

labor attached
to the time of
is by prac-
the results
reasonably con-
thods there is
to growen
closely for ex-
These, has
from the main
grand-dads of
future.

ard Feeds
according to
sitation of the
y, is satisfac-
time, Assist-
of Agriculture,
at 250 tons of
a of oil cake
ased. Options
other classes
purchased for
months of Sep-
tember. Dominion
central potato
will be sold to
standard dairy
in accordance
into with the

ing met in se-
t in the United
this meat has
and States Food
In the summer
arrangements
authorities to
ton seed meat,
be the only lot
it will be al-
Canada. Under
committee hopes
its purchases
supply on hand
standard dairy
which is like-
er 1.

has entered a
tue of \$500 im-
a, Brantford
illeged sections



THE CASE TRACTOR.

The work that the Case is capable of doing on the average farm is almost unlimited. For grinding feed, cutting, pumping, also silling and a hundred and one other duties, it has no peer. A popular model is the famous 10-20 Canadian Fairbanks-Morse Co., Limited, is the Eastern Canada distributor of the Case Tractors.



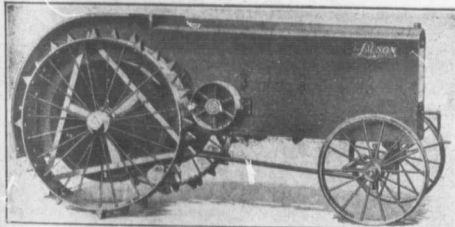
THE FORDSON.

"Yes, I'll be there to do my bit" with the fall plowing. See me work on the Experimental Farm. You'll know me—I'm different!"
FORD MOTOR COMPANY OF CANADA, LTD.
Distributors of Fordson Tractors.



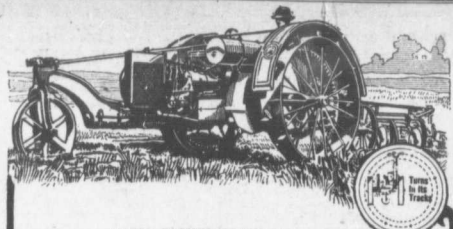
G. S. & M. BEAVER TRACTOR.
24-12 h.p.

The Beaver is a clean cut machine built for continuous heavy work of any kind that is found on the Ontario farm. It operates on kerosene or gasoline and has Waukesha heavy duty tractor motor of four cylinders.
GOLD, SHAPLEY & MUIR, BRANTFORD, ONT.



THE LAUSON—TRACTIVE 15, BELT 25 H.P.

Tractors are profitable only as they give continued satisfactory service on low fuel consumption. For this reason "Lauson" tractors are unexcelled in materials and equipment—dust proof—all gears enclosed.
Magnet—Sumner-Dixie, Cabriolet—Kinsiston Kerosene.
See it and its work at Ottawa.
Distributors for Canada
THE DE LAVAL CO., LIMITED, PETERBOROUGH, ONTARIO.



HAPPY FARMER TRACTOR—12-24 H.P.

Records are not made by luck. "Happy Farmer" has its own reasons for leaving competition behind. One is its remarkable power, compared with its light weight (only 3,700 lbs.). It gets no less than 2,000 lbs. draw bar pull, because it has so much initial weight of its own to propel along, and 88 per cent of that is on the big tractor wheels. "Turns in its own tracks."
RENFREW MACHINERY CO., LTD.,

RENFREW, ONTARIO.

TRACTORS AT OTTAWA.

The tractors illustrated on this page of Farm and Dairy will be at the big International Plowing Match at Ottawa on October 16, 17, and 18. Farmers of Eastern Canada will do well to make it a special point to examine these carefully.

To the Farmers Particularly of Ontario and Quebec

This is a kindly invitation to attend what we believe will be the greatest Tractor Demonstration and Plowing Match ever held in America. With the farm help problem facing us as never before, we specially desire as many farmers as possible to be with us and

Learn What POWER Will Do on YOUR Farm

DATES— OCTOBER 16, 17, 18
Wednesday—Farm Machinery Demonstrations
Thursday—Walking and Riding Plow Competitions
Friday—Tractor and Seed Drilling Competitions

PLACE—DOMINION EXPERIMENTAL
FARM, Ottawa, Ontario

RATES—

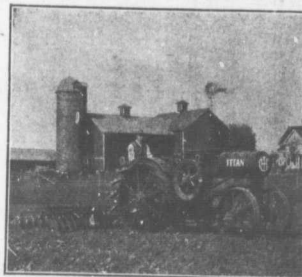
Special rate of fare and one-third. If over 50 miles, buy a single ticket with certificate, and return fare can be secured at Ottawa for one-third fare plus 26c.

Buy your ticket to Ottawa, where car service every 10 minutes will take you to the Farm.

A programme with list of all prizes gladly sent on request.

Red Cross lunch served on grounds.
PLAN NOW TO ATTEND.

J. LOCKIE WILSON - Managing Director
Parliament Buildings, Toronto, Ontario



THE I. H. C. TRACTOR.

Known the world over, wherever good farm machinery is used. The I. H. C. line of implements covers every operation in every class of farm work. Our different sizes of machines will show you what they can do at Ottawa, October 16th, 17th, and 18th.
INTERNATIONAL HARVESTER CO. OF CANADA, LIMITED.
HAMILTON, ONTARIO.



"AVERY 8-16 TRACTOR" PLOWING IN STUBBLE.

Mr. Gordon Plimcombe, of Strathroy, who owns an 8-16 says: "If you have an Avery you have an engine when you want one. It does all the heavy work." Send for catalogue to
R. A. LISTER & CO. (CANADA), LTD., TORONTO.



THE NEVER-SLIP.

The Never Slip creeps on a steel track. It will not pack the soil and is so conveniently handy that it can be turned in its own tracks within an eleven-foot circle. Learn more about it when you are at Ottawa. It is the coming type of tractor.

MONARCH TRACTOR CO., LTD.,

BRANTFORD, ONTARIO.