

Miners Wanted

TO CHEW

PAY ROLL

Plug Tobacco

WANTED.

At the several collieries of the Dominion coal co. Limited, skilled coal miners and mine laborers.

Apply on the works Or by letter

Dominion Coal Company, Ltd

THE GARLOCK PACKING CO.

Sole

Manufacturers.



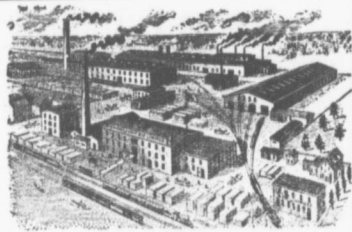
GARLOCK'S STEAM, WATER and AMMONIA
—PACKINGS.—
ASBESTOS SECTIONAL COVERINGS.

Hamilton, Ontario.

Used by Collieries in Lancashire, Staffordshire & Yorkshire

'XTERRA' COLLIERY LAMP OIL.
For Marant, Muzzle Deflector or Closed Lamp

PURE WHITE FLAME LOW PRICE
E. WOLASTON, Dutton St MANCHESTER
Sole Representatives for Canada, AUSTEN BROS.,
Halifax, N. S.



—MANUFACTURERS OF—

RAILWAY
STREET and
MINING

CARS,

CAR WHEELS Church Pews,
FORGINGS & Fittings for Stores, Schools, &
CASTINGS A SPECIALTY.

Large Stocks of Foreign and Domestic Lumber on Sale.

Rhodes, BUILDING MATERIALS
Curry & co., Ltd. GENERAL

Branch ROBBIE STREET,
HALIFAX, N. S.

AMHERST, N. S.

INTERCOLONIAL RAILWAY

On and after Sunday, June 24th 1900 trains
run daily, Sunday excepted, as follows—

— TRAINS LEAVE STELLARTON—

No 144 Mixed for Hopewell	5.05
No 79 Mixed for Trenton	6.30
75 Mixed for Hopewell	6.55
18 Express for Halifax, and St. John	7.40
21 Mixed for Pictou Landing	7.40
62 Mixed for Pictou	7.45
55 Mixed for Mulgrave	8.15
19 Express for Sydney	10.55
22 Mixed for Pictou	11.00
66 Mixed for Trenton	12.35
35 Express for Sydney	12.50
39 Express for Halifax and Montreal	12.55
140 Mixed for Pictou	12.55
101 Mixed for Pictou Landing	12.59
23 Mixed for Hopewell	12.10
65 Mixed for New Glasgow	12.40
36 Express Halifax and St. John	12.45
17 Express for New Glasgow	12.15
66 Express for Pictou	12.15

— TRAINS ARRIVE AT STELLARTON

79 Mixed from Hopewell	6.30
78 Mixed from Trenton	6.45
61 Express from Pictou	7.30
18 Express from New Glasgow	7.35
21 Mixed from Hopewell	7.35
55 Mixed from Trenton	8.00
28 Mixed from New Glasgow	10.35
27 Mixed from Pictou	10.40
46 Mixed from Mulgrave	12.15
19 Express from Halifax and St. John	12.45
129 Mixed from Pictou	12.55
25 Express from Halifax, St. John, Quebec	12.40
30 Express from Sydney	12.40
22 Mixed from Pictou Landing	12.15
77 Mixed from Hopewell	12.45
66 Express from Pictou	12.45
66 Express from Sydney	12.55
66 Express from New Glasgow	12.55
17 Express from St. John and Halifax	12.10

All trains are run by Atlantic Standard Time 1900 four
O'clock is mid-night, Montreal, N. B. June 20th, 1900