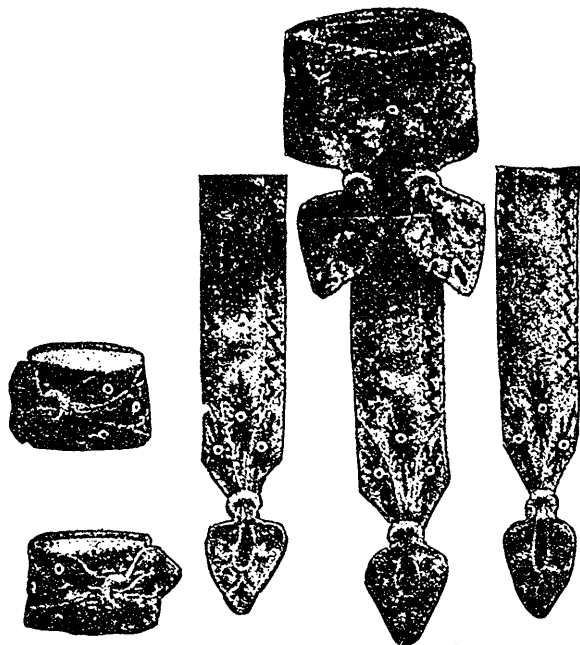


Waist Set Design No. LN2132.

A very jaunty waist decoration is shown by this design. It comes stamped on tan, blue, pink, green, red, or white linen. Besides the collar and cuffs, three tabs are provided, one for the center front and one for each side, starting from

the shoulder. The collar finishes with two tab ends passing through large rings, and the cuffs and tab fronts are finished in the same way. Each piece is first braided with a narrow, flat linen braid of the same color as the material, couched down with Roman Floss, Red Corticelli B. & A. Asiatic Dye 2064. Between the two rows of braid a fancy Cross stitching is worked with Roman Floss, Green 2834. The sunbursts have a ring center, and the rays are worked alternately with Orange 2639 and Red 2064, and Green 2834 and Red 2064. The latter combination is used in the central figure, and the former in the ones on each side. Dots of orange and red and lines of green finish the



WAIST SET DESIGN NO. LN2132.

tabs. The embroidery completed, each piece is lined and then passed through large Battenberg rings. (Easy.)

Materials: Roman Floss, 2 skeins each Corticelli B. & A. Asiatic Dye 2064, 2834; 1 skein 2639. Seven Battenberg Rings No. 4005. One and one half dozen rings Cream No. 135. One dozen yards braid No. 2470. Dealers can furnish stamped linen of this design in tan, blue, pink, green, red, or white. See note, page 232.

Crocheted Silk Neck Ruche.

White Corticelli Shetland Silk Floss was used for making this lovely neck ruche. For the foundation three strands of the silk are used, and for the covering and ends, one strand.

For the foundation begin with 7 chain. *1st row*—Loop crochet, insert the hook in the first, wind the silk 3 times over the first finger of the right hand. Repeat 6 times more, making in all 7 stitches in first row. *2d row*—Draw the

It is impossible to obtain good results with inferior Silk