

..COAL..

DOMINION COAL COMPANY, LIMITED

Glace Bay, C.B. Canada

MINERS OF

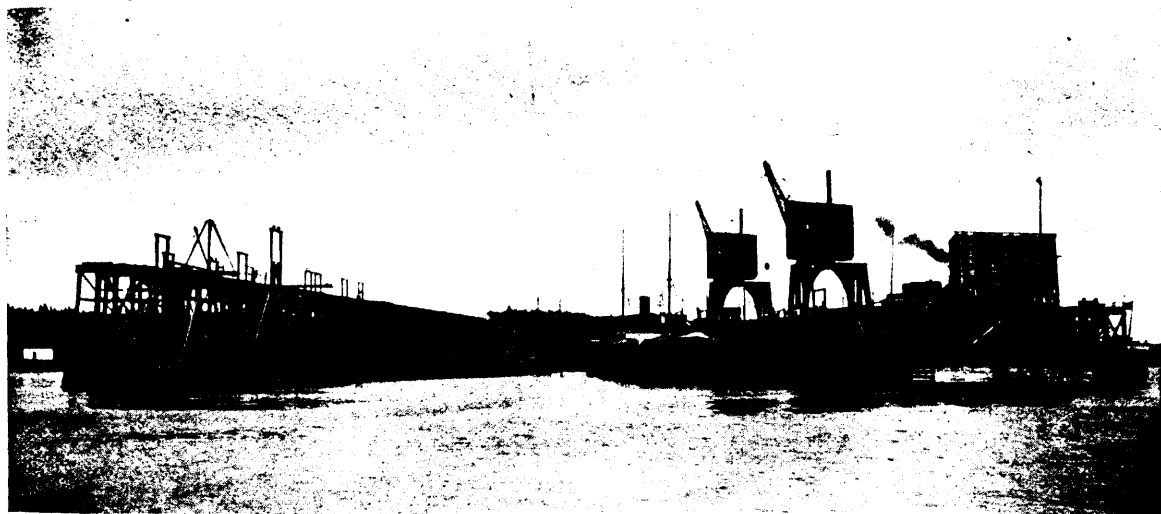
BITUMINOUS COALS

The celebrated "Reserve"
coal for Household use.

"INTERNATIONAL" GAS COAL

And the best steam coal from its
Collieries on the Phalen seam.

Yearly Output 3,000,000 Tons.



International Shipping Piers of the Dominion Coal Co. Limited, at Sydney, C.B.

Shipping facilities at Sydney and Louisburg, C.B., of most modern type. Steamers carrying 5,000 tons loaded in twenty-four hours. Special attention given to quick loading of sailing vessels. Small vessels loaded with quickest despatch.

Bunker Coal

The Dominion Coal Company has provided unsurpassed facilities for bunkering ocean-going steamers with dispatch. Special attention given to prompt loading. Steamers of any size are bunkered without detention.

By improved screening appliances, lump coal for domestic trade is supplied, of superior quality.

APPLICATIONS FOR PRICES, TERMS, &c., SHOULD BE MADE TO

ALEXANDER DICK, General Sales Agent, GLACE BAY, C.B.

KINGMAN & CO., Agents, Custom House Square, Montreal, P.Q.

M. R. MORROW, Agent, 50 Bedford Row, Halifax, N.S.

R. P. & W. F. STARR, Agents, St. John, N.B.

HARVEY & CO., Agents, St. Johns, Nfld.

C. SHIELDS, 2nd Vice-President and General Manager.