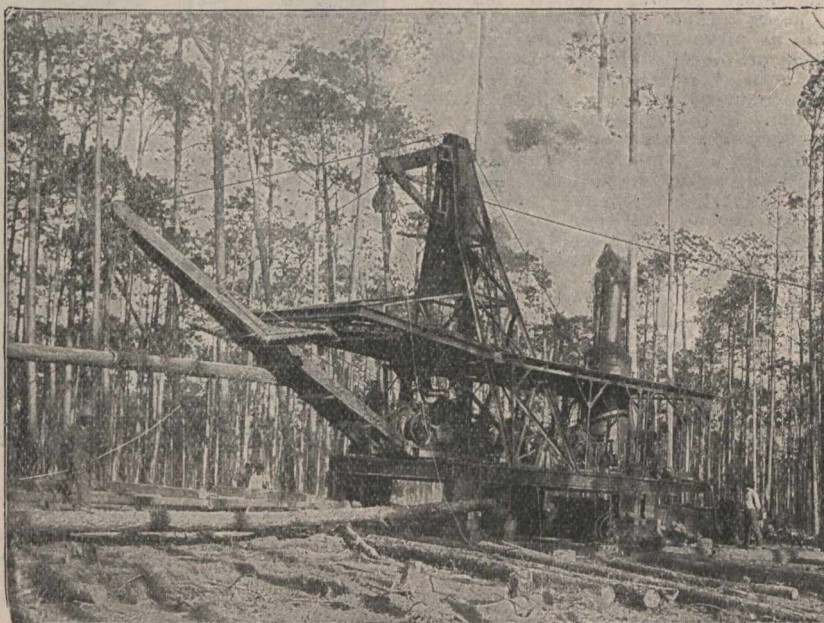


Results Are What Count

A Combined Skidding and Loading Machine that will clear up the largest area at a setting and can be moved and set up ready for business in the shortest possible time will get the best results

The latest Russel Machine has some distinct improvements that save time and trouble, consequently money. Note the new method of suspending the skidding sheaves. They are hung from a vertically hinged jib or triangle the outer end of which is guyed by two lines, one on each side, which are power tightened and can be set while skidding lines are going out. The guy lines lead back so they do not interfere with either skidding or loading.



The uppermost leg of the jib has a spring connection to the tower, reducing shocks. All strains due to skidding are absorbed by the guy lines. The swinging boom is operated by wire ropes passing through sheaves suspended from a steel frame projecting from the tower and leading to two drums on loading engine, controlled by one lever. Machine is raised or lowered by hydraulic or patented geared jacks.

Built for 2 or 4 lines with stiff or swinging boom. Constructed entirely of steel, except loading boom.

**IS WITHOUT QUESTION THE STRONGEST AND FASTEST MACHINE OF THE DAY
LOGGING CARS AND DUMP CARS**

RUSSEL WHEEL & FOUNDRY CO.
Detroit, Mich., U.S.A.