

BREAKING

When you are buying an Engine why not get a machine that can be used for all farm power purposes and at all seasons of the year ?

The Ideal Farm Power is The **HART-PARR KEROSENE TRACTOR** The Great General Purpose Engine

The Hart-Parr Uses 11 Cent Kerosene for Fuel



THRESHING

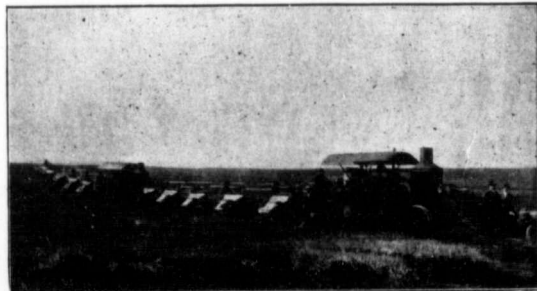
The Hart-Parr Uses 11 Cent Kerosene for Fuel

The Hart-Parr is the only tractor that can be used on plowed ground without injurious packing of the soil. The time saving, labor saving, money making substitute for steam and horse power. A tractor that requires no steaming up, that never gets tired or overheated, and that can work from one to twenty-four hours a day, six days in every week. The farmer of the Northwest can, with a Hart-Parr start breaking for flax as soon as his oats are seeded and break fifteen to twenty acres per day, and by putting discs behind the plows he can disc it at the same operation, and so on. You do your work at just the right time and earlier than your neighbors who use horses and get a larger yield and a more certain crop. It will pull as many binders as 7 you can attach behind it and when threshing time comes it will drive a grain separator as steady as any steam tractor at the same time having an abundance of power in the belt. And then there is the fuel bill. Here is where the Hart-Parr again claims superiority over all other forms of power. It actually saves its owner from 40 per cent. to 60 per cent of his fuel bill. Kerosene is the one easily obtained and cheap fuel in all localities, and the cheapest grades of kerosene can be used successfully in all Hart-Parr engines. And, again, remember that a Hart-Parr saves you the expense of a fireman, does away with all water and fuel men and teams, and that your expenses do not start until engine is in actual operation and that they stop the moment the engine stops. If you are looking for a dependable power, an economical power and a durable power, investigate the merits of the Hart-Parr Kerosene Tractor. A kerosene tractor that is as nearly perfect as human brains and human hands can devise. The outgrowth of years of experience as manufacturers. The product of the oldest and largest gas tractor factory in the world. Let us tell you what this Modern Farm Horse can do for you and your farm.

**HART-PARR Co.**

NO. 30 MAIN STREET  
PORTAGE-LA-PRAIRIE, MANITOBA  
The Chapin Company, Calgary, Alta. Sales Agents for Alberta

When you buy a Hart-Parr Kerosene tractor you have the satisfaction of knowing that you have the best, most up-to-date, and dependable power that money can purchase



HARVESTING