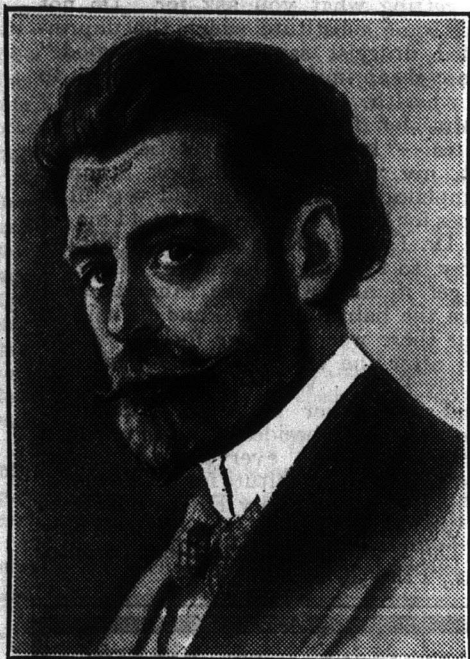


CAN THIS MAN READ YOUR LIFE?

The rich, poor, exalted and humble seek his advice on Business, Marriage, Friends, Enemies, Changes, Speculation, Love Affairs, Journeys and all events of Life.

MANY SAY HE REVEALS
THEIR LIVES WITH
AMAZING ACCURACY.

Free Test Readings will be sent for a short time to all Winnipeg "Western Home Monthly" Readers.



Has the veil of mystery that has so long shrouded the ancient sciences been raised at last? Can it be that a system has been perfected that reveals with reasonable accuracy the character and disposition of an individual, and so outlines the life as to assist in avoiding errors and taking advantage of opportunities?

Roxroy, a man who has for twenty years been delving into the mysteries of the occult, making a scientific study of the various methods of reading the lives of people, seems to have reached a higher round in the ladder of fame than his predecessors. Letters are pouring into his office from all parts of the world telling of the benefits derived from his advice. Many of his patrons look upon him as a man gifted with some strange, mysterious power, but he modestly asserts that what he accomplishes is due alone to an understanding of natural laws.

He is a man of kindly feelings toward humanity, and his manner and tone immediately impress one with his sincere belief in his work. A huge stack of grateful letters from people who have received readings from him adds to other convincing proof as to his ability. Even astrologers and palmists admit that his system surpasses anything yet introduced.

The Rev. G. C. H. Hasskarl, Ph. D., of St. Paul's Evangelical Lutheran Church, in a letter to Prof. Roxroy, says: "You are certainly the greatest specialist and master of your profession. Everyone consulting you will marvel at the correctness of your detailed personal readings and advice. The most sceptical will consult you again and again after corresponding with you once."

If you wish to take advantage of Roxroy's generous offer and obtain a free reading, send your date, month and year of birth, state whether Mr. Mrs. or Miss, and also copy the following verse in your own handwriting:—

I have heard of your power
To read people's lives,
And would ask what for me
You have to advise?

Be sure to give your correct name, birth date and address and write plainly. Send your letter to ROXROY, Dept. 14A, No. 177A Kensington High-street, London, W., England. If you wish, you may enclose 10 cents (Canadian stamps) to pay postage, clerical work, etc. Do not enclose coins or silver in letters.

medallions in combination with eyelet designs. The scalloped edges and the eyelet patterns are worked with white cotton, also the ring enclosing the medallions. The rest of the design is worked in colored silk. The combination of the two kinds of material is most effective, and the idea is one which has been adapted from embroideries that are brought to us from abroad. In one of the designs illustrated, LC9116a, a Dresden wreath is used in each one of the medallions, the rose being worked in pink, the daisies in lavender, while the centres of all the flowers are worked in a pale yellow. All the portions of the Dresden wreath are worked in solid embroidery. Two skeins of white mercerized cotton,

ed with Japanese gold thread and the red dragon figures are outlined with Roman floss. This makes a very handsome and showy centrepiece with very little work. Five skeins of Caspian floss 2181, 2 skeins Roman floss 2134, and 1 skein Japanese gold thread are required for working.

Another very handsome centrepiece in the 28-inch size is in l'Art Noveau style with the flowers tinted in shades colored linen. The pink flowers are worked on the edges in heavily padded satin stitch, outlined on the inner edge with black. The leaves of the pink flowers are worked in long and short stitch with green. The blue flowers are couched on the edges with blue, outlined on the inner edge with black, and the dots in all the flowers



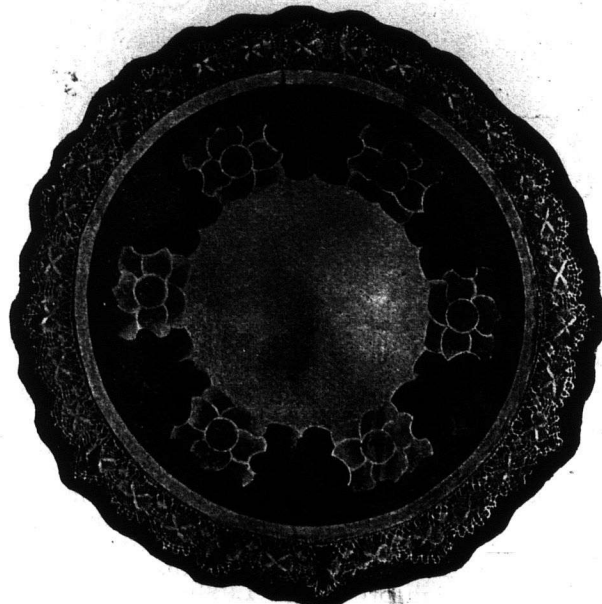
A Red Dragon Design suitable for either Library or Dining Room. L. C. 9117 (28 inch).

size D, 3 skeins size E, and 1 skein each of Filo selle 2470, 2471, 2520a, 2621, and 2631 are used for working this centrepiece. It comes only in 22-inch size and is sold at sixty cents.

Another most attractive centrepiece upon which but very little embroidery is required is the red dragon design LC9117. This comes tinted in red and green upon a natural ecru linen. This centrepiece is furnished in 28-inch size only, for eighty cents, and is admirable for either dining room or library purposes. The edge is worked in a heavy buttonhole stitch with Caspian floss in green. All parts of the green tinting on the centrepiece are couch-

are worked in heavily padded satin stitch with black. The leaves of the blue flowers are also couched on the edges with green, and the band of of pink and blue on a heavy cream-green which runs around the edge of the design is couched in the same manner.

The centrepiece is furnished on tinted linen for seventy-five cents, it requires 6 skeins of rope silk 2222, 5 skeins 2622; 6 skeins Roman floss 2671 and 2622; 6 skeins Roman floss 2671 and 2622, 4 skeins 2000, and 1 skein 2222 for working, and 3½ yards Cluny lace.



A handsome Centrepiece in l'Art Nouveau Style. L. C. 9106.



Listening to the Children's Stories.



We want the Home Monthly.

Melancholy and Mental Depression

Also Known as Low-Spirits and "The Blues," Are Almost Invariably Caused By Indigestion and Stomach Derangement.

Chronic melancholy is a symptom frequently encountered in the victims of dyspepsia and indigestion. Defective blood nutrition or anaemia appears to be the physical state with which the great majority of cases of melancholy and mental depression are connected, and to which all modes of treatment are directed. Powerful and permanent and depressing moral and mental emotions act as effectively in arresting healthy digestion and alimentation as the eating of injudicious food, or the use of nourishment under circumstances such as the respiration of impure air, or indulgence in intemperate tendencies, which render proper assimilation of food impossible.

But while depressing mental emotions may cause disturbed digestion, on the other hand, dyspepsia may, in turn, cause mental depression, so that cause and effect may be transposed. Melancholy or "the blues" should not be regarded as a distinct and independent affection, as it is almost invariably traceable to, and dependent upon, some disorder of the digestive system.

The victims of this distressing condition present not only the usual symptoms of indigestion or nervous dyspepsia, but also a long train of symptoms of a peculiarly melancholic and morbid character, such as extreme increase of nerve-sensibility, palpitations, strange internal sensations, which simulate many other diseases, together with an exaggerated uneasiness and anxiety chiefly concerning the health. They imagine they have all the diseases known to Pathology, and are great pessimists, prone to look on the dark side of life. They are easily annoyed by small things, which if their health and digestion were good, would never bother them; and they feel constantly irritable, have dark forebodings, and fear the approach of some imaginary evil, impending disaster or calamity.

If they experience indigestion-pains in the heart region, they think it is heart disease; uneasiness in the chest means consumption, while the various other fugitive aches and pains distributed over the system they imagine to be symptoms of some fatal organic disease.

Every one of these morbid symptoms depend upon a disturbed state of the digestion, and for the removal and cure of this condition, there is no better remedy in existence than Stuart's Dyspepsia Tablets. They get right at the seat of the trouble, cure the dyspepsia, and remove the cause. Every particle of food in the stomach is thoroughly and properly digested, with the result that the blood, which owing to a long-continued indigestion, mal-absorption, mal-nutrition and mal-assimilation of food, is in a thin, anaemic condition, is rapidly built up and improved in quality—this improvement progressing along with the increased power of the stomach to properly digest its food through the aid-giving and toning-up properties of these powerful little digestive tablets; so that the melancholic and depressive symptoms disappear along with the dyspepsia.

Don't allow yourself to be overcome with "the blues," but secure a box of Stuart's Dyspepsia Tablets at once from your druggist, and begin taking them; also send us your name and address for free sample package. Address, F. A. Stuart Co., 150 Stuart Building, Marshall, Mich.