

portions in graduated sizes and gathered at their upper edges, which should be sewed to the waist along the upper part of the

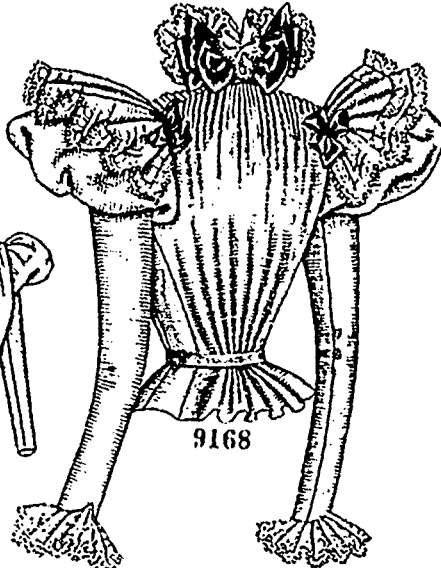
measures eleven inches as described, a pair of sleeves will require two yards and three-eighths of material twenty-two inches wide. Price of pattern, 5d. or 10 cents.



Front View.



9168



Back View.

LADIES' BLOUSE-WAIST, WITH FITTED BODY-LINING.

(For Description see Page 656.)

arm's-eyes. The cap flares to give the fashionable effect of height and breadth.

Many plain sleeves will be improved by these caps, which may match or contrast with the sleeve.

Pattern No. 1355 is in one size only. To make a pair of triple sleeve caps requires two yards and three-eighths of goods twenty-two inches wide. Price of pattern, 3d. or 5 cents.

LADIES' TWO-SEAM DRESS SLEEVE. (TO BE FINISHED PLAIN OR FANCY AT THE WRIST.)

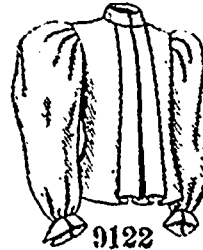
(For Illustrations see Page 661.)

No. 1332.—This sleeve, which is pictured made of dress goods, is shaped with two seams and has fulness at the top disposed in unusually graceful folds by gathers at the upper edge and three deep upturning plaits in the upper portion at the outside seam. To the wrists are joined up pointed tabs that flare over a lace frill, and along the top of the frill, at the inside of the sleeve, is arranged a twisted ribbon that is drawn out between the tabs and bowed at the inside of the arm, the effect being very pretty. A coat-shaped lining supports the sleeve, which may be plain at the wrist, if preferred. Loosely-woven canvas and muslin cloth over silk, and also Summer silks, velvet and heavier goods will make up with equal becomingness in this sleeve; a wrist frill of lisse, point d'Alençon or Mechlin lace three or four inches wide, is the most stylish completion. Sleeves are cut from the same material as the bodice to which they belong and often trimmed to correspond.

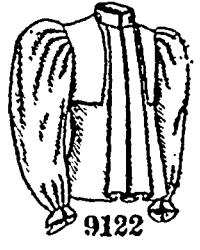
We have pattern No. 1332 in even sizes for ladies from ten to sixteen inches, arm measure, measuring the arm about an inch below the bottom of the arm's-eye. For a lady whose arm

wrinkle the sleeve in mousquetaire fashion and gathers at the top cause the sleeve to stand out slightly under a gathered ruffle cap that gives the desired broad effect. The wrist may be plain or in two scrolls, or the sleeve may be made in three-quarter length. A lace frill provides a pretty finish for the lower edge in either length.

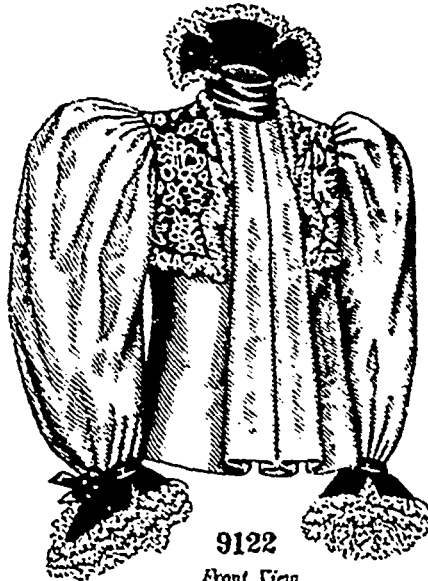
Organdy or



9122



9122



9122

Front View.



9122

Back View.

LADIES' TEA-JACKET, WITH BOLEROS THAT MAY BE PLAIN OR FANCY.

(For Description see Page 657.)

plain embroidered or printed chiffon will be made up over glacé taffeta in sleeves like this and the ruffle cap may be of lace or