

## Oceanic Steamships.

## ALLAN LINE,



UNDER CONTRACT with the Government of Canada for the conveyance of the CANADIAN and UNITED STATES MAILS.

## 1878. Summer Arrangements. 1878.

This Company's Lines are composed of the undernoted First-class, Full-powered Clyde-built, Double-Engine, Iron Steamships:—

Tons.		
Sardinian.....	4100	Lt. J. E. Dutton, R.N.R.
Circassian.....	3400	Capt. J. Wylie
Polynesian.....	4100	Capt. Brown
Sarmatian.....	3600	Capt. A. D. Aird
Hibernian.....	3434	Lt. F. Archer, R.N.R.
Caspian.....	3200	Capt. Trocks
Scandinavian.....	3000	Capt. R. S. Watts
Prussian.....	3000	Capt. J. Ritchie
Austrian.....	2700	Capt. H. Wylie
Nestorian.....	2700	Capt. Barclay
Moravian.....	2650	Capt. Graham
Peruvian.....	2600	Lt. W. H. Smith, R.N.R.
Manitoban.....	3150	Capt. McDougall
Nova Scotian.....	3200	Capt. Richardson
Canalman.....	2600	Capt. McLean
Corinthian.....	2400	Capt. Menzies
Acadian.....	1350	Capt. Cabel
Waldensian.....	2800	Capt. J. G. Stephen
Phœnician.....	2800	Capt. Scott
Newfoundland.....	1500	Capt. Mylins

The Steamers of the LIVERPOOL MAIL LINE, sailing from Liverpool every THURSDAY, and from Quebec every SATURDAY (calling at Lough Foyle to receive on board and land Mails and Passengers to and from Ireland and Scotland), are intended to be despatched

## FROM QUEBEC:

Scandinavian.....	8th June
Polynesian.....	15th "
Sarmatian.....	22nd "
Circassian.....	29th "
Moravian.....	6th July
Peruvian.....	13th "
Sardinian.....	20th "

## Rates of Passage from Quebec:

Cabin, (according to accommodation)	\$70 & \$80
Intermediate.....	\$40
Steerage.....	\$25

An experienced Surgeon carried on each Vessel. Berths not secured until paid for.

Through Bills Lading granted in Liverpool, and at Continental Ports, to all points in Canada, via Halifax and the Intercolonial Railway.

For Freight or other particulars, apply in Portland to J. L. FARMER; in Quebec to ALLANS RAE & Co.; in Havre to JOHN M. CURRIE, 21 Quai d'Orleans; in Paris to GUSTAVE BOSSANGE, 16 Rue du Quatre Septembre; in Antwerp to AUG. SCHMITZ & Co., or RICHARD BENS; in Rotterdam to RUY & Co.; in Hamburg to C. HUGO; in Bordeaux to JAMES MOSS & Co.; in Bremen to HEINR. RUPPEL & SONS; in Belfast to CHARLEY & MALCOLM; in London to MONTGOMERIE & GREENHOUSE, 17 Gracechurch Street; in Glasgow to JAMES & ALEX. ALLAN, 70 Great Clyde Street; in Liverpool to ALLAN BROTHERS, James Street; in Chicago to ALLAN & Co., 72 La Salle Street.

H. & A. ALLAN,

Corner of Youville and Common Streets.

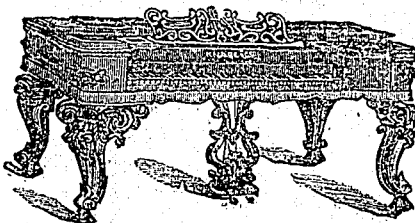
ESTABLISHED 1860.

## Laurent, Laforce &amp; Co.

225 Notre Dame St., Montreal, Canada,

SOLE AGENTS FOR THE

## Wm. Knabe &amp; Co. PIANOFORTES.



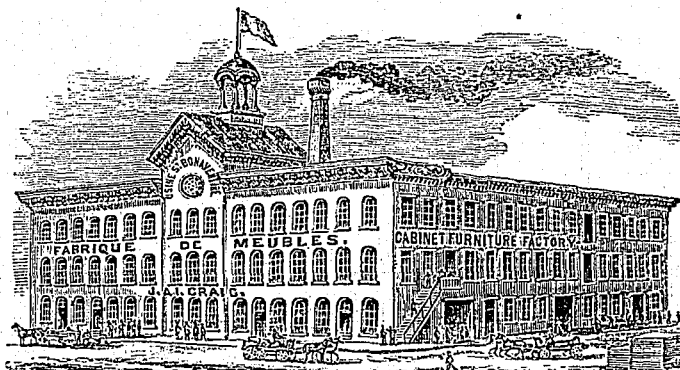
The Judges at the Centennial Exhibition pronounced the KNABE PIANOS to be the best exponents of the Art of Piano Making, and fully entitled to the leading position, combining all the requisites of a perfect Instrument in the highest degree; power, richness and singling quality of tone, ease and elasticity of touch, effectiveness of action, solidity and originality of construction and excellence of workmanship. The Knabe Award is not confined to any single style of instrument, but comprises ALL FOUR STYLES and stands unqualified by phrases indicative of mediocrity. Nor were the Judges content to recognize only a few good qualities, for they especially commend ALL THE ELEMENTS OF MERIT which is possible for the best Pianoforte to possess.

Messrs. Laurent, Laforce & Co., have reduced their prices on these excellent instruments to suit the times.

Call and try them and you will buy no other.

## ST. BONAVENTURE MANUFACTORY.

Furniture Retail at Wholesale Prices.



The proprietors of this establishment have just opened for the benefit of the public a retail store at No. 438 Notre Dame Street, where purchasers can procure a grand variety of goods at wholesale prices. The goods on hand are as follows:—  
Bedroom Furniture, Black, \$25.  
Bedroom Furniture, Marble Top, \$35.  
Bedroom Furniture, Ash and Walnut, \$18.  
Bedroom Furniture, Softwood, \$15.

CRAIG &amp; CO.

WILLIAMS SINGER  
SEWING MACHINE

15

The most popular Machine in the Market;  
Has a larger sale than any other Canadian Machine, and is universally admired by every lady who has ever had the pleasure of using one.

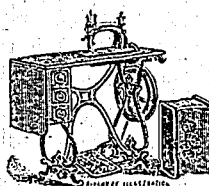
Don't buy a Machine until you have given it a trial.

HEAD OFFICE: 347 NOTRE DAME STREET,  
MONTREAL.

D. GRAHAM,

Managing-Director.

## GUELPH SEWING MACHINE CO.



The OSBORNE SEWING MACHINES having been awarded both Centennials Medals and Medal in the Canadian award at the International Centennial Exhibition, Philadelphia, last year, as well as having been invariably awarded First prizes wherever exhibited since they were put in the markets, we can with every confidence warrant them as First-Class Machines in every respect.

Inspection and trial asked. Price low. Terms liberal. Satisfaction guaranteed.

WILKIE & OSBORNE, Manufacturers, GUELPH, ONT., CANADA