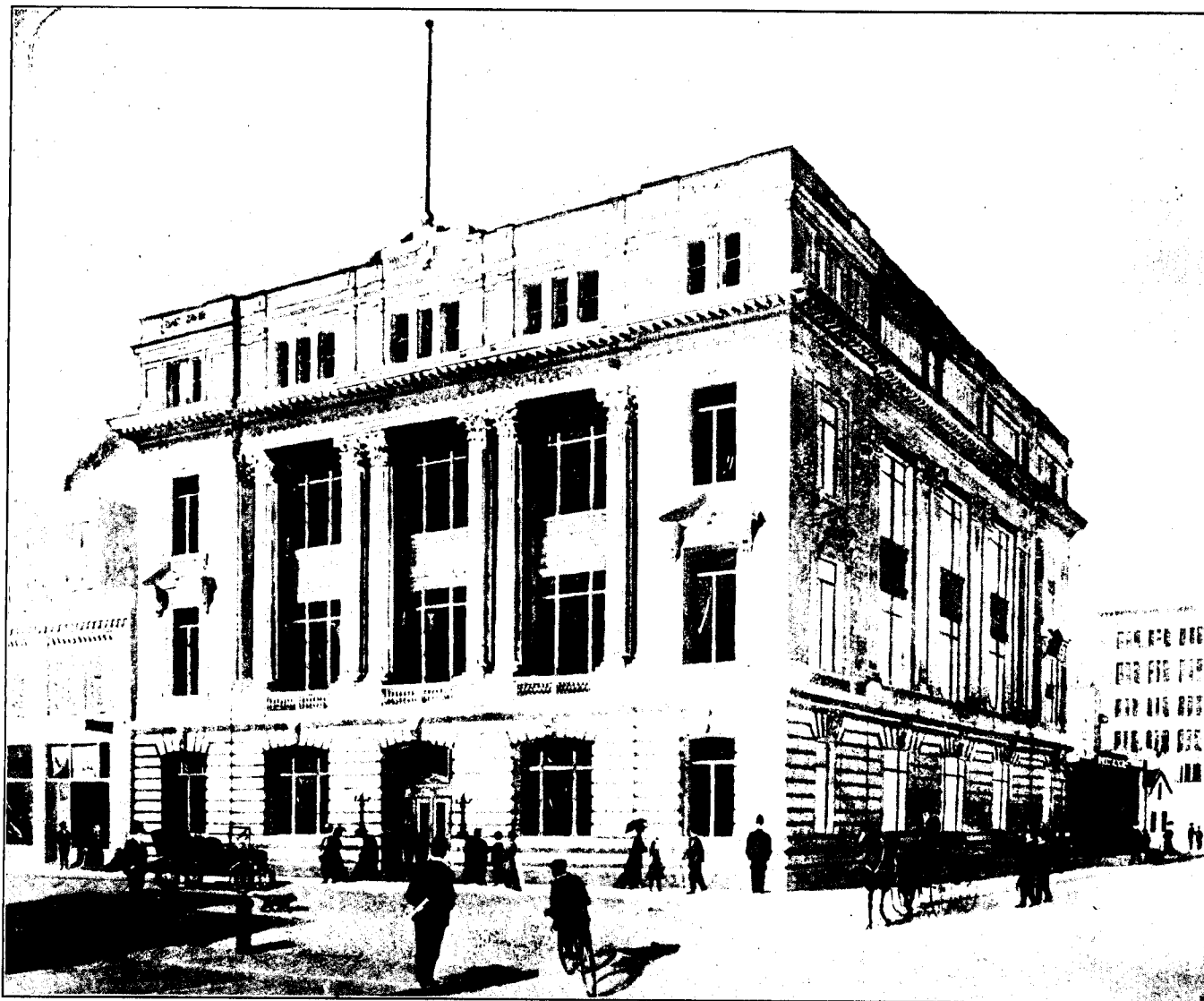


Kootenay Marbles

ARE USED EXCLUSIVELY IN THE CONSTRUCTION OF THIS BUILDING



JOHN D. ATCHISON,
Architect.

THE GREAT WEST LIFE INSURANCE BUILDING, WINNIPEG

C. W. SHARPE & SON,
Contractors.

Kootenay Marbles are Non-Absorbative, therefore don't Stain.

Kootenay Marbles are Close Grained, therefore Sanitary.

**Selected by the Architect and Board of Directors OVER ALL COMPETITORS
Because of their NON-ABSORBATIVE AND WEATHER RESISTING QUALITIES.**

SUPPLIED BY

THE CANADIAN MARBLE WORKS, LIMITED

Quarries and Mills at Marblehead, B.C.
(P.O. LARDO, B.C.)

Main Office, Nelson, B.C.
SAM. J. GORMAN, Man. Dir.

We own and operate the *Largest and Best Equipped* Marble Quarries in Canada. *Kootenay Marbles*, because of their *close grain*, are *non-absorbative*, therefore *don't stain* and are *perfectly sanitary*. We have all *varieties and colors* for both *exterior and interior* work, with *beautiful contrasts* for *decorative purposes*. Especially adapted to *Bank and Public Building* interiors.

McGill University tests show following results: *Compression*, over 10,000 lbs. per square inch; *Absorption* (48 hrs. immersion), 4-5 of 1 per cent.; *Analysis*, Calcium Carbonate, 99.4 per cent.

Estimates cheerfully given on Architects' specifications. Samples upon application.

District Sales Agencies: Gorman, Clancey & Grindley, Ltd., Edmonton and Calgary, Alberta; Dunn Brothers, Winnipeg, Man.