

situated on the posterior or postero-lateral aspect, and which from its long subjection to the abnormal conditions is often dense and thickened. Pressure under such circumstances accomplishes but little in replacing the protruded bowel in the abdominal cavity, and hence sundry expedients have been resorted to in order to bring about the proper replacement of the intestine.

Efore, however, proceeding to the surgical treatment of such slipped or slidden hernias, a word or two concerning their recognition may not be out of order. They are more common on the left side and in males in middle or advanced life. It is difficult to determine their nature before the required surgical intervention. Usually they present themselves with the history, in its early period, of reducibility which is not always amenable to a truss or to taxis, and which soon passes into a permanent irre-

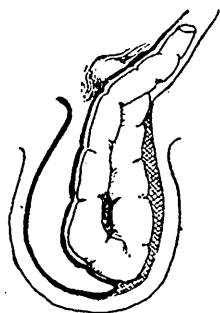


FIG. 1.—Showing the Large Intestine behind the Peritoneum.

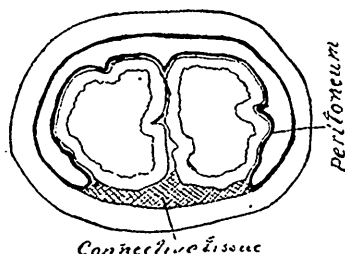


FIG. 2.—Showing the Retroperitoneal Large Intestine in a cross section of the hernia with its incomplete sac.

ducible condition. They are usually scrotal when irreducible, and sometimes one can, in a left-sided hernia, suspect its being one of the sigmoid flexure or descending colon, from the inability to inject per rectum but a small quantity of fluid, or because by such an injection the bowel in the scrotum distends appreciably. So uncertain, however, is the diagnosis, and so often is the slipped large bowel associated with small intestine or omentum in the sac, that time is only misspent in endeavoring to solve the problem except with the scalpel. Only it is to be remembered that in a large irreducible hernia, whether on the left or right side, but particularly on the left side on account of its greater frequency, it is wiser to make the incision into the sac well to the inner side of the scrotal swelling, and not to carry it too low down, so as to avoid the accident of coming down to and incising an unrecognized bowel deprived of its tell-tale peritoneal protec-