

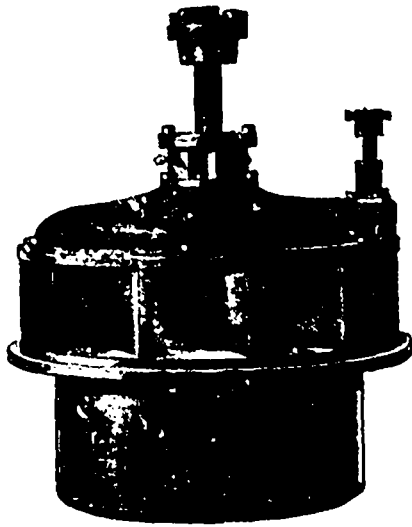
ROE & GRAHAM

Iron Founders and Machinists

OTTAWA,

WATER WHEELS, ENGINES AND MILL
MACHINERY A SPECIALTY . . .

ONT.



The . . .
**Standard
Water..
Wheel**



Cut Showing Wheel Removed from Case.

Made in sizes from 6 inches to 84 inches diameter. Wheel One Solid Casting. 84 per cent of power guaranteed
In Five Pieces. Includes whole of case, either register or cylinder gate.

Water put on full gate or shut completely off with half-turn of hand wheel, and as easily governed as any engine.

Write for Estimates, References and Catalogues of the STANDARD WATER WHEEL, also Milled and Rough Gearing of every size and description; Engines, Mill Machinery and Electric Power Plants; Latest Improved Band Saw Brazing Tables; Shears and Gummers, also Surface Grinder for Shingle Saws.

A. R. WILLIAMS,

Manufacturer of and Dealer in

Machinery and Power

Iron Working Machinery.

Wood Working Machinery

Saw Mill Machinery.

Shingle Mill Machinery.

Veneer Mill Machinery.

Mining Machinery.

Engines and Boilers, Motors and Dynamos, Fans,
Blowers and Dry-Kilns.

MILL SUPPLIES OF EVERY DESCRIPTION

Office and Works:

Soho Machine Works, TORONTO, Ont.

Branch Warehouse

305 St. James St., MONTREAL, Que.

