

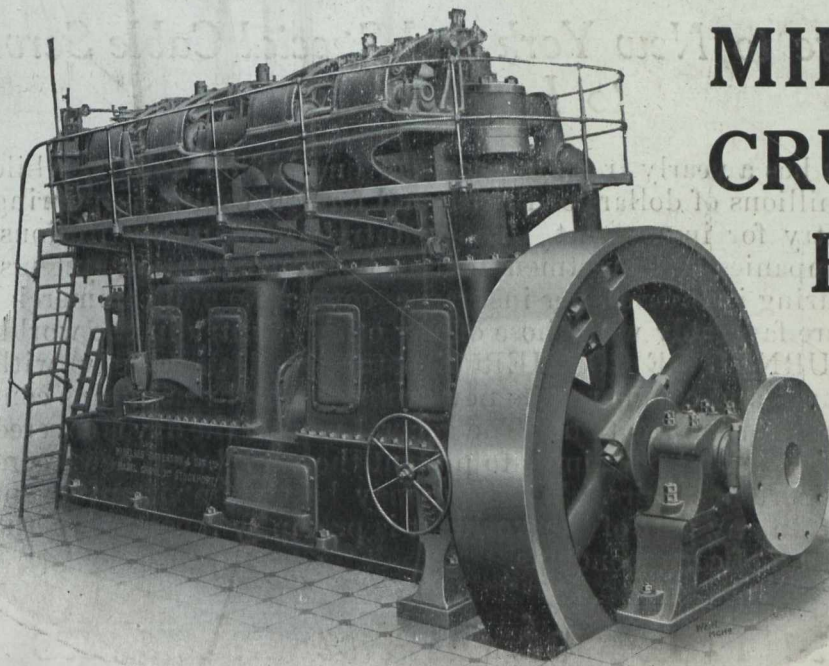
CANADIAN MINING JOURNAL

VOL. XXXVI

TORONTO

No. 5

POWER WITH ECONOMY MIRRLEES CRUDE OIL ENGINES



**Economical
Reliable**

Cut shows 500 H.P.
Engine supplied to the
Town of Yorkton.

ENGINES NOW SUPPLIED AND ON ORDER IN CANADA :

NO. OF ENGINES	TOTAL B.H.P.	SUPPLIED TO	NO. OF ENGINES	TOTAL B.H.P.	SUPPLIED TO
3	1150	Town of Yorkton, Sask.	1	150	Town of Melford, Sask.
4	1400	Moose Jaw Electric Ry. Co.	1	200	" Vernon, B.C.
1	100	Town of Scott, Sask.	1	200	" Penticton, B.C.
1	100	" Wilkie, Sask.	1	150	Sask. Clay Products Co.
			1	240	Le Pas, Man.

BOVING & CO. OF CANADA, LIMITED

VANCOUVER :
804 London Building.

164 BAY STREET, TORONTO

Works : LINDSAY, ONT.

MOOSE JAW :
94 Grafton Avenue