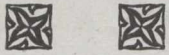
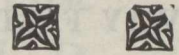
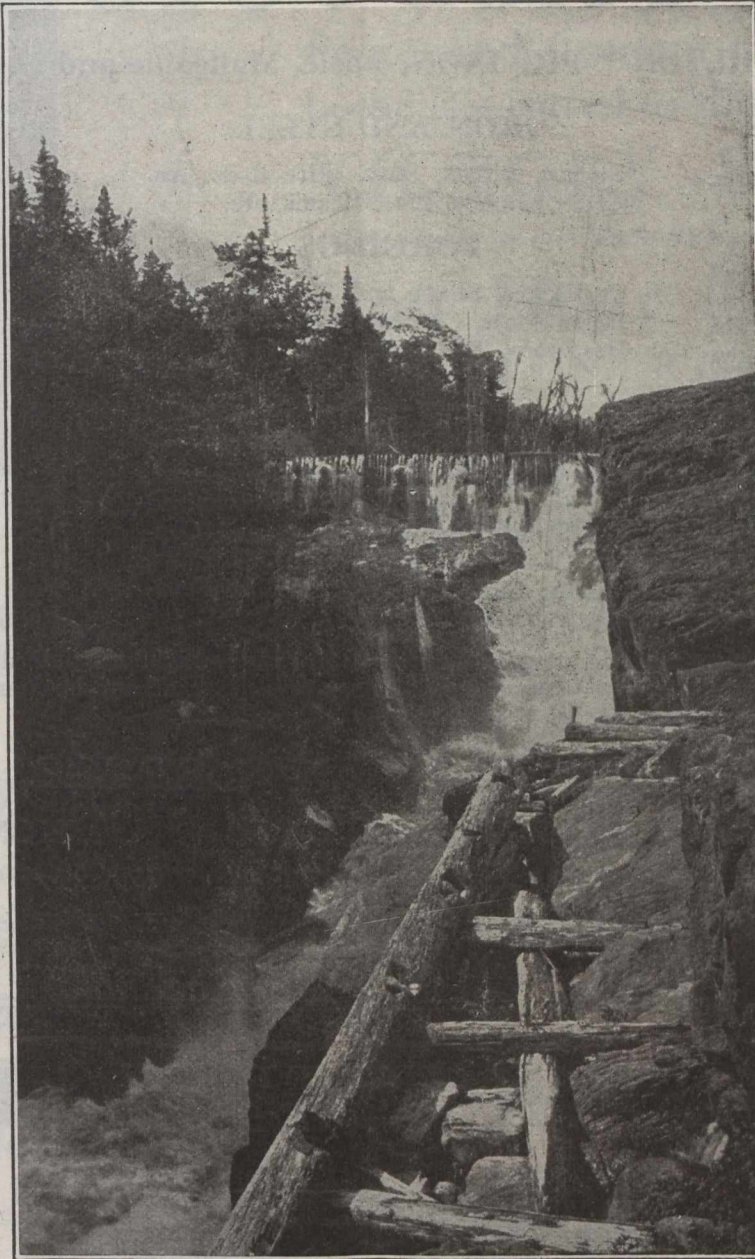


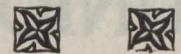
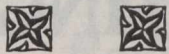
Nova Scotia Water Power



Investigations now under way by the Nova Scotia Water Power Commission have already revealed a natural resource in water power close to existing industrial centres and excellent ocean shipping ports, which, as yet, has hardly been touched.



A partial development of the site here shown has made possible the profitable operation of gold-bearing ores, great bodies of which merely await the development of adjacent water powers for successful and profitable operation.



For Further Information write

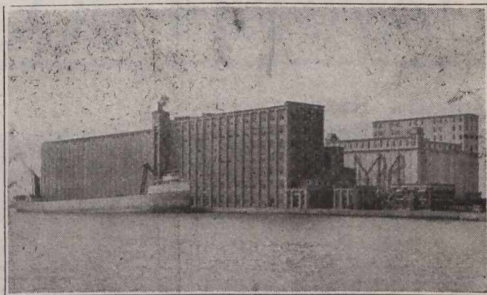
W. B. MacCOY, K. C.,

Secretary Industries and Immigration

HALIFAX, NOVA SCOTIA

CANADA'S GREATEST FLOUR MILL.

This mill supplied more flour to the Allies than any other mill in the world



*Other mills at
Medicine Hat
Kenora
Brandon
Thorold
Welland
and Dresden*

Domestic
Brand
**KINGS
QUALITY**

Export
Brand
**NELSON
FLOUR**

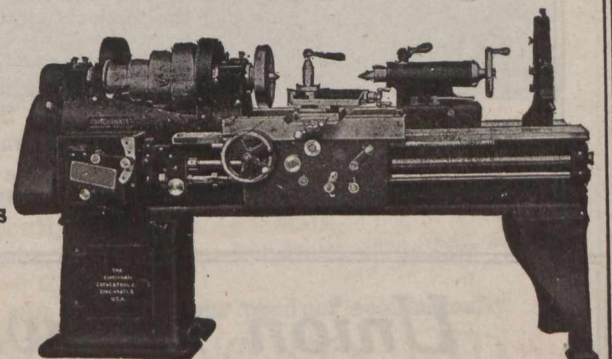
The Maple Leaf Mill at Port Colborne, Ont.

—TOTAL DAILY CAPACITY, 17,000 BARRELS.—

MAPLE LEAF MILLING COMPANY, LTD.
HEAD OFFICE TORONTO, CAN.

“FOSS”

Machine Tools
Small Tools
Concrete Mixers
Contractors'
Equipment



THE GEO. F. FOSS MACHINERY & SUPPLY CO. Limited.
305 St. James St., MONTREAL.