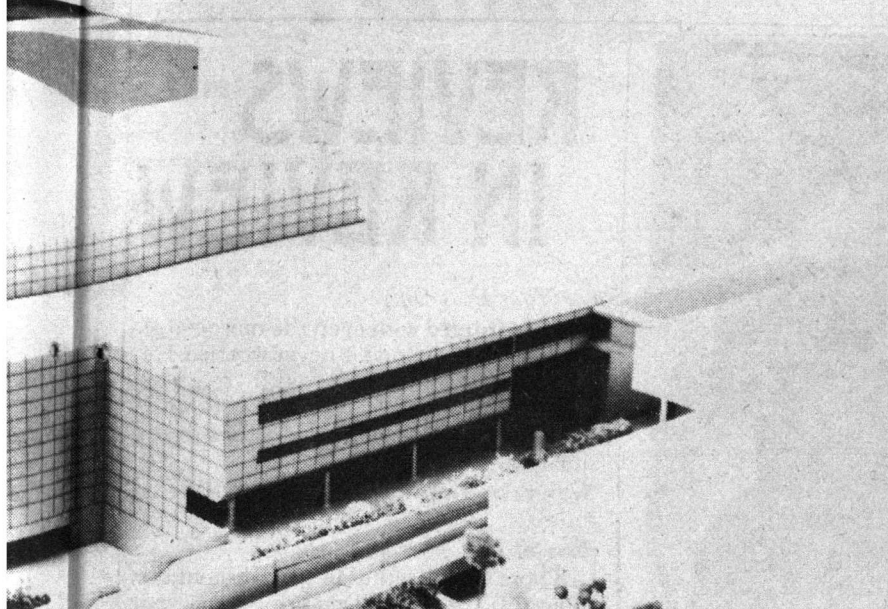


World class aspirations



World University Games, it will remain a feature of the Phys. Ed department.

will be affected by Games funding

\$29.3 million. There is actually a reduction this year because no funds are being supplied for new academic buildings.

"The World University Games was not to be considered apart from the regular academic capital grant," says Ron Phillips, v.p. Facilities and Services.

"The government has financed the Games to the tune of \$32 million: \$16 million this year; and \$16 million next year," he adds.

"The chairman of the Board

(of Governors) and I came at it directly in conversation with the minister (of post-secondary education)," Horowitz says. "We were assured, not only in conversation but also in a letter, that as always the decisions for capital facilities are made independent of each other."

"On the capital side, we make a list of every single project (from new buildings to major renovations). Some are endorsed and some aren't endorsed. That has always been the case."

athletes gather from around globe

larger than the U of A, which can reach over 40,000 between September and April. This population includes students, staff, and extension students.

"It does no harm at all to have an activity that forces many people to talk to each other and hopefully form a common language," Horowitz says.

Along with the athletic events of the Games, a cultural aspect is being included. It will take the form of international symposia and conferences.

"We will not only be involving students, people, and staff of athletics," Horowitz continues, "but a large number of other individuals because the cultural component will be a very important component for these Games."

The international exposure may be emphasized by the history of the Faculty of Physical Education and Recreation at the U of A.

It was the first such faculty in Canada and graduated the first PhD in the British Commonwealth.

the biggest events of the Games, with 50-60 teams participating. Overall, these games are second in size only to the Olympics.

"Over half of the participants in these games go on to compete in the Olympics," says SU president Phil Soper.

Athletes will also use the field house as a training site and to accommodate athletic therapy and administration.

After the Games, the facility will accommodate 5,200 permanent seats. It will be used by the Faculty of Physical Education and Recreation.

The field house will also house a portable competition basketball court, four tennis and volleyball courts, a 200-metre track, field hockey and handball courts, and field events. Options are open also to badminton and lacrosse. Lockers, storage facilities, a concourse and concessions are available.

Some concern was expressed about the size of the track, or that its construction might entail a curved bank, which some athletes feel is inadequate.

"The 200 metre track is non-banked," says McNab. "It will have a large radius. It is similar to the one in Saskatchewan, which the athletes are very happy with."

Students will have an important role at the 1983 World University Games.

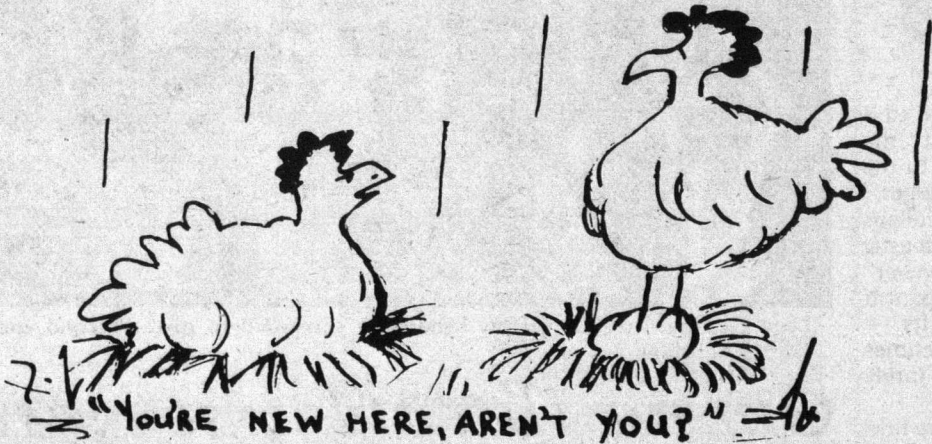
"These Games would not work without participation and work from the student body," Soper says.

"It is important to realize this event will be held in conjunction with the university's 75th anniversary," he says, "and students are going to be very involved with 75th birthday celebration."

In addition to the Games, the Students' Union hopes to hold an international students conference.

"We're looking at some form of international students conference/symposium using delegates from the Games," he says.

courtesy Community Relations



CUTS

**THINKING OF TRAVEL??
CUTS TRAVEL FAIR**

Friday, September 25
11 am - 4 pm
Room 142, SUB

Bringing travel authorities and student travellers together.

CUTS

**MAIN FLOOR
SUB
432 - 2592**

sub
theatre

UNIVERSITY OF ALBERTA

ANN MORTIFEE

With Doug Edwards
Tom Hazlitt
Robbie King
Jim McGillVeray



Tuesday, October 27 and Wednesday, October 28 — 8:00 p.m. — S.U. Concerts present ANN MORTIFEE in concert. Tickets: \$9.00/\$11.00. Available: All Bass outlets.

september
Cinema

tues 22
**Guess
Who's
Back?**



**NATIONAL LAMPOON'S
ANIMAL HOUSE**
The Most Popular Movie Comedy Of All Time

Tuesday, September 22 — 7:00 p.m. and 9:30 p.m. — ANIMAL HOUSE — 1978, USA, 106 min. Dir: John Landis. Cast: John Belushi, John Vernon, Donald Sutherland. Restricted Adult.

wed 23 / thurs 24

"The year's
best film."
— Charles Champlin,
LOS ANGELES TIMES

'TESS'
As timely today
as the day it was written.



Wednesday, September 23 and Thursday, September 24 — 7:00 p.m. only — TESS — 1979, France/Great Britain, 170 min. Dir: Roman Polanski. Cast: Nastassia Kinski, Peter Firth, Leigh Lawson, John Collin. Family.

RAGING BULL Fri., Sept 25 & Sat., Sept 26, 7:00 p.m. & 9:30 p.m.

ALIEN changed to S.O.B.

Sunday, Sept. 27. 7:00 p.m. & 9:30 p.m.