

**STORE OPENS AT 8.30 A.M. CLOSES AT 5 P.M.**

# EATON'S DAILY STORE NEWS

At Yonge, Queen and James Street doors are order boxes, where orders or instructions may be placed. These boxes are emptied at 8.20, 9, 10 a.m., 1, 4, 4.40 p.m.

## High Colors and Huge Pockets Mark the New Top Coat

*Gold, Apple Green and Tan Are the Leading Shades in Which the Spring Coat Appears. And in Every Respect is it Voluminous—Collars and Pockets Immense and the Entire Garment Contrived on a Loose and Generous Scale. As, for Example, the Half-dozen Models Our Artist Has Sketched Below, Selected From the Magnificent Array of New Wraps for Motoring, Dress and General Wear.*

### Flaming Colors, Mushroom Hats, "Barrel" Frocks

Three of the Outstanding Features of the Spring Mode, as Viewed by "The Scribe," in Gotham.

**N**EW YORK, Feb. 2nd. The first of the brightest splashes of color in the world—an August garden, a Sorolla painting, a Navy-blue blanket, a Georgian Bay sunset, a ripe wheat-field ablaze with poppies. Blend them into one blaze of blue, green, yellow, purple and pink, and you will have a good idea of the general aspect of the latest thing in smart togethery. The air is electric with possibilities of War, but this is the cheerful front which fashion presents. Milliner, dressmaker, tailor—each appears at first sight to be conducting a small Darbar. It is a season of Oriental brilliancy of tint. Gold, yellow, Chinese blue, Persian pink, jade green—these are some of La Mode's pet shades.

And very delightfully, it must be confessed, are they exploited in the new head-wear. For Spring hats, he it declared, are of the simplest description—nine out of ten of them of the medium size mushroom type, the teeth being a sailor or a tricorne. As for "trimming," a band, a ruffle or a cockade of ribbon, a medallion of wool embroidery or perhaps a metallic cabochon—this is the invariable decoration. Which severity of line and treatment so well befits bright color. And, of course, for those of conservative taste and mature years are similar models in nigger brown and black—immensely smart in their clever simplicity.

Fine tagel straw, the shining liere, crepe de Chine and satin—it is of these that the most beautiful grilling hats are composed.

Pockets, pockets, pockets—they are Fashion's sign and seal in suits, coats and frocks. Not the conventional pocket allowed to a woman at sundry times for the accommodation of a handkerchief and possibly a purse and household keys, but a pocket of limitless capacity, in which one may with impunity stow away anything from a lap dog to the contents of a knitting bag. Moreover, they appear in pairs, one at either side of the skirt or coat, so arranged on the big line that their bulkiness will contribute to the barrel silhouette.

The simplicity that marks the hats prevails in the gowns also, pleats and tucks serving by way of chief ornamentation. Satin, khaki-kool and crepe de Chine are the favored materials. And very novel for many a year has it been one's pleasure to dilate upon frocks that are so charmingly sane, so appealingly feminine. For those who deem the gold yellow and Japanese greens a trifle too gay, there are seen in many lines, demure and pastel tans. A charming innovation is thin-hair-dress of wash satin in white or flesh pink, while a chic novelty is the "half-robe" dress, with its opening cleverly disguised on the shoulder.

Not a trace of Victorian form remains in the new mode. Skirts take an inward curve around the ankles.

*The Scribe.*

**A.** Old gold velours is the material thereof, with fuchsia pink velour facing the deep cape collar, oblong "silver" buttons decorating belt, cuffs and collar, and old gold satin filling the role of lining. Thus runs the story of this smart new coat from New York, which is the very embodiment of the mode of 1917—high color, huge collar, immense pockets and ample dimensions, generally. It is an individual model, and priced \$52.50.



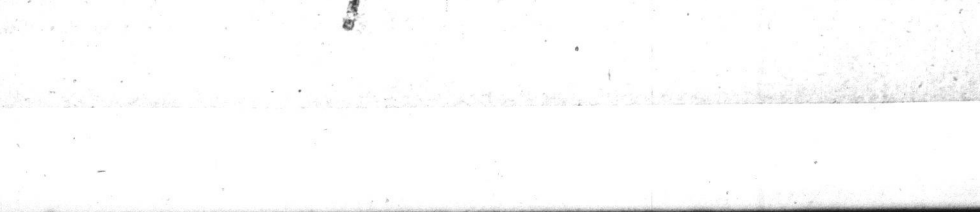
**B.** "What a nice little coat for general service!" is a common expression of approval where model "B" is concerned. It is developed in navy blue serge of the fine, firm "men's tear" quality, with grass green silk poplin facing the collar and cuffs, and satin of the same fashionable shade composing a lining for the sleeves and shoulders. If preferred, the facings and lining may be of tan, Copenhagen blue or black. Or the entire coat may be of black. The sleeves, you will note, are raglan made, while the belt permits you to knot it loosely in girde effect or cross it over and button it at either side. Price, \$18.50.



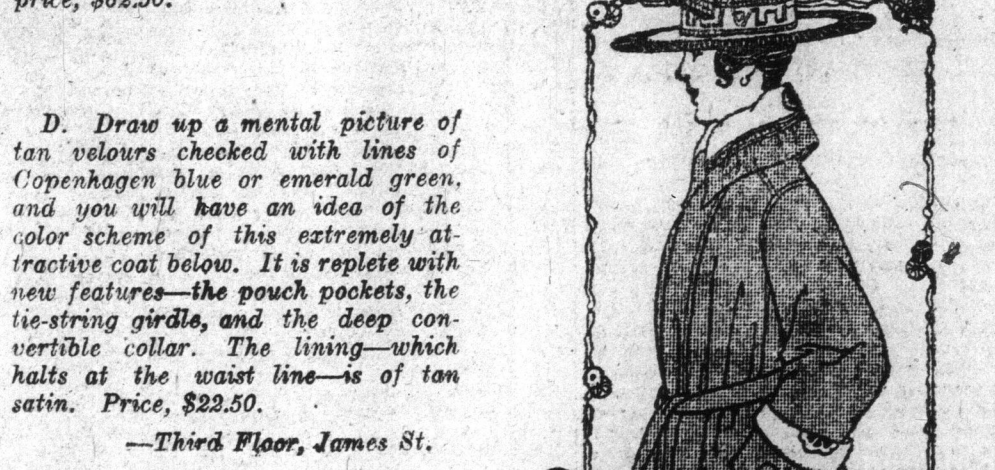
**C.** Regarded in New York as one of the smartest types of coat the season has given to us. Made of Poirer twill—like a fine gabardine—in that shade of pale tan which resembles putty, it makes sure of the approval of conservative taste, while filling all the requirements of latest mode. For instance, the capacious pockets, and the enormous collar faced with khaki-kool broadly striped in black and blue. It is lined throughout with putty color satin. This is an individual model—priced \$47.50.



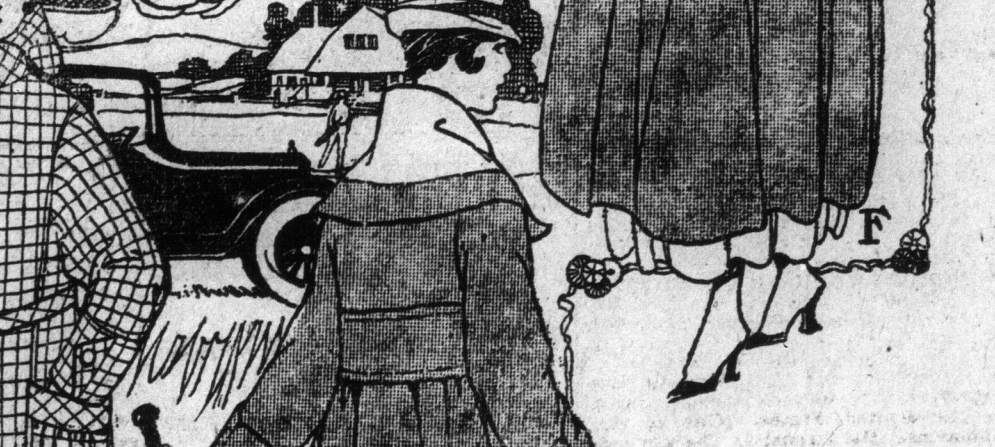
**D.** Draw up a mental picture of tan velours checked with lines of Copenhagen blue or emerald green, and you will have an idea of the color scheme of this extremely attractive coat below. It is replete with new features—the pouch pockets, the tie-string girde, and the deep convertible collar. The lining—which halts at the waist line—is of tan satin. Price, \$22.50.



**E.** Behold a veritable triumph in coat-making, this swagger model to the right. It is fashioned of the softest of moss green velours lined with gold pussy willow silk patterned with an Indian motif in black and blue. Glimpses are to be had of this silk in the facing of the deep collar and cuffs. And La Mode sets the season's mark upon the wrap by adding a tie girde and a pair of big baggy pockets. It is a New York model—price, \$62.50.



**F.** Burella, or, as it is more popularly termed in America, monks' cloth, is the fashionable fabric of which the coat labeled "F" is composed. It is procurable in a small rainbow of modish shades—apple, leather tan, putty, mahogany, and ruby, the broad collar faced in each case with fine velours of the same tint, or white. The pockets are of the slash order. Priced as an extra special value, at \$15.00.



**E. Burella, or, as it is more popularly termed in America, monks' cloth, is the fashionable fabric of which the coat labeled "E" is composed. It is procurable in a small rainbow of modish shades—apple, leather tan, putty, mahogany, and ruby, the broad collar faced in each case with fine velours of the same tint, or white. The pockets are of the slash order. Priced as an extra special value, at \$15.00.**

**—Third Floor, James St.**

**THE T. EATON CO. LIMITED**

### Some of the Wednesday Bargains in the February Sale of Furniture and House Furnishings

- Ready-mixed Paints—Outside white, inside white; also cream, buff, pea green, or medium green—A great sale special, quart, 49c.
- Verandah Floor Enamel, 48c.
- Gold Paint, 25c.
- Aluminum Paint, 20c.
- Fourth Floor, Queen St.
- Heavy Oilcloth, including many floral and block patterns, reduced to 35c per square yard.
- Armstrong Rugs Less Than Price at Mill—Sale special, \$6.25 to \$16.25. Sizes 4' 6" by 6' to 6' 9" by 10' 6".
- Fourth Floor, James St.
- Cretonnes, 36 inches wide, at 23c a yard.
- Nottingham Curtains in fine qualities, reduced to \$2.45 a pair.
- Fourth Floor.
- In the February Sale of Silverware—Silver-plated Coffee Sets, half usual price, at \$15.00 and \$17.00; Tea Sets, very specially priced, at \$8.95, and Casseroles at \$5.00.
- Main Floor.
- 3-Light Electric Fixtures, in brass finish brass, sale price, \$3.75.
- Electric Fixtures for all types of rooms, greatly price-reduced, at \$3.75 to \$5.00.
- Basement.
- Dining-room Day in the February Sale of Furniture, Wednesday—Exceptional values offered in Buffets, Extension Tables, Chairs and Suites. All Canadian made. Period and modern designs—Buffets, in golden and fumed oak, at \$24.50, \$25.75 and \$34.50. Suites, in mahogany, walnut, from \$64.25 to \$134.75, and Dining-room Chairs, in oak and mahogany, from \$15.75 to \$45.00 the set.
- Furniture Building, Albert and James St.

### Let the Shopping Service Help You With Your February Sale Purchases

And its usefulness does not end with the making of purchases, for if you cannot make up your mind exactly what to choose, all you have to do is to write or phone the Shopping Service, Main 2501, and information and advice will be mailed to you with the greatest promptitude.

General election formed. The Gun... Mr. Hughes had been sub... by the peo... was the inter... to credit this... gun account... by the govern... and spare parts... (b) enquired... that W. Stan... Meighan and... and commissio... on up to Dea... The commis... its labors un... such that full... with propriety... mind world... portant subject... The special... in the judgment... results justified... second interin... forces. He told that the... had not put... the British... the summer of... ing, the Brit... Montreal, pe... that during the... were pur... because of it... es in the open... in Canada... he spring. Be... ber last 5,079... and last... from Cana... an average of... bought in the... movement in... given Mr. Sin... was th; inven... to introduce... the manufactu... liquor. And it was not... mation regard... when asked... had sunk... of the coast... ver last, and if... report as to... vessels sunk... or last year... ham was in... had been hon... being deprived... "work pay." It... pay the men... others, was the... TRICT CASUALTIES y Show That Supreme World. This district has... during the... hos. Martha of... township, has re... The James Ma... missing, was shot... white and went... being a former... police. He received an of... that his son, P... in action on... with the colors... His parents, ... sister survive... son of Mal... ley, is reported... resolved that P... ville made the... He was in... ed with a W... nother, two bro... of Mr. and Mrs... Lake, is also re... France. AY LAST ADRIFT as to the Res- Floe on ariq. World. Daniel S... chief of police... hunting ducks... the ice on... then carried... miles and into... saving crew at... their boat out... the ice floe for... S CIL BOARD on and Selects to Fill es. World. 5.—Ovt... vacancies in... new nominations... following quali... G. Samuel, G... Stephens and L... ction held here... med were elect... from taxation... Mfg. Company... Company were... ty-five votes... FOR WAR. Feb. 5.—Wor... the arming of... ft under the... the necessity... United States... in naval orders... navy depart... rking hours of... shops. nded NO-RUB SOAP PETITION St., Toronto

### MILLION WOMEN DO WORK OF MEN

**British Labor Secures Recruits in Place of Soldiers at Front.**

### FEW GO ON FARMS

**New Element of Competition Between Sexes Introduces Another Problem.**

London, Jan. 20.—Almost a million women—exactly 985,000—have entered all kinds of positions held by men before the war began, and of this number nearly all—exactly 933,000—were actually substituted for men called to the front or diverted to other war activities. This is shown in a survey of the whole movement toward woman labor since the outbreak of the war, made officially by the labor department, with data down to the last two months. It shows 3,231,000 women now employed in all branches of industry and commerce, or about a million more than when the war began. It is this new million of women workers one sees at every turn, on the tramways and motor buses taking fares, in the government offices taking the place of the men waiters and cashiers, in banks and business houses, and running cinemas,

theatres, public houses, and the whole range of business activities.

Just how far this has gone the government has now figured out to a nicety. In banking and finance, for instance, there were only 9500 women employed before the war; now the number has increased fourfold to 46,000. In government departments, also, the women workers have increased from 66,000 to 133,000, displacing more men in hotels, public houses, cinemas, theatres, etc., the increase of women being 16,000 and the displacement of men 80,000.

On buses, trams and various kinds of transport service the women have increased 41,000, the entire number replacing that number of men. Men teachers are also largely replaced; also men on municipal transport work, the total increase of women in this line being 34,000, of which 31,000 replaced men. In farm work many men have been drawn off for the war, but few women have replaced them. The men on farms replaced by women is given at 20,000, while the number of women farm workers is 80,000, and the increase since the war only 500. Women nurses since the war only 500. Women nurses since the war only 500. Women nurses since the war only 500.

### GUELPH GOES AFTER HUNDRED THOUSAND

**Patriotic Campaigners Start Three Days' Work for That Amount Yesterday.**

Special to The Toronto World. Guelph, Feb. 5.—The patriotic campaign for Guelph opened up this morning with a swing, and the canvassers were out bright and early in the cold and storm. The objective of the three days' campaign is \$100,000. Of this amount the city council granted \$20,000, and the balance is to be raised by private subscription. The objective last year was \$50,000, and over \$90,000 was obtained. At the noon luncheon today the executive committee announced that the first forenoon's canvass had netted nearly \$16,000. There are a number of large subscriptions which were not announced. The greatest enthusiasm prevails, and it is expected that the objective will be more than realized.

### PUT BAN ON CURTAINS.

Brantford Police, Suspicious of Gambling, Issue New Order to Chinese.

### DIES OF INJURIES.

J. J. Burns, Victim of C.P.R. Accident, Succumbs in Hospital.

### KENT BATTALION NEEDS TWO HUNDRED MEN

Whirlwind Campaign is Started to Bring Unit Up to Strength.

Special to The Toronto World. Chatham, Feb. 5.—The officers and men of the 16th Kent Battalion today opened a whirlwind campaign to secure recruits to bring the battalion to full strength. Some 200 recruits are still required if the battalion is to be allowed to proceed overseas as a unit. Recruiting squads, in the charge of junior officers, have been sent to each county town to make a personal canvass of all eligible young men. The first of a series of rallies will be held in Bothwell tonight. Maj. Robins, chief recruiting officer of Canada, will assist in the campaign, which includes patriotic rallies in the principal county towns, terminating with a mass meeting to be held here Tuesday evening of next week.

### TO ACT FOR GERMANS.

Special to The Toronto World. Kingston, Ont., Feb. 5.—German prisoners at Fort Henry will be looked after by the consul-general of Sweden at Montreal. Parcels to the prisoners from their American friends will now be sent to that official.

### SCOUTING WORK MARKS RUMANIAN OPERATIONS

Both Russians and Germans Have Nothing New to Report.

### CLOSING OF HOTELS CAUSES SERIOUS LOSS

Kingston Merchants Find Business Going Elsewhere Because of Poor Accommodation.

### RJSSIAN SHIP DESTROYED.

London, Feb. 5.—The Russian four-masted barque Garnet Hill, of 2,472 tons gross, is believed by Lloyd's Shipping Agency to have been sunk.

### ST. ANDREW'S, CHATHAM, TO CALL REV. A. S. ORTON

Congregation Makes Recommendation to Fill Vacancy Now in That Church.

### FRENCH COMMANDER-IN-CHIEF VISITS ITALIAN HEADQUARTERS

Paris, Feb. 5.—The French commander-in-chief, Gen. Nivelle, has been for some days the guest of Gen. Cadorna, the Italian commander, at Italian army headquarters, says a Havas dispatch from Rome. Gen. Nivelle arrived at the Italian headquarters on Feb. 1. He is now on his way back to France, after an audience with King Victor Emmanuel.

### PETER FELMING DEAD.

Special to The Toronto World. Chatham, Feb. 5.—Peter Felming, well-known Zone Township farmer, died in the public General Hospital this morning, following a two weeks' illness. He was unmarried.