

SAW MILL MACHINERY

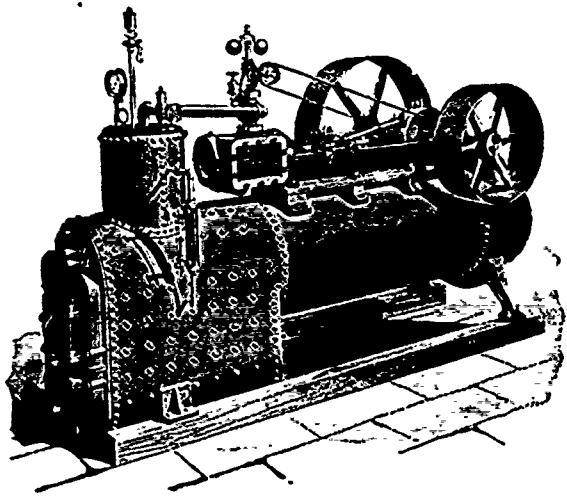
Full lines of MACHINERY and SUPPLIES
for Stationary and Portable Saw Mills.
Engines and Boilers—New and Second Hand.
Shingle Mill Outfits.
Woodworking Machinery of every description.

Agent for the genuine Hoe Chisel Tooth Saws.
Magnolia Metal.
Buffalo Pressure Blowers and Exhaust Fans.
Dry Kiln Plants.
Steel Rails—New and Second Hand.
Mining Machinery. Air Compressors. Steam Pumps.

SPECIAL FOR SALE
Waterous No. 2 Band Mill, 8 ft. wheels. A bar-gain.
Wheelock Automatic Engine, 17 x 34. Good as new.
Leonard Ball High Speed Engine, 10 x 12.
Double Edger, refitted, three saws. Cheap.
24" Little Giant Water Wheel.
Send for New Catalogue No. 21.

H. W. PETRIE

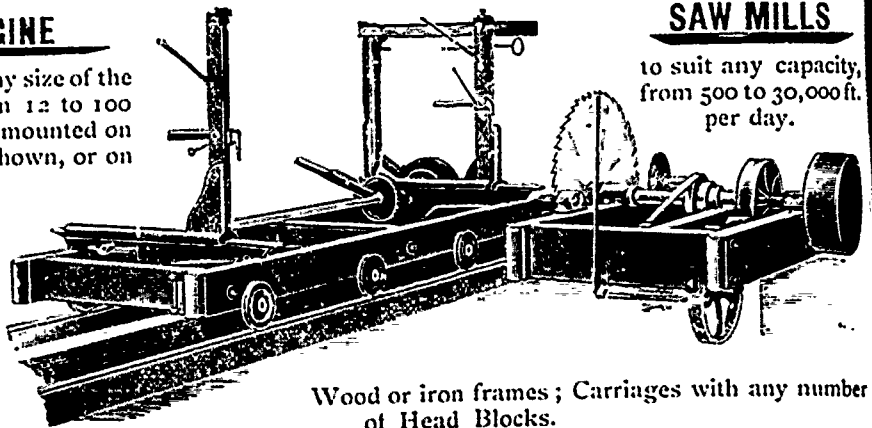
141 to 145 Front Street West (Adjoining Union Passenger Station) TORONTO, CANADA



PORTABLE ENGINE

We can furnish you any size of the above style Engine from 12 to 100 H.P., either on Skids or mounted on wheels with Engine as shown, or on separate Frame.

Also Engines, Boilers, Double Edgers, Trimmers, Top Saw Rigs, Log Jacks, Niggers, Shafting, Pulleys, Gears, Saws, etc. We can save you money. Let us quote you prices. Catalogues free.



SAW MILLS

to suit any capacity, from 500 to 30,000 ft. per day.

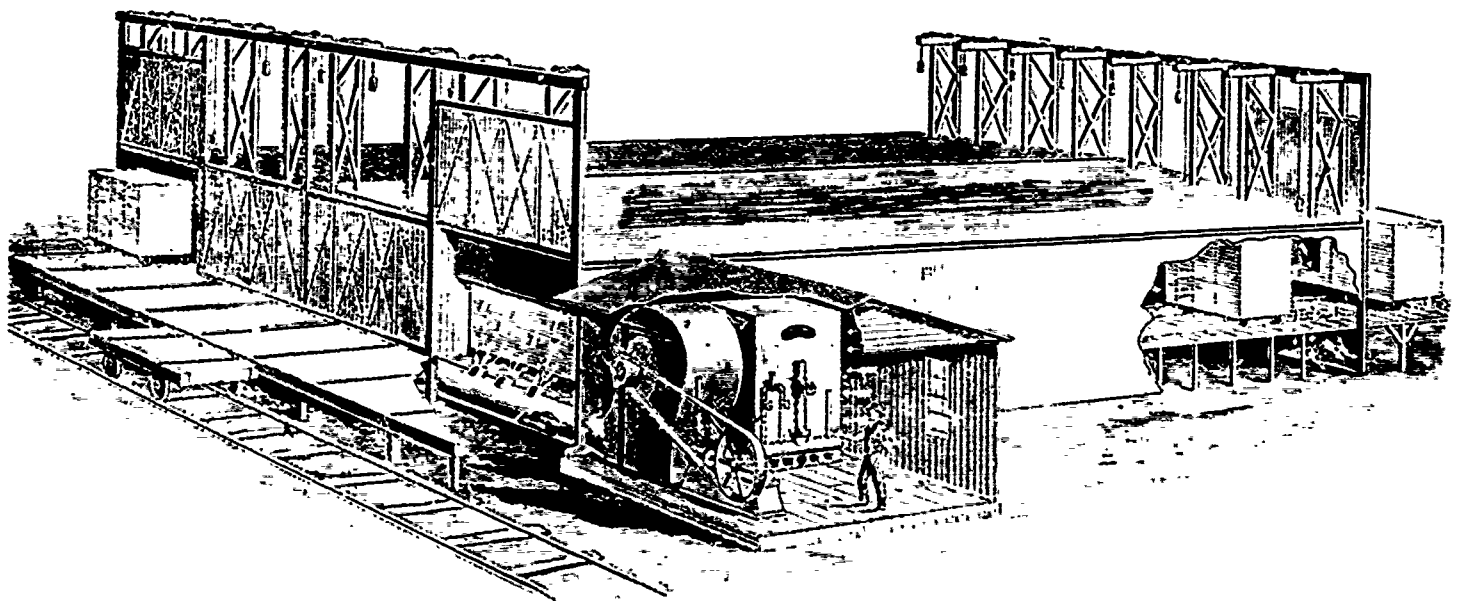
Wood or iron frames; Carriages with any number of Head Blocks.

ROBT. BELL, JR., Box 35, HENSALL, ONT.

MONTREAL DRY KILN APPARATUS

FOR

Lumber, Shingles and all Mill Products



E
C
O
N
O
M
Y

E
F
F
I
C
I
E
N
C
Y

SHAVING CONVEYORS, AUTOMATIC BOILER FEEDS, Etc., Etc.

GEORGE W. REED & CO.

Heating and Ventilating Engineers.

783 and 785 CRAIG STREET, MONTREAL