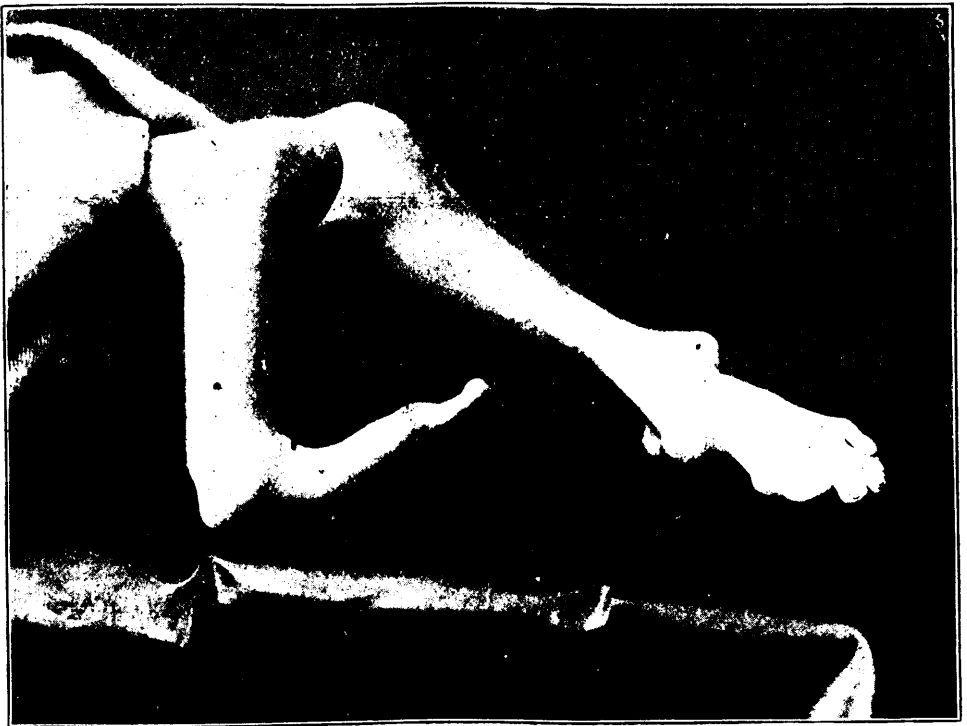


body is unusually well developed, being very muscular in his arms. Circulatory, respiratory, nervous and genito-urinary systems are all normal.

Right leg,—the femur and patella are normal in their relations. The leg is rudimentary, but one bone being present and forming the prominence at the knee and external malleolus. There is a dislocation of the leg outwards at the knee, so that the whole surface of the inner condyle of the femur can be plainly felt beneath the skin. The leg cannot be extended beyond a right angle, but can be fully flexed. The foot is rolled inwards at the ankle so that it lies on the inner side of the lower extremity of the leg, with the sole looking upwards. There are only four metatarsal bones and four toes. The muscles are small and flabby from lack of use.



Left leg,—is normally developed: the knee is quite normal with some undue prominence of the head of the fibula. The bones of the leg are twisted spirally, as if the knee had been held firm and the foot forcibly twisted inwards. Both malleoli are very prominent, the inner bone being on a much lower level than the outer one and being the part of the foot which is walked upon. The foot is turned inwards. It is dislocated upwards between the tibia and fibula, causing a limitation in the movements at this joint. The metatarsal bones are curved with the concavity on the inner side of the foot.