

**DRAUGHTS-CHECKERS**

All communications to this department must be addressed *directly* to the Checker Editor, Mr. W. Forsyth, 36 Grafton St.

**TO CORRESPONDENTS.**

C. E. MATTHEWS, St. John, N. B. —Your letter is received with thanks. You will observe that we use this week one of the fine problems that you so kindly sent us therein. Will mail you a letter this week.

**CORRECTION.**

In our last problem (No. 289) an error occurred in placing one of the black men on 11 instead of on 15, where it should have been.

**SOLUTION.**

**PROBLEM 288**—The position was: black men 3, 12, 15, 23, king 30, white man 28, kings, 4, 10, 21; black to play and win.  
 15—19 16—20 20—24 23—7  
 10 15 24 19 19 26 21 17  
 12—16 3—8 30—23 7—10  
 15 24 4 11 28 19 b. wins.

**GAME 179—"Chess."**

Played recently at Halifax between Mr. Steve Heisler (black) and Mr. Samuel Granville (white), both of this city.

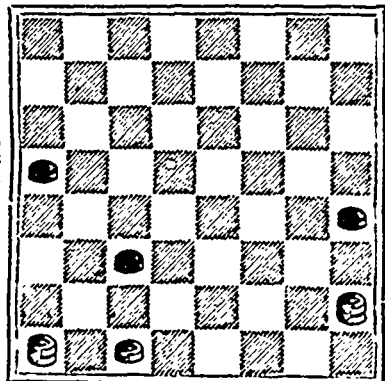
11—15	9—13	19—26	15—19
23 18	32 27	30 23	11 20
8—11	1—5	3—7	19—26
27 23	27 23	24 19	20 24
4—8	5—9	15—24	26—30
24 20	23 16	28 19	24 19
15—19	10—19	7—13	30—26
23 16	31 27	19 12	19 15
12—19	8—11	10—15	26—17
18 15	27 24	12 8	15 10
11—18	11—15	2—7	
22 15	16 11	8 3	white
9—14	7—16	7—11	wins.*
25 22	20 11	3 7	
5—9	6—10	11—16	
29 25	26 23	7 11	

\* This was a rather unexpected finish, for if "Steve" had played better he could have won. It will be good exercise for our readers to point out the win that he missed.

**PROBLEM 290.**

Contributed by Mr. C. E. Matthews, of St. John, N. B. Would like to know the author, and when and where it first appeared.

Black men 13, 20, 22.



White man 30, kings 28, 29.

White to play and win.

This is a very fine position, and we consider that it will require a player of experience to solve it.

Halifax Printing Company, 161 Hollis Street.

**PARSONS**



**PILLS**

**Make New Rich Blood**

"Best Liver Pill Made."

They positively cure SICK HEADACHE and BILIOUSNESS, all Liver and Bowel Complaints. In Glass Vials, Thirty in a bottle, one a dose. They expel all impurities from the blood. Delicate women find great benefit from using them. Sold everywhere or sent by mail for 25c. In stamps: five bottles \$1.00. Full particulars free. L. S. J. D., 25 & 27, 21, South Avenue St., Boston, Mass.

**COPPER** HONOR SPONORS USE  
 BEST MACHINERY FOR METAL EXTANT  
 CANADIAN MADE & SUITS THE WORLD.  
 QUALITIES TO DO ALL YOUR WORK.  
 HARDWARES ALL HOT SELLS.  
 COOL BEARINGS NO HOT SPOTS.  
 EASY AS AN OPEN SHOE.  
 GENUINE SAFETY VALVES.  
 FOR ENGINEERS  
**METAL**

Hardwares all Sell it.

**BBB CURES DYSPEPSIA.**  
 Dyspepsia arises from wrong action of the Stomach and is the cause of much misery and many diseases such as Constipation, Biliousness, Bad Blood, Headache, Burdock Blood Bitters is a prompt and effectual cure because it tones the stomach, aids digestion and renovates the entire system. Cases which seemed past hope have been completely cured by B.B.B.  
**LIFE WAS A BURDEN.**  
 "Life seemed a burden, the simplest food disagreed with me, and I was in misery from Dyspepsia, but two bottles of B.B.B. entirely freed me from it." says Miss L. A. Kuhn, Hamilton, Ont.

**Athlete and Derby CIGARETTES**

Are Sold on their MERITS.

Everybody knows they are the Best.

Everybody Smokes Them.

They have no Rivals.

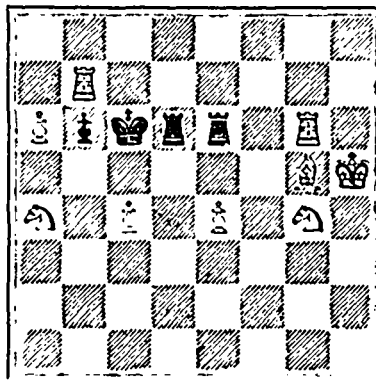
**CHESS.**

Solution to Problem 121: 1 Q to B3.

**PROBLEM No. 124.**

Land and Water.

Black 4 pieces.



White 9 pieces.

White to play and mate in two moves.

**GAME No. 127.**

Game by correspondence between Messrs. Dinse and Narraway.

STAUNTON'S OPENING.

- |                 |                 |
|-----------------|-----------------|
| White.          | Black.          |
| A. M. O. Dinse, | J. E. Narraway, |
| Montreal.       | Ottawa.         |
| 1 P to K4       | P to K4         |
| 2 Kt to KB3     | Kt to QB3       |
| 3 P to QB3      | K: to KB3       |
| 4 P to Q4       | Kt takes P      |
| 5 B to K3       | P to Q3         |
| 6 B to Q3 a     | Kt to KB3       |
| 7 B to QKt5     | B to Q2         |
| 8 Castles       | P to K5         |
| 9 Kt to Kt5     | P to KR3        |
| 10 P to Q5      | Kt to K4        |
| 11 B takes B ch | Q takes B       |
| 12 Kt to KR3    | Kt to Q6        |
| 13 P to QB4     | Kt to KKt5      |
| 14 Kt to B3     | P to KB4        |
| 15 Kt to QKt5   | Kt takes QKtP   |
| 16 Q to Kt3     | Kt to Q6        |
| 17 Kt to Q4     | Kt to QB4       |
| 18 Q to Kt4     | B to K2         |
| 19 Kt to K6     | Kt takes Kt     |
| 20 Q takes KtP  | Castles         |
| 21 P takes Kt   | Q takes P       |
| 22 Q to Q5      | Q takes Q       |
| 23 P takes Q    | P to KKt4       |
| 24 P to K3      | KR to QB1       |
| 25 QR to QB1    | P to QR4        |
| 26 P to R4      | R to R3         |
| 27 R to B2      | P to B4         |
| 28 B to Q2 b    | Kt to B3        |
| 29 P to B3      | Kt takes P      |
| 30 P takes P    | P takes P       |
| 31 R to K1      | Kt to B3        |
| 32 B to B3      | P to Q4         |
| 33 Kt to B2     | R to Q1         |
| 34 Resigns      |                 |

**NOTES.**

a White might have won a piece for two pawns by 6. P to Q5 followed by Q to R4 ch.

b This loses a third pawn.

c The three united passed pawns are irresistible.

SALSMAN Wanted-Salary and expenses paid Bro. W. P. Co., Nurserymen, Toronto, Ont.

London Rubber Stamp' Mfg Co.  
 Rubber and Metal Stamps,  
 Notarial Seals,  
 Hectograph Copying Pads,  
 Stencil Cutters, &c.  
 223 HOLLIS ST., Halifax.

**Old Chum**

(CUT PLUG.)

**OLD CHUM**  
(PLUG.)

No other brand of Tobacco has ever enjoyed such an immense sale and popularity in the same period as this brand of Cut Plug and Plug Tobacco.

Oldest Cut Tobacco manufacturers in Canada.



MONTREAL.

Cut Plug, 10c. 1/2 lb Plug, 10c. 1/3 lb Plug, 20c.

Have you tried the 'Cable Extra' CIGAR?

'EL PADRE' PINS.

'EL PADRE' Reina Victoria.