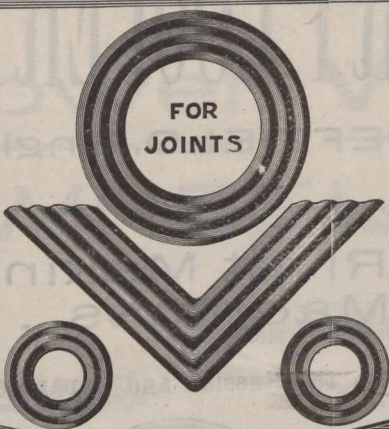


TAYLOR'S PATENT

CONTRACTORS TO THE ADMIRALTY
 THE ATTENTION OF ENGINEERS & OTHERS IS SOLICITED TO THE PRINCIPLES OF OUR UNIQUE PACKING. THIS PACKING CONSISTS OF METAL RINGS OBLONGS, & SQUARES, CUT FROM THIN SHEETS OF BRASS, & CORRUGATED; FOR THE PURPOSE OF BEING PLACED IN JOINTS IN THE JOINING OF METAL PIPES. MAKING JOINTS STEAM & WATER-TIGHT, IN MAKING JOINT CORRUGATED THE RING IS LAID WITH CEMENT ON INNER PART OF FLANG, CLEAR OF BOLTS, IN DRAWING UP JOINT, RIDGES OF CORRUGATIONS YIELDING TO IT WILL TAKE IMPRESSIONS OF IRREGULARITIES OF SURFACES OF FLANGES, MAKING IT POSSIBLE FOR HIGH PRESSURE FROM STEAM OR WATER TO ENTER JOINT.

SOLE MAKERS **NEWTON**
 TYNE DOCK CORRUGATED PACKING WORKS



METALLIC PACKING.

& SPANISH ROYAL NAVAL COMMISSION

SOME ADVANTAGES OF THIS PACKING ARE :
 1-CHEAPNESS, NO CUTTING OF HOLES TO MAKE COST OF RINGS BEING A TRIFLE COMPARED WITH IMPORTANCE OF HAVING A GOOD JOINT.
 2-THIS PACKING IS SUITABLE FOR HEAT PETROLEUM BOILER STAYS ETC.
 3-BY USING RINGS TIGHT JOINT CAN BE MADE WITH GREAT CERTAINTY.
 4-WITH THIS PACKING A CLOSE NEAT JOINT CAN BE MADE.

THESE RINGS MANUFACTURED IN BRASS COPPER GUN METAL & STEEL

& NICHOLSON
 SOUTH SHIELDS

Give the
JOURNAL OF COMMERCE
 — A TRIAL FOR —
JOB PRINTING.

Telegrams : " WALKER-HODGETTS, SALFORD.

"WALKER-HODGETTS

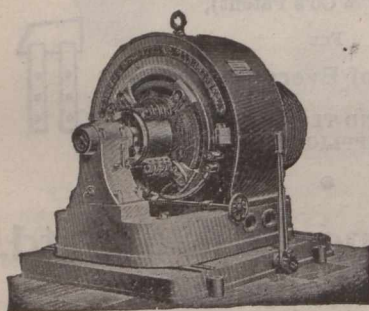
*Multipolar
 Dynamos -*

WALKER & HODGETTS,
 LIMITED,

Manufacturing
 Electrical
 Engineers,

St. Simon's
 Electrical Works

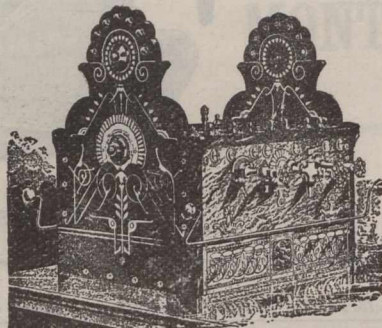
SALFORD
 Manchester, England.



Special prices to Canadians under the New Tariff.

...Soda Fountains...

Of Best English Make,
 Under the New Tariff.



We make a specialty of this article and manufacture ourselves the latest improvements, which are secured to us by our own patents. FULL PARTICULARS ON APPLICATION.

Soda Water Machines for Filling Syphons and Ball Stopped Bottles.

Our new designs have great advantages. Particulars free. BOTTLING, CORKING, BOTTLE WASHING and CAPSULING MACHINERY in great variety and of latest design. Catalogue free.

J. P. JACKSON & Co.,
 63 Duke St., LIVERPOOL, Eng.

TELEGRAMS : " LEEDHAM," LEEDS, ENG.

(Established at Kirkstall Forge, nr. Leeds, 1779).

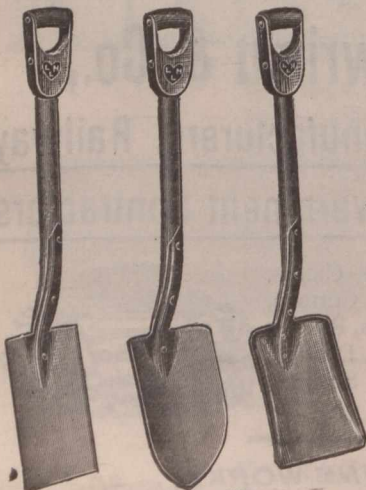
LEEDHAM & HEATON, Ltd.,

Armley Road Works,

LEEDS, ENGLAND.

MANUFACTURERS
 OF

Spades, Shovels, Hammers,
 Picks, Wedges, Etc.



List of Prices on Application, Special Terms.