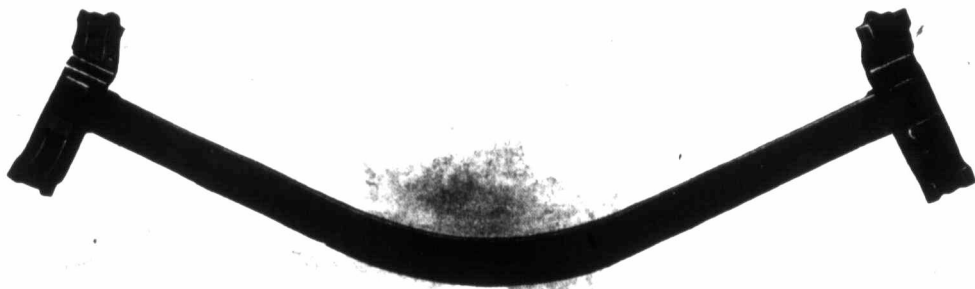


The Standard Beam



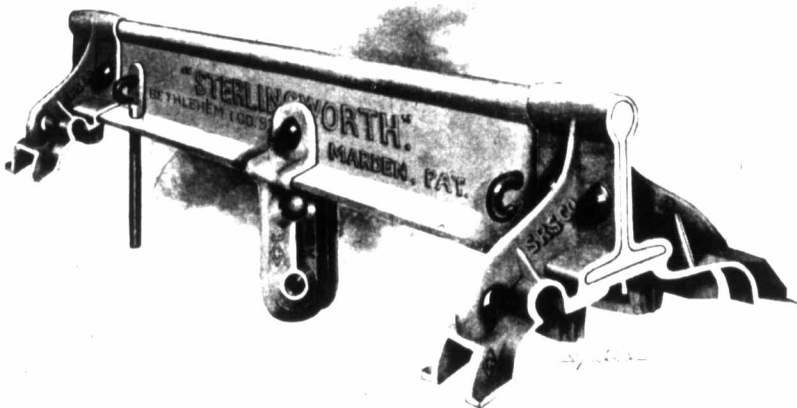
OUR STANDARD.

Result of a wreck in which a number of cars were demolished.

Illustrating Our Claim for Indestructibility.

THIS BEAM was under a Swift refrigerator car. The guide pins and fulcrum alone were destroyed. The Beam itself was straightened at our blacksmith forge without any special tools, and restored to service at a labor charge of fifteen cents. This clearly indicates that the Beam proper cannot be actually destroyed.

All Over the World



OUR STANDARD.

Showing same Beam restored to its normal condition, ready for service.

Illustrating Our Claim for Indestructibility.