

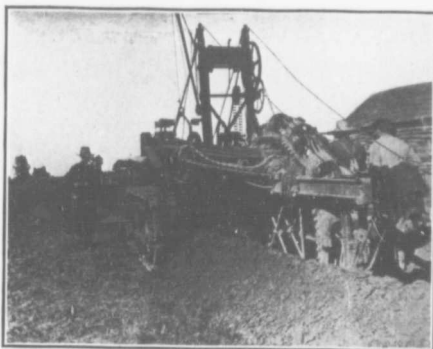
Canadian Pacific, Wabash, Michigan Central and Pere Marquette, while a fifth, the Canadian Northern, is in sight. The C., W. & L. E. electric line, running north and south, also serves a large part of the township. On the south Lake Erie and on the north the River Thames provide waterway facilities.

The city of Chatham, at the north east corner of Raleigh township, and the town of Merlin, to the south, are leading marketing points, while considerable trade is also done with Blenheim. Many farmers make good money raising canning factory produce for the canning factories at Merlin, Chatham and Blenheim, while the sugar beet industry is, particularly in the northern part of the township, regarded as very important and profitable. Shipping points are conveniently situated on the various railroads, facilitating the shipping of produce by the farmers.

TILBURY EAST TOWNSHIP

The township of Tilbury East extends from the River Thames to Lake Erie, its western boundary adjoining Essex County. The soil is the deep black loam which abounds in this section. While excellent crops of grain and grasses are grown, the land is especially adapted to corn, sugar beets and vegetables. The rich, dark soil in certain sections is especially suitable for garden crops.

Two canning factories, at Merlin and Tilbury, furnish a good market for tomatoes, beans and other canning vegetables; the up-to-date farmers are doing a profitable and ever increasing business in seed corn with the Eastern Ontario dairymen; thousands of bushels of onions are produced each year with large profits; while hundreds of cars of sugar beets shipped every year from the railway sidings in the township, afford an excellent source of revenue. More than \$75,000 was paid in Tilbury East for this one crop in 1912.



Tile Draining Brings Large Profits.



Tilbury East Exhibit at Corn Show.

Transportation facilities are excellent. Though the township is only about 12 miles long, four railroad lines cross it; and the River Thames, navigable as far as Chatham and on which there is a daily boat service to Detroit, also affords cheap water transportation for part of the year.

The great Tilbury East gas fields, situated in the southern part of the township along Lake Erie, produce millions of cubic feet of natural gas, which is piped to Windsor, Chatham, Sarnia, Wallaceburg, and dozens of lesser places. The farmers of the township who have no gas wells on their own farms are in a position to secure gas much more cheaply than outsiders, the maximum price being 15 cents per 1000 cubic feet.

This cheap fuel is also attracting to the township certain lines of manufacture. Four brick and tile factories have already located here in the last two or three years and cannot nearly supply the demand for their product. With the building of the hydro-electric transmission line, to be constructed through Tilbury East this year, another cheap source of power will be available to the manufacturers and farmers of the township.

Further information will be cheerfully supplied on application to David Fletcher, Fletcher, Ontario.

TILBURY

Remarkably rapid growth has characterized the town of Tilbury, situated on the border line of Kent and Essex, the two Garden Counties of Canada. Its population, 2000, according to recent estimates, is noted for progressive spirit.

Close proximity to the Tilbury East gas field, the largest natural gas field in Ontario, ensures cheap fuel for domestic purposes and cheap power for manufacturers. Located on the main line of the Michigan Central and the Western Ontario division of the Canadian Pacific, Tilbury's shipping facilities are excellent. That these advantages are appreciated by manufacturers is shown by several recent acqui-