

Engine Truck Wheels—Diameter.....	30 in.
Journals.....	5½ in. x 10 in.
Wheel Base—Driving.....	14 ft. 0 in.
Rigid.....	14 ft. 0 in.
Total engine.....	22 ft. 2 in.
Total engine and tender.....	50 ft. 0 in.
Weight—On driving wheels.....	120,010 lbs.
On truck.....	25,220 lbs.
Total engine.....	145,230 lbs.
Total engine and tender, about.....	245,000 lbs.
Tender—Diameter of wheels.....	33 in.
Journals.....	4½ in. x 8 in.
Tank capacity, U.S. gal.....	5,000
Imperial gal.....	4,170

The Saxon Engine Works at Chemnitz, Germany, where the C.P.R. is having 20 compound freight locomotives built, were founded by Richard Hartmann, in 1845. Hartmann had for nine years previously carried on the business of building engines and boilers, and the repair and manufacture of machinery for cotton mills. The first locomotive was completed in 1848, T. Steinmetz being the engineer in charge of the works. From that date until 1900, up to which time 2,500 locomotives had been completed. In 1870 the works were transferred to a joint stock company, and in 1897 the capital had been increased to the equivalent of \$3,000,000. The works in 1902 employed over 5,000 persons, up to which date 2,800 locomotives had been delivered. The locomotives turned out included 2,238 single expansion type, 481 2-cylinder compound type and 81 4-cylinder compound type; of which 2,007 were standard gauge and 793 were built to different gauges; while 1,813 were built for German owners and 987 were

shipped to owners in 14 different countries. In addition to locomotives of any construction and gauge, there are made at the works steam engines for all purposes, including electric power stations, machine tools for locomotive shops and railway works, and ship-yards, appliances for the transmission of power and control weighing apparatus for ascertaining

and regulating axle pressure for locomotives and railway carriages. At the Paris Exposition of 1900, a Grand Prize for three locomotives was awarded to the Saxon Engine Works. The catalogue from which these particulars are extracted contains illustrations of over 50 engines of different types turned out by the works.

## THE ST. THOMAS BRASS COMPANY, Ltd.

MANUFACTURERS OF

**Brass Castings** For the Wearing Parts of Locomotives.

**Journal Bearings** For Passenger and Freight Car Service.

**Miscellaneous Brass Castings** For Engine and Car Work

Works and Office: ST. THOMAS, ONT.

## OCEAN STEAMSHIP AGENCIES

### American Line.

NEW YORK — SOUTHAMPTON.

Sailing from New York, Wednesdays, at 10 a.m.

PHILADELPHIA — LIVERPOOL.

Sailing from Philadelphia on Saturdays.

### Atlantic Transport Line.

NEW YORK — LONDON

Sailing from New York on Saturdays.

### Leyland Line.

BOSTON — LIVERPOOL.

Sailing from Boston on Wednesdays.

### Red Star Line.

NEW YORK — ANTWERP — PARIS.

Sailing from New York, Saturdays, at 10 a.m.

### White Star Line.

NEW YORK — QUEENSTOWN — LIVERPOOL.

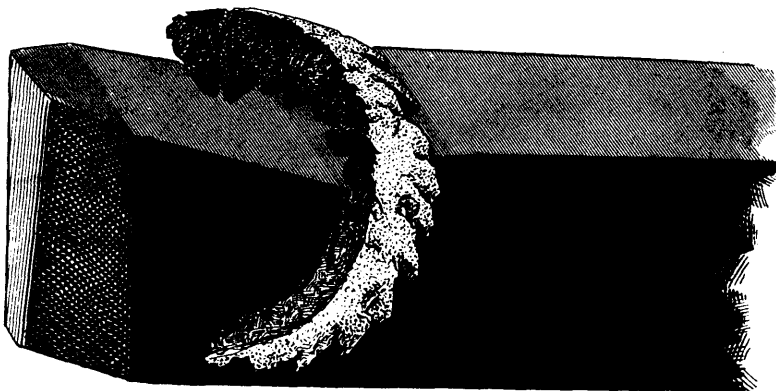
Regular Weekly Service.  
Bi-weekly Service after April 1st.

Sub-agents at all principal points in Ontario, where accommodation can be reserved and tickets secured.

**CHAS. A. PIPON**

Passenger Agent for Ontario,  
41 King St. East, Toronto.

## The JESSOP High-Speed . . . TOOL STEEL



Is  
Unexcelled  
for Turning  
Locomotive  
Tires,  
Car Wheels,  
Shafting,  
Etc.

½-inch cut,  
¼-inch feed.  
Speed 20 to 40  
feet per minute.  
Tools hardened  
by heating  
white hot and  
cooled in air.

CAN NOT BE  
BURNED.

**WM. JESSOP & SONS, Limited, Sheffield, Eng.**

Chief American Office, 91 John St., New York. C. L. BAILEY, Agent, 80 Bay St., Toronto.

## DOMINION BRIDGE CO. Limited

MONTREAL, P. Q.

# BRIDGES

TURNTABLES : : :  
ELECTRIC CRANES  
ROOF TRUSSES : : :  
STEEL BUILDINGS

Structural METAL WORK of All Kinds

Beams, Channels, Angles, Plates, Etc., in Stock