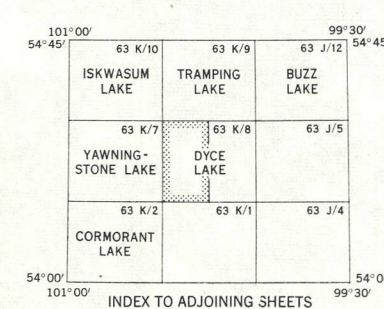
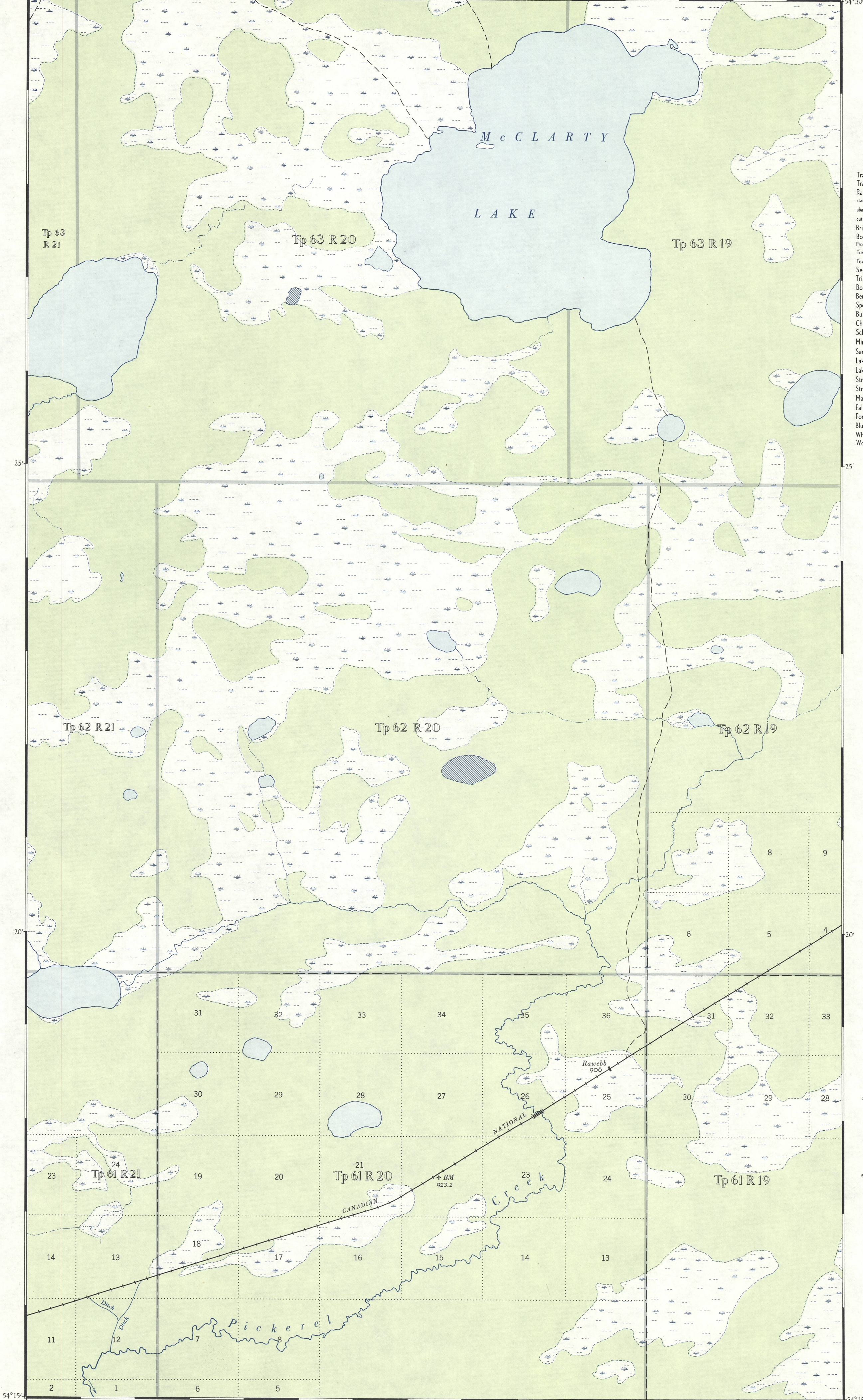




CANADA
DEPARTMENT OF
MINES AND TECHNICAL SURVEYS
SURVEYS AND MAPPING BRANCH

REFERENCE

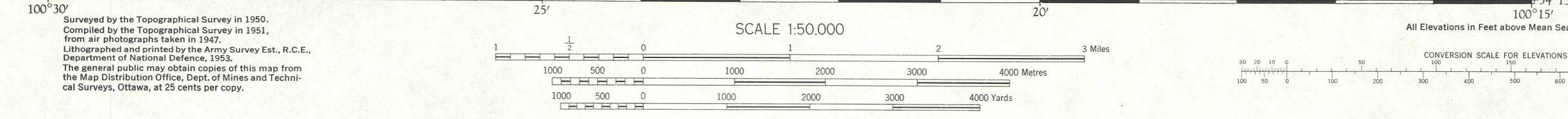
- Tractor Route, Snow or Winter Road
Trail or Portage
Railways:
standard gauge, single track
abandoned
cutting, embankment
Bridges: road, railway
Boundaries:
Provincial
Township, surveyed
Township, unsurveyed
Section Line
Triangulation Station
Boundary Mon., Survey Mon.
Bench Mark
Spot Elevation, (in feet)
Building
Church, Cemetery
School, Post Office
Mine or Open Cut
Sand or Gravel Pit
Lake, intermittent or Slough
Lake or Shoreline, indefinite
Stream, intermittent or dry
Stream, definite
Marsh or Swamp
Falls, Rapids
Foreshore Flats
Bluff, Cliff or Escarpment
Wharf or Pier
Wooded Area



MAGNETIC DECLINATION 13° 28' EAST,
AT CENTRE OF SHEET 1952.
Annual magnetic change 3' westerly.

DYCE LAKE
WEST OF PRINCIPAL MERIDIAN
MANITOBA
63 $\frac{K}{8}$ WEST HALF
FIRST EDITION
(PRELIMINARY)

McGILL UNIVERSITY
MAP COLLECTION
GEOGRAPHY DEPARTMENT
MONTREAL



Surveyed by the Topographical Survey in 1950.
Compiled by the Topographical Survey in 1951.
From all photographs taken in 1947.
Lithographed and printed by the Army Survey Est., R.C.E.,
Department of National Defence, 1953.
The general public may obtain copies of this map from
the Map Distribution Office, Dept. of Mines and Technical
Surveys, Ottawa, at 25 cents per copy.

SUPERSEDED
EDITION