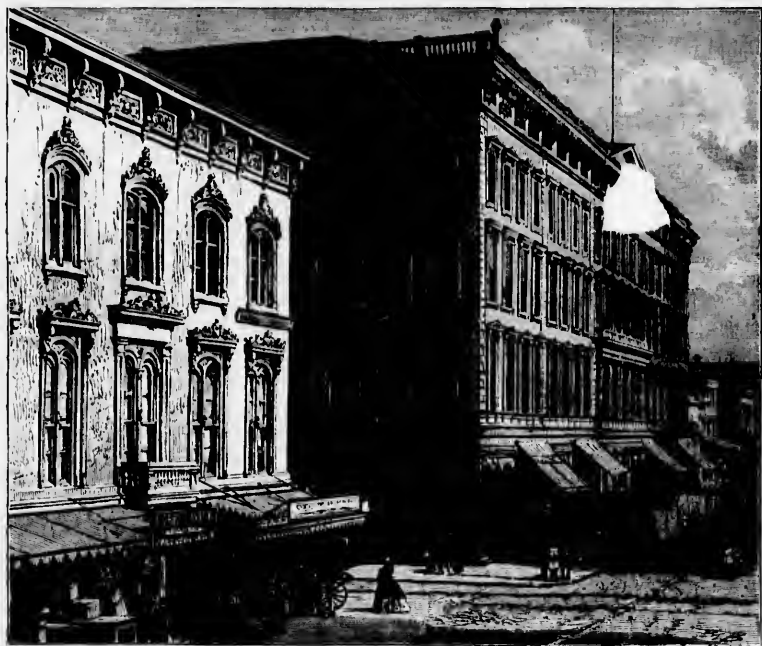


and much of it consists only of barren volcanic plains, lying between precipitous "though not lofty ranges." That portion of California lying south and east of the southern insolation of the Coast ranges and the Sierra comprises an area of fully 50,000 square miles. It is also thinly inhabited, except along the coast, and comprises among other portions the San Diego and San Bernardino counties, which have no drainage towards



AN HOTEL IN SAN FRANCISCO.

the sea. It is the Great Basin of California. The fertile portion of it is Los Angeles county, which comprises some of the best lands in the State.

Towards the south-eastern border of the State is a district 70 miles wide by 140 miles long, which belongs to the Colorado River, and is known for its bareness at the Colorado Basin. The soil is chiefly sand, here and there packed into low hills, which are continually shifting.

The climate, as might be supposed from the foregoing description, is varied according to the region. If it can be compared with any portion of the world probably Western