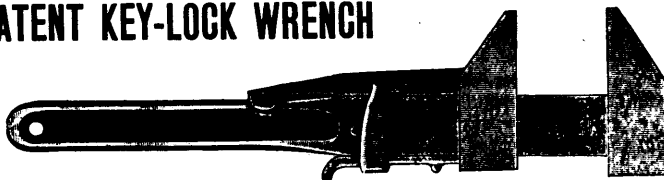


The HOUGHTON PATENT KEY-LOCK WRENCH

Is the strongest and most durable made. It has no equal for ease and rapidity of adjustment.

Manufactured in all sizes by the



PARIS TOOL MANUFACTURING CO., Ltd. Paris, Ont.

STEAM BOILER & PLATE GLASS INSURANCE CO.

OF CANADA

Head Office, - - - LONDON, Ontario.

THE unexpected generally happens. Have your boiler inspected and insured; it pays to know that you are right. Don't trust to luck. Will your boiler stand the pressure at its weakest point? Can you judge it?



INSPECTION makes you safe; insurance indemnifies you against loss. Have a competent inspector determine what pressure is safe, and the benefit of his advice and inspection.

o o o o o o o o

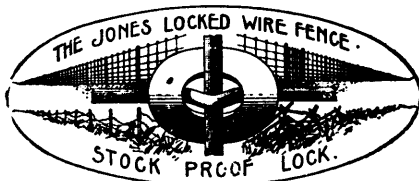
Subscribed Capital \$200,000. Full Government Deposit.

The Locked Wire Fence Company, Ltd.

INGERSOLL, ONT.

The best Fence made for farms & railroads

If you have not received our circular, with full information & particulars, send for it at once.



OUR success at the recent fairs is unprecedented. Every practical farmer who examined our fence was captivated, and declared that he would build no other.

Duplex

AND SINGLE

Steam

AND POWER

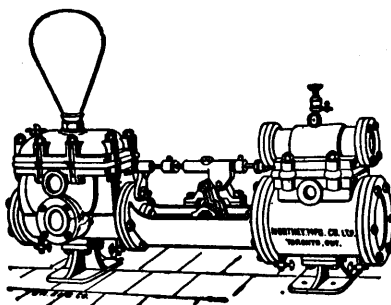
Pumps

...

Hydraulic

Presses

For all purposes.



Northey

Mfg. Co.

Limited

TORONTO, ONT.

LAURIE ENGINE CO., Montreal, Sole Agents Quebec Province.

Gold Medals, Paris, 1878:1889.

JOSEPH GILLOTT'S

Of Highest Quality, and Having Greatest Durability are Therefore CHEAPEST.

PENS

Commercial.

MONTREAL MARKETS.

MONTREAL, April 26th, 1895.

ASHES.—There have been some moderate sales to Britain for shipment by first direct steamers, and values are a shade firmer. No. 1 pots are quoted at \$4.05 to 4.10; seconds, \$3.70 to 3.75; pearls are relatively easier at \$5.65 to 5.75. Receipts are a little more liberal, a few fair lots having come in during the last few days. Stock at present stands 220 of pots and 44 of pearls.

CEMENTS AND FIREBRICKS.—An import order for a lot of about 3,000 barrels of English cement, the first important order of the season, was placed last week at \$1.95 for a consumer, the price being considered a good one. Jobbing orders from stock, which is low, are being filled at \$2.05 to 2.10 for English, \$1.90 to 2.00 for Belgian, and the market will be in good shape for new arrivals, which are expected about 3rd May. Firebricks are jobbing at former prices.

DAIRY PRODUCTS.—Beyond a moderate local demand for fresh made creamery and dairy, the butter market is very dull and easier. We quote fresh creamery 19 to 20c.; Townships dairy 16 to 18c.; Morrisburg, 16 to 17c.; Western, 14 to 16c. per lb. Old stock is very difficult to sell. In cheese there is almost an absence of business. From 9½ to 9¾c. per lb. is about the range for old cheese, and 9c. for new fodder cheese. Exports last week were 12,060 boxes. Eggs are lower at 11 to 12c. per dozen.

MONTREAL GRAIN STOCKS IN STORE.

	April 15, '95.	April 22, '95
Wheat, bushels.....	440,845	399,707
Corn, "	5,648	4,382
Oats, "	191,195	190,564
Rye, "	4,533	4,533
Peas, "	104,113	104,321
Barley, "	1,438	171
Total grain.....	747,772	703,678
Flour	23,446	22,350
Buckwheat.....	10,233	20,749

DRY GOODS.—In this line of trade there is no very marked improvement visible. City retailers report business good on bright days, but there has been a good deal of showery weather to keep shoppers at home, and from this cause and bad roads country stocks are not greatly broken into, so that sorting business with wholesale houses is not as active as is generally looked for at the season. Country remittances are much complained of by our merchants.

GROCERIES.—Letters from commercial travelers continue to be full of the subject of bad roads, some of them reporting the refusal of livery men to hire out teams to take them to interior points, and at many places on the railroads business is reported poor, owing to the scarcity of farmers coming in to trade. As can readily be imagined, therefore, the distribution of merchandise is but a moderate one. Among city jobbers, too, there is not a great deal doing. The tea market is very dull, and not much enquiry reported, except for low grade Japans, which are not readily available. There are yet no reliable indications as to how the market in Japan will open for new crop. Coffees are steady with some moderate trading reported. We quote Rio 19 to 21c.; Maracaibo, 20 to 22c.; Java, 24 to 27c.; Mocha, 28 to 30c. per lb. In sugars all the demand is for the two extremes, granulated and low grade yellows; medium and bright yellows are not wanted at all. At the factories 3½c. per lb. is still the nominal figure for standard granulated, but fair lots are being done at the quarter. In yellows 27-16c. is reported the lowest figure, though some claim to have done a shade better. Barbadoes molasses is quoted at 29½ to 30c. in lots, and 32½c. the single puncheon. The milling company have made no revision of the price list for rice as yet. Dried fruits are dull and without change.

HIDES AND TALLOW.—Hides continue exceedingly scarce, and dealers are paying 7c.