

Leading Manufacturers.

-THE-

Toronto Paper Mf. Co. WORKS at CORNWALL, Ont.

CAPITAL, \$250,000.

JOHN R. BARBER, (President and Man'g Director.) CHAS. RIORDON, (Vice-President.) EDWARD TROUT, (Treasurer.)

Manufactures the following grades of paper: ENGINE SIZED SUPERFINE PAPERS, WHITE AND TINTED BOOK PAPER, BLUE AND CREAM LAID AND WOVE FOOLSCAPS, POSTS, ETC. ACCOUNT BOOK PAPERS.

Envelope and Lithographic Papers. Colored Cover Papers, superfinished. Apply at the Mill for samples and prices. Special sizes made to order.

1828. Established 1828

J. HARRIS & CO. (Formerly Harris & Allan,) ST. JOHN, N. B.,

New Brunswick Foundry, Railway Car Works, Rolling Mill.

Manufacturers of Railway Cars of every description, Chilled Car Wheels, Hammered Car Axles, Railway Fish-Plates, Hammered Shafting and Shapes, Ship's Iron Knees and Nail Plates.

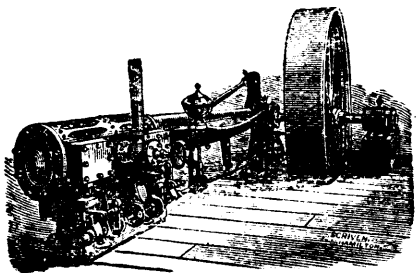
THE OSHAWA MALLEABLE IRON CO

Manufacturers of MALLEABLE IRON, CASTINGS

TO ORDER FOR ALL KINDS OF AGRICULTURAL IMPLEMENTS And General Purposes. OSHAWA, CANADA.

BLIGH & CO., ST. CATHARINES, Ont., PAINT & COLOR MANUFACTURERS.

SPECIALTIES Coach Painters' Colors, Cottage Colors, (Ready Mixed) Reds for Agricultural Implements.



THOS. WORSWICK, GUELPH, ONT.,

Manufacturers of the WORSWICK "BROWN" AUTOMATIC OUT-OFF ENGINE.

For durability, accessibility of parts and economy of fuel, this engine has no equal. Boilers of Steel or Iron, made to order, Shafting, Pulleys, and Hangers furnished on short notice.

TORONTO PRICES CURRENT.—Oct. 16, 1884.

Table with multiple columns: Name of Article, Wholesale Rates, Name of Article, Wholesale Rates, Name of Article, Wholesale Rates. Categories include Breadstuffs, Groceries, Hardware, and various other goods.