

MUNICIPAL ENGINEERS, CONTRACTORS AND MATERIALS

WILLIS CHIPMAN

H. n. Grad. McGill University.
M. Can. Soc. C.E. M. Am. Soc. C.E.
Mem. Am. W.W. Ass'n.
WATERWORKS, SEWERAGE WORKS, GAS
WORKS, ELECTRIC LIGHT AND
POWER PLANTS
Reports, Surveys, Construction, Valuations
103 BAY STREET - TORONTO

RODERICK J. PARKE
Consulting Electrical Engineer

MUNICIPAL ELECTRIC LIGHTING
COMMERCIAL POWER INSTALLATIONS
Isolated Electric Lighting and Power Plants for
Manufactories. Estimates, Specifications, Advice
on Ten-ters, Valuating.
310 Temple Building - TORONTO, CANADA

W. T. ASHBRIDGE, C.E.

A. M. CAN. Soc. C.E.
609 Temple Building, - TORONTO
Special Attention given to
MUNICIPAL IMPROVEMENTS
Sewerage Works, Water Supply,
Pavements, Concrete Construction, Etc.

J. EMILE VANIER
CIVIL AND HYDRAULIC ENGINEER

(Graduate of the Polytechnic School.)
IMPERIAL BUILDING, MONTREAL.
SPECIALTIES:
Waterworks, Sewers, both Steam and Hydraulic
Power Plants, Foundations, Paving, etc.
Valuations made of Waterworks Systems, Arbit-
rations, etc.
Plans and Estimates for Public Buildings.

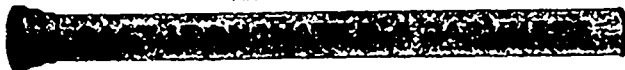
Please mention the **CONTRACT RECORD**
when corresponding with advertisers.

ST. LAWRENCE FOUNDRY CO.
OF TORONTO, LIMITED.
ESTD 1852
ARCHITECTURAL IRON & STEEL WORKS
FORGINGS & CASTINGS
CAST-IRON GAS, WATER & SEWER PIPES.
SPIKES & BOLTS.
PATTERNS & MODELS.
OF EVERY DESCRIPTION FOR
BUILDERS, MACHINISTS
& RAILWAYS.
READY CASTINGS A SPECIALTY.
262 TO 268 FRONT ST. EAST. TORONTO.

WATER CRANES
INDICATOR VALVE POST
FOOT AND CHECK VALVES
2-3 & 4 WAY HYDRANTS

Montreal Pipe Foundry Co. Ltd.

SUCCESSORS TO
DRUMMOND, McCALL PIPE FOUNDRY CO. LTD
MANUFACTURERS OF



OFFICES **MONTREAL**
CANADA LIFE BUILDING

Cast Iron Water and Gas Pipes, etc.

Londonderry, Nova Scotia

SPECIAL CASTINGS
FLANGE PIPE
BRANCHES
HYDRANTS
VALVES
VALVE BOXES

LONDONDERRY PIPE FOUNDRY

Notice to Contractors

WE can save you money on.....
Granolithic or Crushed Stone
of any size, as we have the most complete plant in
Canada. You will consult your own interests by getting
our prices. We also make a speciality of Slate, Tile,
Granite and all kinds of Stone. Crusher at Jarvis
street wharf
THE POWELL GRANITE & MARBLE CO'Y,
Phone 3440. Office, 482-484 Yonge St., Toronto

PORTLAND GEMENT

For Sidewalks, Pavements, Heavy Masonry and Concrete.

MANUFACTURED BY . . .

Write for Circular
and Prices.

The Rathbun Company
DESERONTO, ONT.

ALEX. GARTSHORE, President. J. G. ALLAN, Secretary and Treasurer. JAS. THOMSON, Vice-President and General Manager.
THE GARTSHORE-THOMSON PIPE & FOUNDRY CO.
LIMITED.

Manufacturers of:::

Flexible and Flange Pipe,
Special Castings and all kinds of
Waterworks Supplies.

CAST IRON PIPE

3 inches to 60 inches diameter.

For Water, Gas, Culvert and Sewer

HAMILTON, ONT.