

front rather deeply impressed, labrum short and transverse; mandibles short, blunt, piceous; antennæ minute, a basal very short joint scarcely as long as wide supporting a second of the same thickness, twice as long as wide; in the final moult, apparently of one or two very short joints bearing a terminal short tuft or pencil of fine closely-placed hairs. Behind and a little outside the antennæ are three ocelli in a triangle. (Fig. 10.)

The pronotum is longer than any of the following segments, the anterior outline somewhat semicircular, without any anterior angles,



FIG. 10.—*Ignotus anigmaticus*, larva: *a*, ocelli; *b*, antenna; *c*, a long hair.

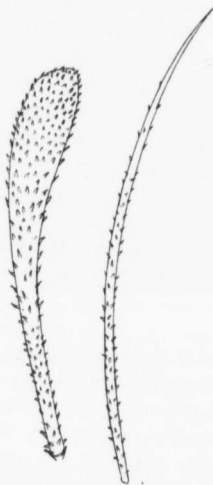


FIG. 11.—Larval hairs.



FIG. 12.—Middle leg of male larva.

meeting the broadly arcuate basal margin in an undefined obtusely rounded angle. The following thoracic and abdominal segments subequal, short and strongly transverse, the ninth shorter and narrower. The vestiture is composed of hairs and bristles of three kinds; the hairs are simple, long and fine, the bristles are taper-pointed or clavate, and sometimes abruptly acuminate, and throughout thickly hispid with minute black points or spines. (Figs. 10, 11.)