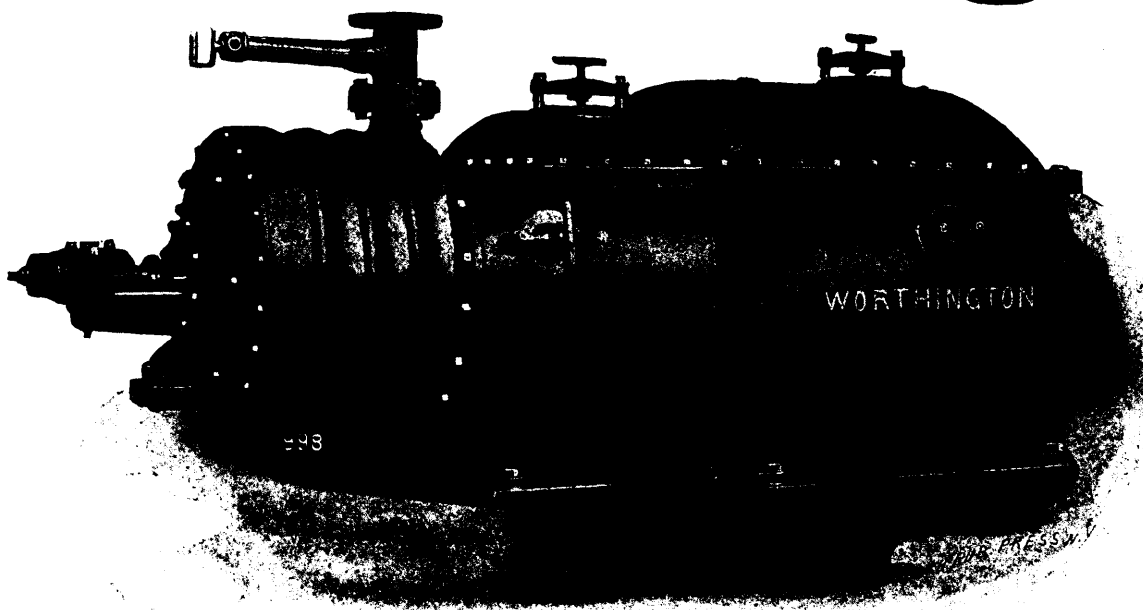


WORTHINGTON Turbine Mining Pumps



are designed especially for DEEP LEVEL WORK, and for heads up to 2,000 ft.

They represent the greatest development in pumping machinery since the invention of the Duplex Steam Pump by Henry R. Worthington.

They have shown EFFICIENCIES as high as 86%, and are reliable, durable and exceedingly simple.

Four Stage Turbine Pump, with the Driving Motor enclosed in a cast iron housing. This machine was constructed for mine service in Mexico, where the mines are frequently flooded, and the design permits continuous pumping.

The John McDougall Caledonian Iron Works Co. Ltd., **MONTREAL**
Builders for Canada

THE CANADIAN MINING MANUAL

FOR 1904

14th Year

This standard work of reference to the MINERAL INDUSTRIES OF CANADA will be issued shortly. It is a

COMPLETE MINING DIRECTORY

to all BLAST FURNACES, COLLIERIES, METAL MINES, MILLS and SMELTERS of the Dominion, and contains authentic details concerning the HISTORY, ORGANIZATION, CAPITAL, OFFICERS, OPERATIONS, PLANTS, ACCOUNTS and DIVIDENDS of each corporation.

ENDORSED BY THE GOVERNMENT AND THE FINANCIAL AND MINING PRESS

For advertising space and for advance copies address

THE REVIEW PUBLISHING CO. LIMITED,

157 St. James Street, Montreal, Canada.