

## KNAPSACK SPRAYER.

In reply to frequent inquiries respecting a portable sprayer for the garden and vineyard, we have pleasure in referring our readers to the advertising columns, where several excellent pumps are offered. The Field Force Pump Co., of Lockport, have kindly loaned us a cut of their new sprayer, which is on the same principle as the others, but differs in shape. The copper boiler holds about six gallons, and the air chamber above is so arranged that it keeps up the pressure even after the operator has stopped pumping. The nozzle used is the celebrated "Ver-morel."

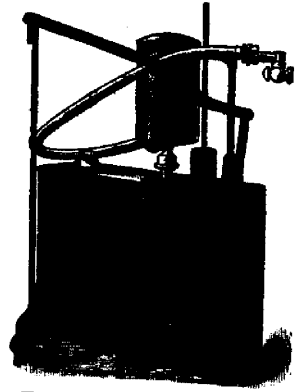


FIG. 36.—NEW KNAPSACK SPRAYER.

## HOW TO GROW TOMATOES TO PERFECTION.

Mr. C. L. Allen, writes in the *American Agriculturist* as follows on this subject: Because the generous nature of the tomato yields bountifully with seemingly little care and attention, the general impression prevails that the plant requires but little attention. This is a sad mistake, for there is not a vegetable in the garden that is so gross a feeder, nor one that so readily pays for all the food and care given as the tomato. To grow it to the greatest perfection, the hills should be dug out to the depth of two and a half feet; at the bottom there should be a half bushel of well-rotted manure; above this let the soil be an equal mixture of loam and manure thoroughly mixed. The hills should be at least six feet apart. Let the situation be open, warm, airy. When the fruit begins to set, mulch with clean straw or very small brush. Under these conditions six plants will furnish sufficient tomatoes for a family of twelve persons. Whatever variety may be planted in this manner, the result will show specimens for size, smoothness, and esculent properties, unknown to the variety when grown in the ordinary manner.

