

The Winnipeg Limited

The Train of Ease, Elegance and Excellence

The comfortable way to go for a trip—south, east or west—superb equipment, observation, buffet library car, standard and compartment sleepers.

Leaves C. N. R. Depot every day 5.20 p.m.; arrives in St. Paul-Minneapolis early the following morning.

Pleasant company, pleasant surroundings all the way.

S. S. "Minnesota" sails from Seattle for the Orient, March 12.

S. S. "Dakota" sails from Seattle for the Orient April 29.

R. J. SMITH, D.F. & P.A.,
447 Main St., Winnipeg

GREAT
NORTHERN
RAILWAY

Pulls Stumps or Standing Trees.

Clears a two-acre circle with one sitting—pulls anything the wire rope will reach; stumps, trees, grubs, rocks, hedges, etc. A man and a boy with one or two horses can run the

COMBINATION STUMP PULLER,

Stump Anchored or Self Anchoring.

A minute and a half is all it takes for the ordinary stump. No heavy chains or rods. Note the strong wire rope with patent coupler—grabs the rope at any point. Does not chafe rope; far ahead of old-style "take-ups." Smallest rope we furnish stands 40,000 lbs. strain. It generates immense power and it's made to stand the strain. We also make the Iron Giant Grub and Stump Machine, the L. X. L. Grubber and Hawkeye Grub and Stump Machine. Write for free illustrated catalogue.

Largest manufacturers of Stump Pullers in the World.
Established 1894.

WILNE MFG. CO.,
9th St., Monmouth, Ill.

PRESIDENT
R. SECORD
VICE-PRESIDENT
GEO. KOY
MANAGER
A. W. TAYLOR
BANKERS
Bank of Nova Scotia,
Edmonton
TREASURER
F. P. HOBSON

The Alberta Mutual Fire Insurance Co.

HEAD OFFICE: EDMONTON, ALBERTA

The oldest Incorporated Farmers' Mutual in the Northwest Territories
Correspondence solicited. Agents in unrepresented districts wanted
FARMERS, INSURE IN A HOME INSTITUTION

Power For the Farmer



Windmills

The Canadian Airmotor

8, 10, 12, 13, 14, 15 and 16 feet

Gasoline Engines

The Stickney Line

2½, 4½, 6, 9, 12, 15 and 25 H. P.

Tread and Horse Powers

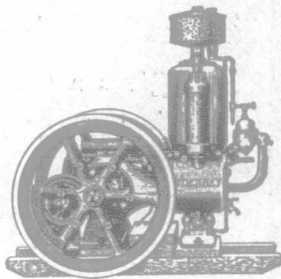
The Celebrated Bell Line

We also handle Pumps, wood and iron; Tanks, steel and wood; Grain Grinders, Saw Frames and Saws, Feed Cutters, Rife Hydraulic Engines and the famous

Empire Cream Separators

Write for Our New Catalogue—Free

For the Asking



Ontario Wind Engine & Pump Co., Ltd.

83-91 Chambers St., Winnipeg, Man.



HARD CASES OF RHEUMATISM

cured only by the

GALVANO-FARADIC,

also

Nervous Weaknesses, Female Disorders.

Appliances sent to patients. Free assistance given during treatment.

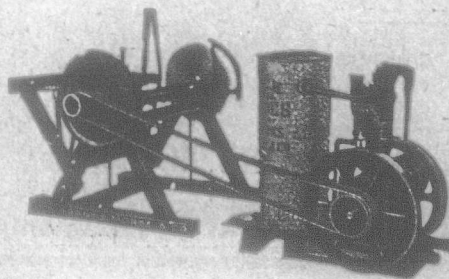
Mr. CHAS. R. WHATFORD, 135 Smith Street, Winnipeg, writes:

"I was attacked by Rheumatism. Doctors could not help me; they

advised me to leave this cold country at once, but your GALVANO-FARADIC cured me, and I am thankful to say I am now feeling as well and as strong as I had been all my life."

If you cannot call cut out and send this coupon.

Prof. VanBergh, 265 Laura Street, Winnipeg, Man.
DEAR SIR,—Kindly forward me your pamphlet for the Galvano-Faradic.



SOME WON'T BELIEVE IT

A Fairbanks-Morse 2 H.P. Jack-of-all-Trades

GASOLINE ENGINE

will saw wood as fast as two men can handle it. It also pumps water, hells corn, grinds feed, makes butter, runs cream separator, in fact furnishes power for all farm purposes. Every farmer should have one

Out out this complete advertisement and send it to

THE CANADIAN FAIRBANKS COMPANY, LTD., 92-94 Arthur St., Winnipeg.

Please send me (without charge) particulars about Jack-of-all-Trades Engine for farm use.

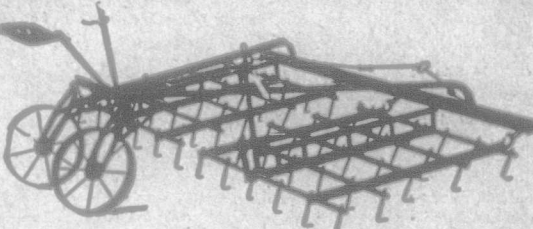
I may want a _____ H.P. Name _____
Engine for _____ Address _____ Prov _____

Planet Jr. Tools

are known and used the world over, because they make Planting, Hoeing and Cultivating easy. Our new 1906 catalog describes and illustrates Seeders, Wheel Hoes, Harrows, Riding Cultivators (one and two-row), Sugar Beet and Orchard Cultivators, etc. No. 4 Planet Jr. is the most popular combined tool made. A perfect seeder, wheel hoe, weeder, cultivator and plow. Sows seed in continuous rows or in hills 4, 6, 8, 12 or 24 inches apart. Easily changed and is useful at every stage of the garden work. No. 12 Double Wheel Hoe will enable you to hoe every day two acres of onions or any similar crop and do it faster and better than three men with hand hoes. It runs either astride or between the rows and kills all weeds. OUR 1906 CATALOGUE shows many garden scenes at home and abroad that will interest you. Be sure and get it. We mail it free on request.

S. L. ALLEN & CO., Box 1108 F, Philadelphia, Pa.

Don't Worry About that tiresome job of harrowing this spring for it will be a pleasure if you have a



New Model Harrow Cart.

(Patented October 23, 1901.)

Greatest labor saver of the 20th Century. Made of all steel, castor wheels, fits any harrow. TRY ONE, THEY ARE CHEAP. Write for further particulars.

THE HARMER IMPLEMENT CO.
Dept. 125, Winnipeg, Man.

The Calgary Marble & Granite Works

211 Tenth Avenue West

DEALERS IN AND MANUFACTURERS OF

Marble and Granite Monuments

Cemetery Fencings, Mantelpieces

Tablets, Butchers' Slabs, Candy

Slabs, Imposing Stones, Etc.

Prices the lowest for best material and workmanship. The largest monumental works in the Northwest Territories. No connection whatever with any Eastern firm.

The Somerville Company, Proprietors