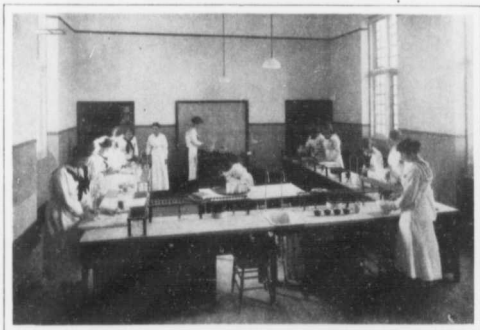


each girl is requested to contribute to the Church offertory a fixed sum weekly by the envelope system. The amount (which should in no case be less than five dollars a year) should be determined by the ability of each contributor and that of her parents.

Health

THE health of pupils of the School comes under the care of a trained and experienced Matron. The School Building includes an Infirmary well planned and suitably furnished, with separate kitchen, bath-rooms and every convenience for the care and comfort of girls who are indisposed. Ordinary ailments not of too serious a nature receive all proper care and attention in this Infirmary. For infectious illnesses other isolated rooms are provided, with everything necessary to the safe and proper treatment of such cases, and a special Nurse is employed.

The best medical advice and attendance are always provided.



DOMESTIC SCIENCE LABORATORY