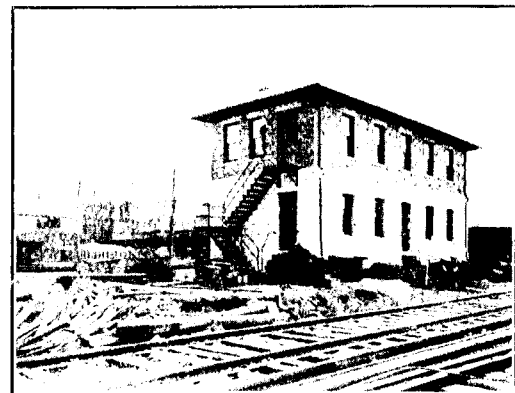
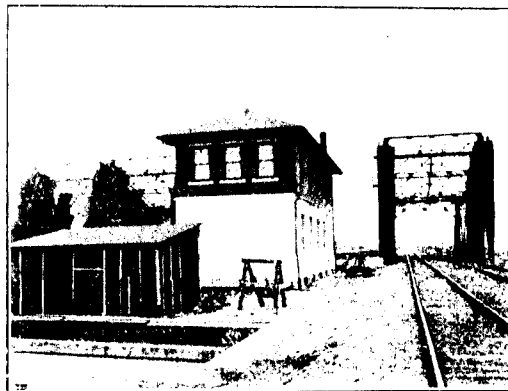


**Four Views of  
Interlocking Power for Lift Bridges  
erected by the  
Lake Shore and Michigan Southern R. R.  
at  
Indiana Harbor  
Concrete Blocks in this building  
produced on "IDEAL" Machines**



**L. S. & M. S. RAILROAD SPECIFIES CONCRETE BLOCKS**  
made on the

# IDEAL

## Face Down Interchangeable CONCRETE BLOCK MACHINE

Upon investigation these blocks were found by the engineers of the Railroad Company to be superior to all others and verified all claims made for this machine.

The "Ideal" is the only concrete block machine that legally makes blocks face down the only way for good results allowing a rich facing material with a coarser mixture at the back of the block.

The "Ideal" makes blocks of any form, angle or face design, varying widths and any length within its capacity.

Its parts are interchangeable, making its range and efficiency double that of other machines.

Other "Ideal" machines are Mixers, Sill and Lintel Machines, Brick Machines, Automatic Tamers, Ornamental Moulds of all sorts.

Visit our plant at South Bend, Ind., and see the great range and high grade of work the "Ideal" Machines turn out.

Estimates for complete up-to-date plants.

"Ideal" products command highest prices and afford greatest profits.

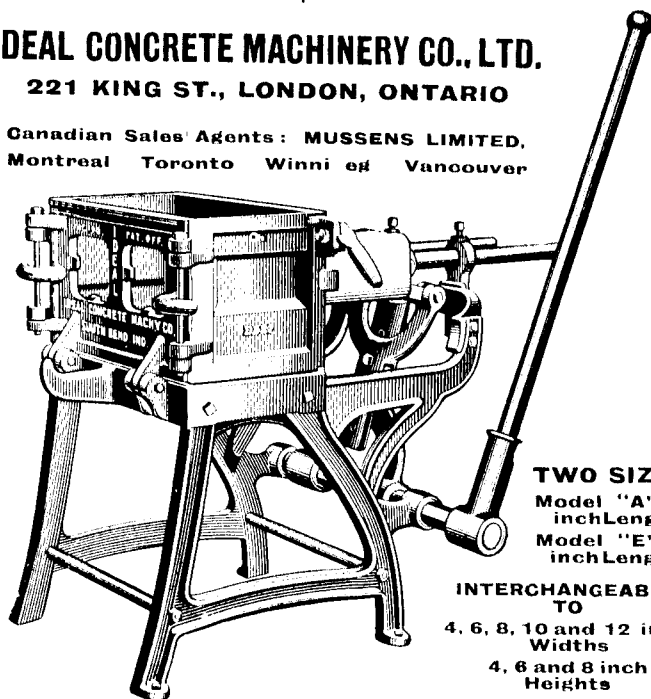
These machines were the sensation of the Chicago, Cleveland, and Minneapolis Cement Products Exhibits.

Write for free Catalogue, which gives full information on everything pertaining to the Concrete industry. Tells how to operate the "Ideal" Machines, how to figure costs, selling price and profit.

**IDEAL CONCRETE MACHINERY CO., LTD.**

**221 KING ST., LONDON, ONTARIO**

Canadian Sales Agents: **MUSSENS LIMITED,**  
Montreal Toronto Winnipeg Vancouver



**TWO SIZES:**  
Model "A" 16  
inch Length  
Model "E" 24  
inch Length

**INTERCHANGEABLE  
TO**  
4, 6, 8, 10 and 12 inch  
Widths  
4, 6 and 8 inch  
Heights