

# FARMER'S ADVOCATE

AND HOME JOURNAL  
THE ONLY WEEKLY AGRICULTURAL PAPER IN WESTERN CANADA

REGISTERED IN ACCORDANCE WITH THE COPYRIGHT ACT OF 1875

Vol. XLV

WINNIPEG, CANADA, AUGUST 11, 1909

No. 881

## Watches that Keep time

In buying a watch here you run no risk, for our watches are fully guaranteed by the makers, besides, we stand back of them with our guarantee to refund money if they do not prove satisfactory.

At \$10 postpaid, this is the best watch ever offered in the west—a 15-jewel "Reesor Special" movement, an accurate and reliable timekeeper, in a solid nickel solid back, dust-proof case, the same movement in 20-year goldfilled case \$14.00.

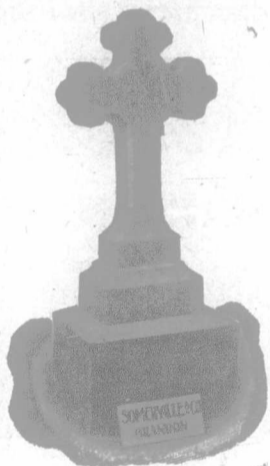
**D. A. REESOR**

"The Jeweler"

Issuer of Marriage Licenses

BRANDON, Man.

## BRANDON FOR MONUMENTS



Save 25 per cent. by dealing with SOMERVILLE & CO., of Brandon, Man. Largest stock, finest work, rock-bottom prices. Mail orders receive special attention. Send for catalogue.

**Somerville Steam Marble  
and Granite Works**

Rosser Ave., BRANDON, Man.

## HIDES AND RAW FURS

Our returns to shippers are the best advertisement we have. Make us a trial shipment and become a permanent customer.

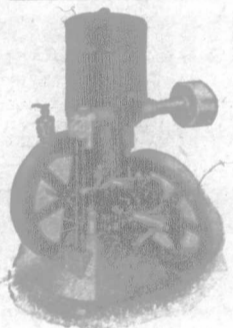
WRITE FOR PRICE LISTS

**The Lightcap Hide & Fur Co.**

LIMITED

P.O. BOX 1092

172-176 King St., WINNIPEG



## "PLAIN GAS ENGINE SENSE"

A Book for Gas and Gasoline Engine users. Supplied free with our Engines, or 60 cents postpaid.

"London" Engines 2½ and 4½ H.P.

CATALOGUE G.

**SCOTT MACHINE COMPANY Limited**  
LONDON CANADA



## Burned Out

but level-headed enough to have everything insured. Is your property, household goods or stock of merchandise insured? A policy of insurance covering loss by fire saves a man much humiliation and embarrassment in case of fire. The cost is trifling compared to the benefits to be derived. Let us figure with you. You will be surprised when you know how little it costs. Estimates cheerfully furnished.

**The Winnipeg Fire Assurance Company**  
Bank of Hamilton Chambers  
PHONE 179 WINNIPEG, MAN.  
Good Agents Wanted in Unrepresented Districts.

## Horsemen

We can supply you with up-to-date route cards, circulars, posters, receipt books, etc. Write for samples.

## SLOCAN PARK

The Choicest Fruit Land in the

## KOOTENAYS

Land the very Best.  
Level as a Prairie Farm.  
No Rocks or Stones.  
Water for Irrigation at every

lot.

No Frosts.

Uncleared or Partly Cleared, or

Wholly Cleared, as you like.

Partly Planted or Wholly

Planted, as you like.

Land Cared for and Improved

until you come at actual cost.

Prices and terms most advantage-  
tous to you.

You can go onto this Partly

Cleared and Planted Land and

## Make a Living From the Start

C. P. R. Station, Post Office,  
Express Office, Village, Large  
Mill, etc., within ten minutes  
walk.

Spur on the property. Thirty  
hours from the Prairie Markets  
without reshipment. Only 20  
miles from Nelson by rail. On  
the beautiful Slocan River. Good  
Fishing and Shooting. Title ab-  
solute.

The balance of these fine plots  
will be gone before fall. For full  
particulars write,

**THE KOOTENAY-SLOCAN  
FRUIT CO., Ltd.**

NELSON

B. O.

## SEED

BUCKWHEAT VETCHES, also  
open for shipments

Butter, Eggs and Cheese  
**LAING BROS.**

234, 236 and 238 King St.,

Winnipeg

## SUMMER SHIPMENTS OF GRAIN

Farmers who have still wheat or oats on hand should not delay now in getting the same shipped forward to Fort William and Port Arthur in order to secure the comparatively high prices which will be going for old crop grain during July, and probably the most part of August.

Farmers can only be sure of getting all that they ought to realize out of their grain by shipping it in carlots to Fort William or Port Arthur, and having it sold for them by a first class commission house, acting as their agent.

We possess unsurpassed facilities for handling wheat, oats, barley or flax for farmers who ship their grain themselves, because we are a reliable commission firm, of many years' standing and experience, well known over Western Canada as working solely on commission as agents for shippers, and we are prepared to handle to the best advantage for our customers all grain entrusted to us. We make liberal advances against railroad car shipping bills immediately we receive the same, and make prompt returns after sales have been made.

We always give our customers the name and address of the party or firm to whom we sell their grain.

When in Winnipeg we will be much pleased to have farmers visit us at our office in the Grain Exchange Building.

Please write us regarding prices and market prospects, and for shipping instructions, any information or advice about selling will be promptly and cheerfully given.

**Thompson, Sons & Company,**

GRAIN COMMISSION MERCHANTS

700-703-A GRAIN EXCHANGE, WINNIPEG, CANADA