

1992 GRADS

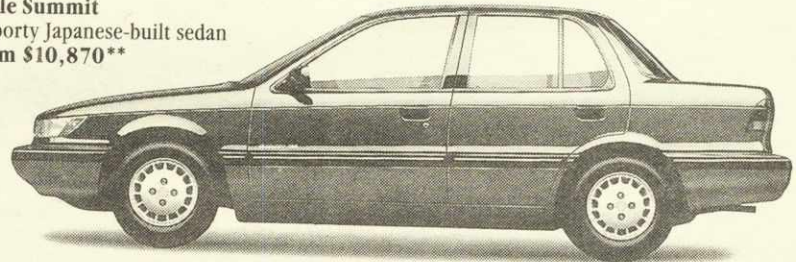
Chrysler starts you on your way!

\$750 Cash Rebate

in addition to any other incentives
PLUS NO PAYMENTS FOR 3 MONTHS
 on selected offers†



Plymouth Laser
 Sizzling looks and hot performance
 From \$13,735**



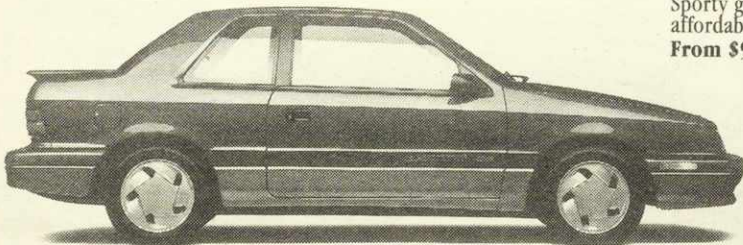
Eagle Summit
 A sporty Japanese-built sedan
 From \$10,870**



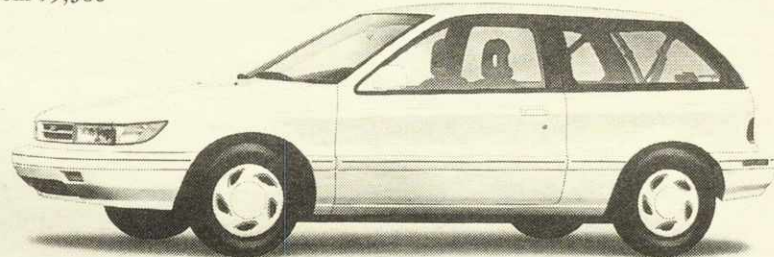
Jeep YJ
 The fun-to-drive convertible
 From \$12,165**



Eagle Talon
 Driving excitement from an award-winner
 From \$16,205**



**Plymouth Sundance/
 Dodge Shadow**
 Sporty good looks at an affordable price
 From \$9,995**



Plymouth Colt 200
 A high-spirited car with style
 From \$9,380**

You've worked hard for your education. And now Chrysler wants to start you on your way with incredible savings on your first new car or truck.

Whatever your taste, from the dynamic, affordable Colt to the adventurous Jeep YJ to the sleek Eagle Talon, you'll save an additional \$750 on any new 1992 Chrysler vehicle of your choice!

Make the best deal you can at any Dodge-Plymouth or Jeep/Eagle dealership, then present the certificate below for an additional savings of \$750!

And there's more good news. You can defer your payments for three months on Chrysler Credit approved financed purchases on 48-month terms on selected offers. You will pay the full amount, but Chrysler understands that when you're first starting out, this deferral option gives you a little extra time to start you on your way.†

It's that simple. And that affordable!

Visit your Dodge-Plymouth or Jeep/Eagle dealer today for a test-drive. Experience the Chrysler difference for yourself.

Buy with Confidence

With Chrysler's *Owner's Choice Protection Plan*, you can choose between our 7-year/115,000-kilometre Powertrain Warranty combined with a 1-year/20,000-kilometre bumper-to-bumper Basic Warranty, OR our 3-year/60,000-kilometre bumper-to-bumper Basic Warranty. (For Imports and Laser/Talon models only, the 3/60 Basic Warranty choice includes a 5-year/100,000-km Powertrain Warranty.) It's your choice and there's no deductible!*

*Some restrictions apply. See dealer for details.

**Manufacturer's suggested retail price base vehicle as at January 1, 1992. Price is subject to change. Price excludes freight, licence, tax and insurance. Dealer order may be necessary. Dealer may sell for less. Offer available until December 31, 1992. Vehicles may not be exactly as shown.



Chrysler Graduate Program

\$750

CASH REBATE
 on the 1992 Chrysler vehicle of your choice
 in addition to any other incentives
PLUS NO PAYMENTS FOR 3 MONTHS
 on selected offers†

†If you finance at regular rates for 48 months, you may choose to defer your first monthly payment for 90 days. You will pay the amount financed and interest for the 48 month term over 45 months (45 equal monthly payments with a 3-month delay to first installment). Chrysler Credit Canada Ltd. approval required. Offer applies to retail purchases for personal use only. Other Chrysler special reduced finance rate programs cannot be combined with this deferral offer. Purchase and take delivery of any eligible vehicle no later than December 31, 1992 from a participating dealer. See dealer for details.

Please complete:

Name: _____

Street: _____ City: _____

Province: _____ Postal Code: _____

Telephone: _____

Bring this certificate to the Dodge-Plymouth or Jeep/Eagle dealer of your choice to receive your cash rebate.

CHRYSLER

All you
 have to do
 is drive
 one.