

Fashions and Patterns

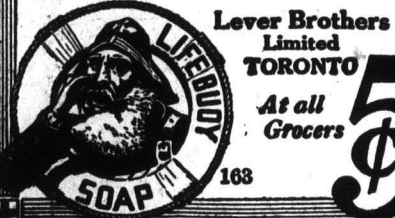


Health Triumphs

over disease every time you use Lifebuoy Soap. For its mild healing and cleansing oils are charged with cleansing properties that make it simply invaluable.

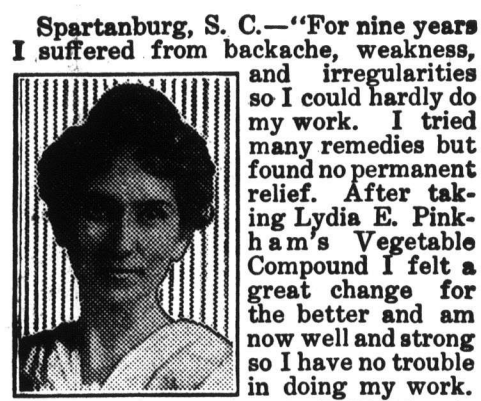
LIFEBUOY HEALTH SOAP

Mild and pure enough for Baby's skin—therefore eminently suitable for yours. The mild, antiseptic odor vanishes quickly after use.



SUFFERED NINE YEARS

Many Remedies Tried in Vain. Well and Strong After Taking Lydia E. Pinkham's Vegetable Compound.



Spartanburg, S. C.—“For nine years I suffered from backache, weakness, and irregularities so I could hardly do my work. I tried many remedies but found no permanent relief. After taking Lydia E. Pinkham's Vegetable Compound I felt a great change for the better and am now well and strong so I have no trouble in doing my work.

I hope every user of Lydia E. Pinkham's Vegetable Compound will get as great relief as I did from its use.”—Mrs. S. D. McABEE, 122 Dewey Ave., Spartanburg, S. C.

HORLICK'S

Malted Milk for the Home
A nourishing food-drink for All Ages. Anywhere at anytime. Delicious, sustaining. No cooking.

A Comfortable and an Attractive Lounging Robe—2009—This model is lovely for cotton or silk crepe, for lawn, cashmere, silk, satin or gabardine. The fronts overlap at the closing. The neck edge is finished with a broad collar. The sleeve is cut in kimono style. The pattern has 4 sizes: 34, 38, 42 and 46 inches bust measure. It requires 6½ yards of 44-inch material for a 34-inch size. A pattern of this illustration mailed to any address on receipt of 10 cents in silver or stamps.

A Practical Model—2013—Ladies' apron dress—This model may serve as a house dress. It is comfortable and easy to develop, easy to wear and easy to launder. Percale, gingham, seersucker, crepe, lawn and alpaca are good for its development. The pattern is cut in 4 sizes: 34, 38, 42 and 46 inches bust measure. It requires 5 yards of 36-inch material for a 34-inch size. A pattern of this illustration

The sleeve may be in wrist or elbow length. The pattern is cut in 4 sizes: 4, 6, 8 and 10 years. It requires 3¾ yards of 36-inch material for a 6-year size. A pattern of this illustration mailed to any address on receipt of 10 cents in silver or stamps.

A Popular Up-to-date Style—2021—Ladies' Sport Blouse, with sleeve in either of two lengths: This style is fine for satin, taffeta, flannel, batiste, lawn, linen and other wash fabrics. The fronts are finished in coat closing. The sleeve is finished at wrist length with a frill; in elbow length, a smart turnback cuff forms a suitable decoration. The pattern is cut in 6 sizes: 34, 36, 38, 40, 42 and 44 inches bust measure. It requires 3½ yards of 36-inch material for a 36-inch size. A pattern of this illustration mailed to any address on receipt of 10 cents in silver or stamps.

A Splendid Style for Business and

Child's dress, with sleeve in either of two styles—Lawn, nainsook, batiste, dimity, “allover” embroidery, cashmere, nuns' veiling, challie, silk and albatross are good materials for this style. The model is made with panel sections in back and front and is lengthened at the sides by gathered skirt portions. The sleeve may be short, with a turnback cuff or finished at wrist length with a band cuff. The pattern is cut in 4 sizes: 2, 3, 4 and 5 years. It requires 2¼ yards of 36-inch material for a 3-year size. A pattern of this illustration mailed to any address on receipt of 10 cents in silver or stamps.

Overblouse Dress for Misses' and Small Women—2014—This model is nice for serge and satin combinations, and good for gabardine and crepe. The overdress may be used to wear with any guimpe or underwaist. Of all simple styles, this one is the simplest to develop, and with its plain and graceful lines is most becoming, especially for slim figures. The pattern is cut in 3 sizes: 16, 18 and 20 years. It requires 2 yards of 36-inch material for the guimpe and 3½ yards for



mailed to any address on receipt of 10 cents in silver or stamps.

A Simple Fashionable Model—1818—Ladies' three-piece skirt—Striped suiting, serge, broadcloth, poplin, taffeta, faille, gabardine and velour are nice for this model. The pocket, which is both jaunty and practical, may be omitted. The pattern is cut in 8 sizes: 22, 24, 26, 28, 30, 32, 34 and 36 inches waist measure. It requires 3¾ yards of 44-inch material for a 24-inch size. The skirt measures about 3 1-3 yards at the foot. A pattern of this illustration mailed to any address on receipt of 10 cents in silver or stamps.

A Neat and Becoming Model in One-Piece Style—2007—Girls' one-piece dress, with sleeve in wrist or elbow length—This style is good for percale, chambray, gingham, serge, gabardine, flannelette, lawn and linen. The closing is at the side. The neck is cut in square outline.

Stop the Cough.—Coughing is caused by irritation in the respiratory passages, and is the effort to dislodge obstructions that come from inflammation of the mucous membrane. Treatment with Dr. Thomas' Electric Oil will allay the inflammation and in consequence the cough will cease. Try it, and you will use no other preparation for a cold.

Home Wear—Waist 2026. Skirt—2025—Separate skirts and waists have lost none of their popularity, and surely no combination is neater, especially for general wear than a neat waist of linen, crepe, or other seasonable material, and a skirt of serge or cloth, linen or taffeta. In the combination here portrayed the waist has the popular yoke extension, below which the fronts are full and gathered. This gives comfort and ease, and is very becoming, especially to slender figures. The sleeve in wrist length has a deep shaped cuff to which a flare section may be added. In elbow length the sleeve has a turnback cuff. The waist pattern 2026 is cut in 7 sizes: 34, 36, 38, 40, 42, 44 and 46 inches bust measure. It requires 3 yards of 36-inch material for a 38-inch size. The skirt pattern 2025 is cut in 7 sizes also: 22, 24, 26, 28, 30, 32 and 34 inches waist measure. It requires 5¾ yards of 36-inch material for a 24-inch size. The skirt measures about 3¼ yards at the foot. The illustration calls for two separate patterns, which will be mailed to any address on receipt of 10 cents for each pattern, in silver or stamps.

A Simple and Pretty Design—2011—

the dress, for a 16-year size. The dress measures about 2½ yards at its lower edge. A pattern of this illustration mailed to any address on receipt of 10 cents in silver or stamps.

It was the Sabbath day, and the elder was shaving himself prior to church time, when he made a slight cut with the razor on the extreme end of his nose. Calling his wife, he asked her if she had any court plaster.

“You will find some in my sewing basket,” she said.

The elder soon had the cut covered. At church, in assisting with the collection, he noticed every one smile as he passed the plate. Very much annoyed, he asked one of his assistants if there was anything wrong with his appearance.

“I should say there was,” answered the assistant. “What is that upon your nose?”

“Court plaster.”

“No,” said his friend; “it is the label from a reel of cotton. It says ‘Warranted 200 yards.’”