

Fashions of To-Day.

The drill jacket when worn open presents a decided military air.

Very short and exceptionally jaunty is a cutaway jacket, which may have either a notched or a Nansen collar.

A deep sailor-collar and revers are smart adjuncts of an Eton blouse-jacket with open fronts.

The Marlborough jacket is one of the belted Eton styles with reversed fronts.

A whole back or one with a center seam may be made in Eton jackets.

The sleeves of Eton jackets may either be gathered or plaited in the arms'-eyes.

The short mantle of other days is recalled in the shawl cape, with circular flounce forming a flute at the center.

A short, triple cape—the four-in-hand—acquires jauntiness from a turn-down military or a flare collar, which finishes it.

Several star-pointed sections and a Lafayette or turn-down collar compose the Stellar cape, a new and fanciful style of top-garment.

The Lady Babbie mantle, a deeply pointed, flowing garment adapted for lace fabrics, is a revival of the once fashionable lace shawl.

Fulness, though not of the blouse order, appears in the fronts of a shirt-waist with a pointed yoke applied on the back.

Groups of tucks are made in a waist with a puffed vest let in between fronts with revers. Lengthwise tucks give the impression of a square front-yoke in another shirt-waist.

A blouse front cut low and in fanciful outline at the center, a yoke formed in a succession of puffs and double epaulettes are the adjuncts which enhance the good style of a basque-waist.

A deep, round yoke and a double Bertha-frill are points of interest in the Tudor waist.

The puffed fronts of a yoke-waist are closed in front, but

the deep, square yoke may close at the center or left side.

The yoke and part of the sleeves are tucked in a new Princess gown, which is also provided with a fanciful double Bertha and a collar and cuffs of corresponding design.

Pointed ornaments turning down from a yoke are among the decorative features of a tea-gown.

An applied yoke and a panel vary a Princess gown.

Two chemisettes, one ending at the bust and the other at the waist-line, for wear with open-fronted waists, may be made either with or without a closing.

Deep, square or round collars suggestive of yokes furnish stylish accessories for Summer gowns.

An elbow or short puff sleeve made with or without a ripple cap may be inserted in an evening bodice.

Either one or two seams are made in a plain, snug-fitting dress sleeve.

An admirable supplement to a low-necked and short-sleeved gown is a puffed guimpe with sleeves also puffed from shoulder to wrist.

Another guimpe is puffed in lengthwise rows both in the sleeves and yoke.

A combination corset-cover and underskirt is a dainty article of underwear.

The upper flounce completing the trio of circular graduated flounces on a three-piece skirt extends to the belt at the back and is strongly suggestive of a drapery.

Among a group of smart bathing costumes is the Trouville with a gored skirt and round sailor-collar, the Ostend with both full skirt and a waist introducing a Bertha frill, the Brighton with kilt-plaited skirt and square sailor-collar and the Newport with box-plaited skirt, a slightly pouched waist and square sailor-collar.

Knickerbockers are included in each of the bathing suits described, though tights may replace them.

Cuffs flaring over the hand replace lace wrist frills.

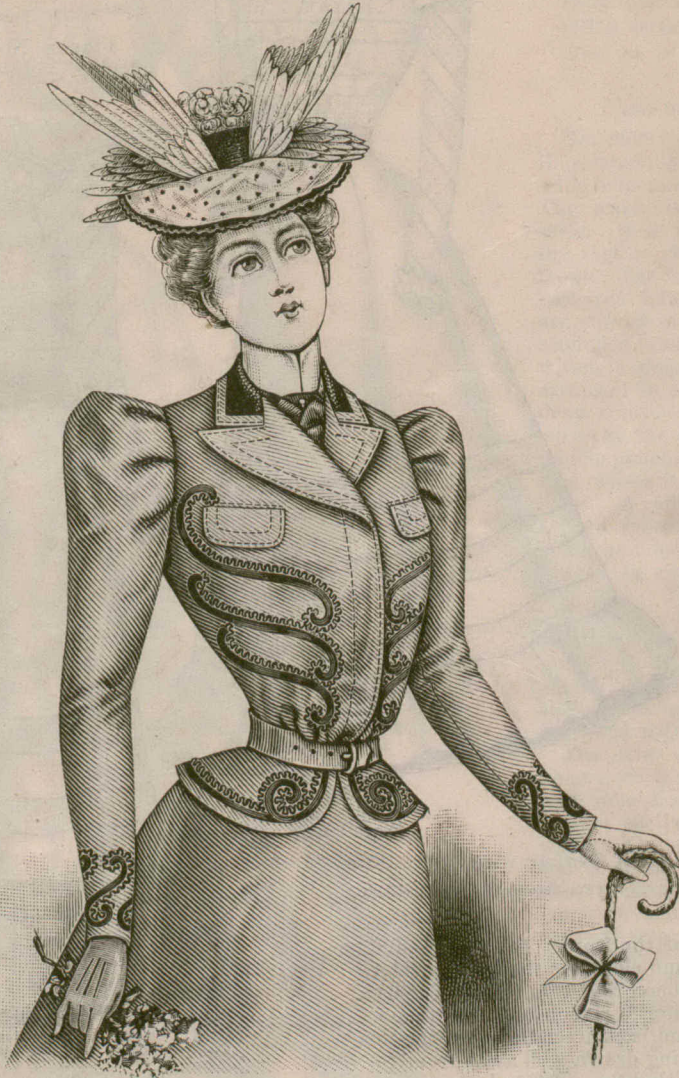


FIGURE NO. 176 G.—This illustrates LADIES' BELTED JACKET.—The pattern is No. 1645, price 10d. or 20 cents.

(For Description see Page 646.)