

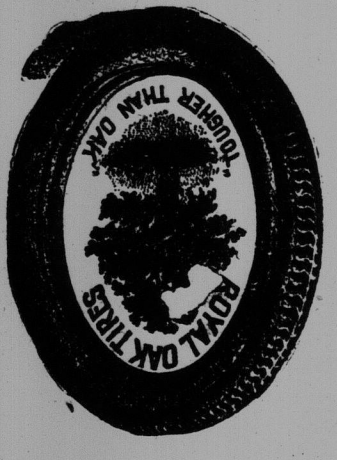
**MC 2035**

THE EVENING TIMES AND STAR, ST. JOHN, N. B., FRIDAY, JUNE 4, 1920

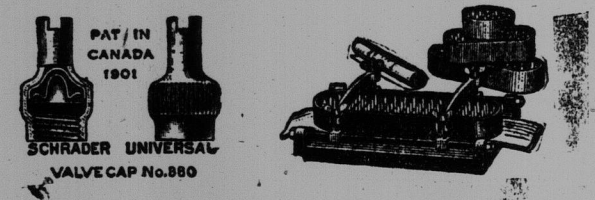
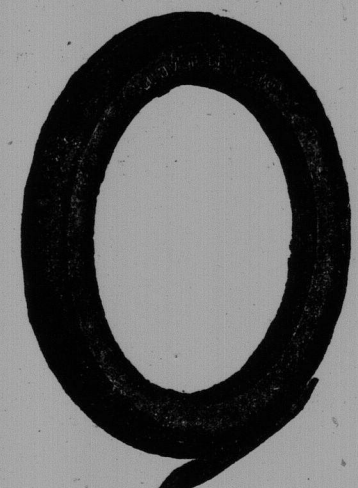
16



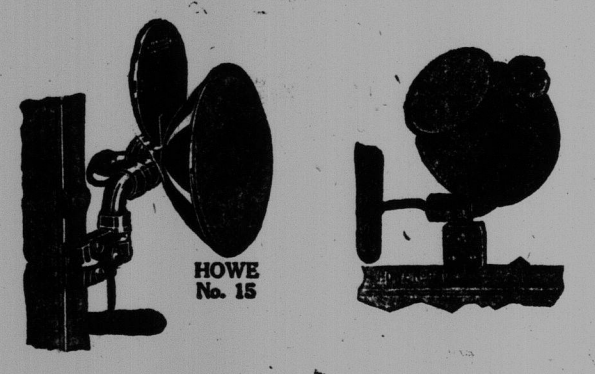
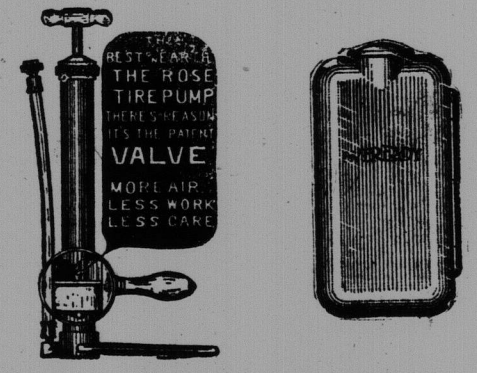
# Motor Car Accessories



Quality, Service and a Large Complete Line of the Latest and Most Approved Automobile Requirements Briefly Describes our Motor Car Accessory Department in Which Your Every Need has been Anticipated, our Displays Embracing

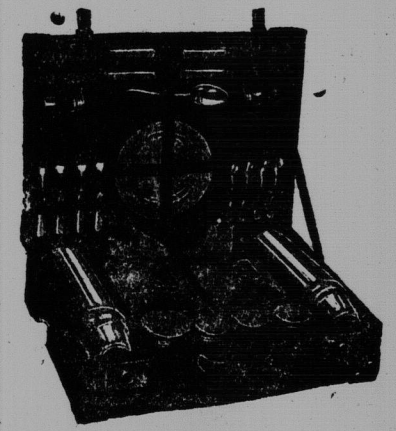
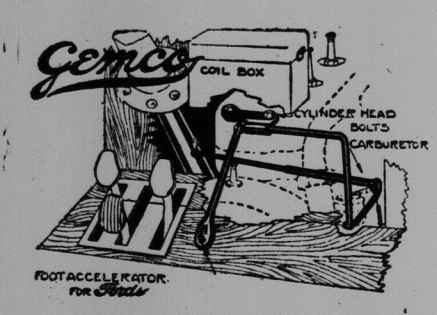
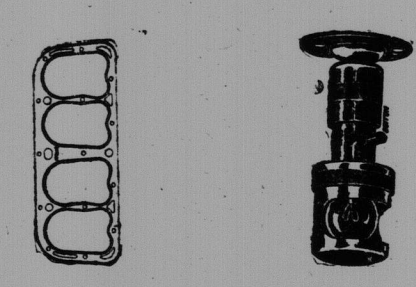
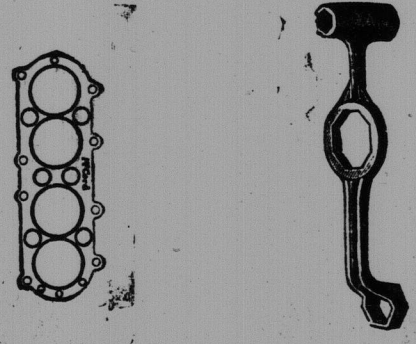
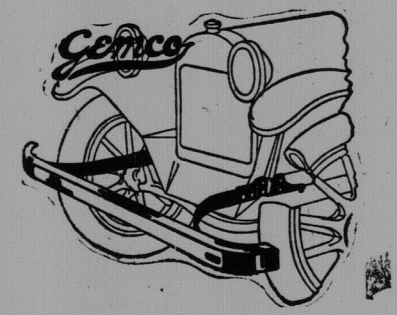


**Royal Oak Tires Clover Leaf Tires**  
(Tougher Than Oak)



**Goodyear Tires**

- Clover Leaf Tires "Non Skids same price as Plain Treads."
- Royal Oak Tires, tougher than oak.
- Royal Grey and Red Inner Tubes.
- Goodyear Fabric and Cords.
- Goodyear Tubes, regular and heavy tourist.
- Dunlop Tires, fabric and cords and Tubes.
- Dreadnought and Imperial Tire Chains.
- Chains for Ford Ton Trucks and Attachments.
- Utility Rim Removers.
- Emergency Mud Hooks.
- Tire Repair and Saver Kits.
- Vulcanizing and Patching Cement.
- Cementless and Cement Patches.
- Tire-Cut Filler and Putty.
- Friction Tape.
- Inside Protection and Rim Cut Patches.
- Outside Blow-out and Hook-on Patches.
- Tire Reliners.
- Johnston's Hastle Patches.
- Adamson Vulcanizers.
- Tire Paint.
- Hand Tire Pumps of all descriptions.
- Auto and Truck Jacks.
- Running Board Mats.
- Auto Clocks.
- Lunch Boxes.
- Hand and Electric Horns.
- Tool Boxes.
- Luggage Carriers.
- Resilient Spring Bumpers.
- Search Lights and Tail Lights.
- Auto Lamps and Lamp Boxes.
- Storage and Dry Cell Battery Testers.
- Champion and Hercules Spark Plugs.
- Champion and Hercules Spark Plug Porcelain.
- Spark Plug Cleaners.
- Grease Guns.
- Auto Soap.
- Sponges.
- Large Assortment of Chamois Skins.
- Radiator Hose.
- Radiator Cement.
- Auto Polishes and Cleaners.
- Johnson's Carbon Remover.
- Johnson's Stop Squeak Oil.
- Glidden Auto Finishes.
- Garco Brake and Transmission Lining.
- Howe Kork Tread Transmission Lining.
- Cotter Pins and Cotter Pin Pullers.
- Bolts, Nuts, Caps, Screws and Taper Pins.
- Wheel Pullers for Ford and Chevrolets.
- Chevrolet and Ford Cylinder Head Gaskets.
- Wire Wheels.
- Large Assortment of Wrench Sets.
- Auto Goggles.
- Ford Speedometers.
- Everready Flash Lights.
- Lubricating Spring Covers.
- Taps and Dies.
- Tire Pressure Gauges.
- Valve Insides.
- Valve Repair Tools.
- Chevrolet Cylinder Head Gaskets and Rimmers, articles for the Motorist.
- Windshield Cleaners.
- Fyrac Spark Plugs.
- Tire Valves and Valve Parts.
- Pump Connections.
- Shaler's Five-Minute Vulcanizers.
- Stanley Adjustable Luggage Carriers.
- Stewart Wire Wheels for Fords, Chevrolets and Overlands.
- Columbia Hot Shot Batteries.
- Dash and Trouble Lamps.
- Cigar and Pipe Lighters.
- Dashboard and Push and Pull Switches.
- Lamp Plugs and Sockets.
- Rubber Running-Board Mats.
- Bearing and Carbon Scrapers.
- Valve Grinders and Refacers.
- Double Seal Piston Rings.
- Wonder-Worker Specialties.
- Burgess Shock Absorbers and Snubbers for Fords.
- A Full Stock of Oils and Grease



*Quality*

*Service*

AUTOMOBILE ACCESSORY DEPARTMENT  
Street Floor—Market Square Store

**W. H. Thorne & Co., Limited**

Store Hours: 8 a.m. to 6 p.m. Open Saturdays Till 10 p.m.